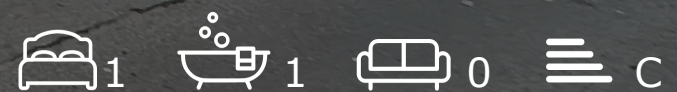
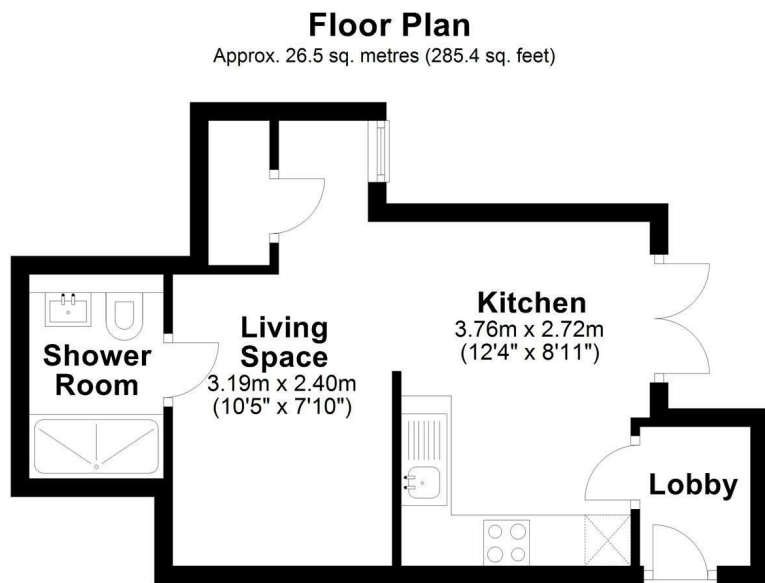




Flat 8, Novum House Water Lane, Cambridge, CB4 1NY
Guide price £235,000



Floor Plan



Total area: approx. 26.5 sq. metres (285.4 sq. feet)

Drawings are for guidance only
Plan produced using PlanUp.



Energy Efficiency Rating		
	Current	Potential
Very energy efficient - lower running costs		
(92 plus) A		
(81-91) B		
(69-80) C		
(55-68) D		
(39-54) E		
(21-38) F		
(1-20) G		
Not energy efficient - higher running costs		
England & Wales	EU Directive 2002/91/EC	

Viewing: Please contact our Gray & Toynbee - Cambridge Office on 01223 439 888 if you wish to arrange a viewing appointment for this property or require further information.

Accommodation

- No chain
- Modern finish
- 4 minute cycle to Cambridge North
- Close to the river

A ground floor studio apartment located in the heart of popular Chesterton, close to the River Cam and just a short journey to the City Centre offered with no onward chain.

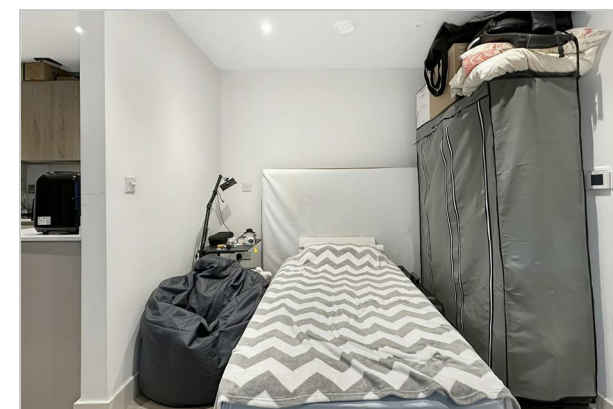
Built in 2018, the property benefits from a secure communal entrance leading into the apartment. The open-plan living area features a fully-fitted kitchen with integrated appliances, including a large fridge freezer, dishwasher, and high-specification oven and hob. Full-length windows provide natural light and open onto the well-maintained communal area. The living space also accommodates space for a double bed.

The bathroom is well-appointed, with a shower unit, heated towel rail, and a large mirrored half wall.

A separate utility/laundry room houses the electrical and heating systems while offering space for a washer-dryer and additional household storage.

The development includes cycle and bin storage, and it's just a 4-minute cycle to Cambridge North train station, with all local amenities within walking distance. The property also benefits from a 10-year developer warranty, valid until 2028.

What3words: ///funded.living.not



Cambridge Office: 154-156 Victoria Road, Cambridge, CB4 3DZ Waterbeach Office: 17 High Street, Waterbeach, CB25 9JU
Tel: 01223 439 888 Email: theteam@grayandtoynbee.com Tel: 01223 949 444 Email: waterbeach@grayandtoynbee.com

These particulars, whilst believed to be accurate are set out as a general outline only for guidance and do not constitute any part of an offer or contract. Intending purchasers should not rely on them as statements of representation of fact, but must satisfy themselves by inspection or otherwise as to their accuracy. No person in this firm's employment has the authority to make or give any representation or warranty in respect of the property.

GRAY TOYNBEE