



Apartment 6, Henslow House, 18 Long Road,
Cambridge, CB2 8PS

Guide price £400,000



6 Henslow House, Long Road, Cambridge.

- Excellent location close to the Hospital
- No chain
- Parking
- EPC rating B

A 2-bedroom apartment of about 700 sq. ft, with parking and no chain, located in a prestigious development within walking distance of Addenbrookes.

This attractive apartment is located on the first floor and is accessed via a large communal reception hall with stairs and a lift.

The well-planned accommodation is extremely efficient and has an energy rating of B. There is a hallway with a large, useful cupboard. The living space is open-plan, with a large bay window and Amtico flooring. The kitchen area is well-equipped with cupboards and worktops as well as appliances including an oven, hob, extractor, fridge freezer, microwave and dishwasher.

The bedrooms are both double rooms, the main room has fitted wardrobes and an en-suite shower room with a WC. The main bathroom has a bath, vanity basin and WC.





The apartment has double glazing, and gas central heating and is in good decorative order.

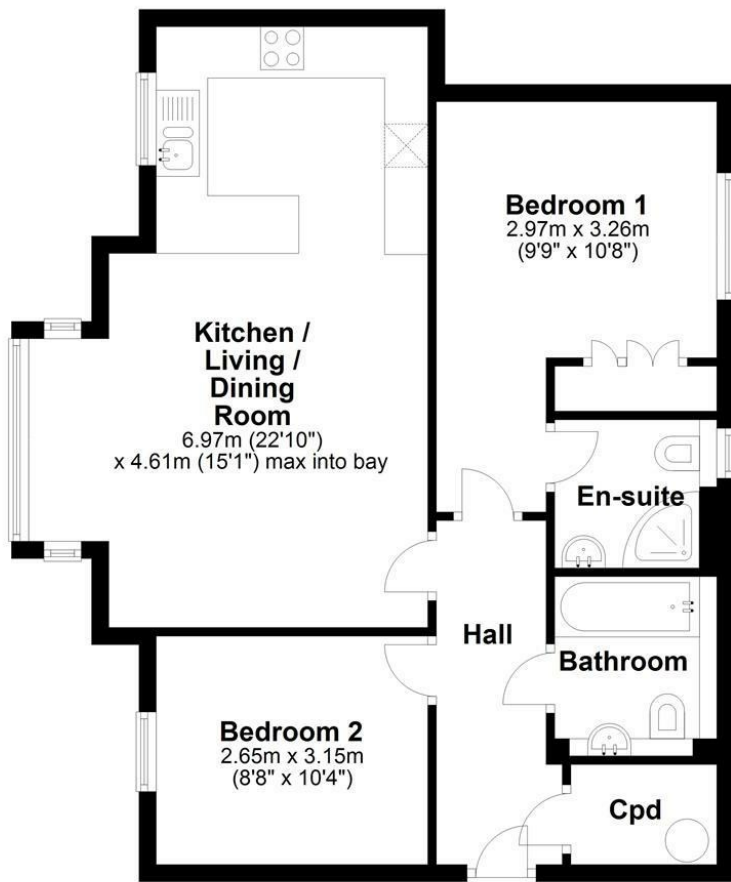
Outside there are well-tended communal grounds, a bike store and allocated parking for one car.

SAT NAV: CB2 8PS. What3words: ///green.fund.keep



Floor Plan

Approx. 64.8 sq. metres (697.1 sq. feet)



Total area: approx. 64.8 sq. metres (697.1 sq. feet)

Drawings are for guidance only
Plan produced using PlanUp.

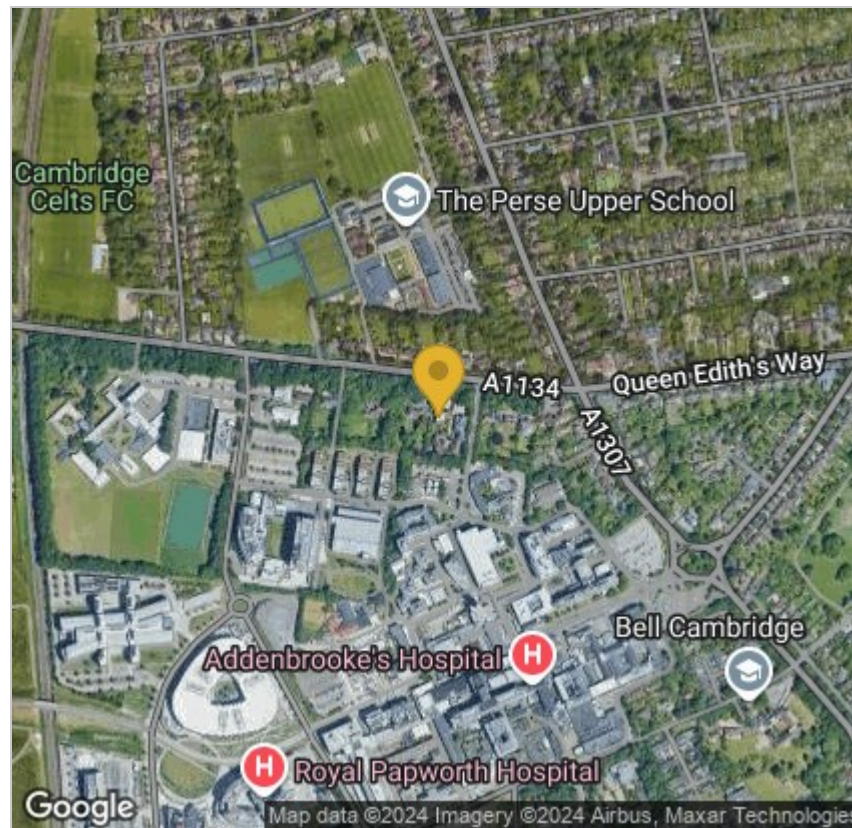
Please contact our Gray & Toynbee - Cambridge Office on 01223 439 888 if you wish to arrange a viewing appointment for this property or require further information.

Tenure: Leasehold with approximately 107 years unexpired. Service charge: £2,647.10.

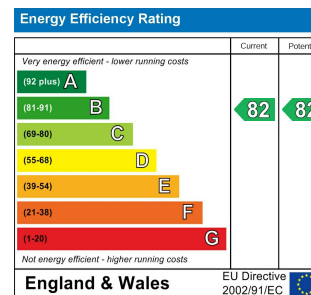
Ground rent: £0

Council tax band: C

Area Map



Energy Efficiency Graph



These particulars, whilst believed to be accurate are set out as a general outline only for guidance and do not constitute any part of an offer or contract. Intending purchasers should not rely on them as statements of representation of fact, but must satisfy themselves by inspection or otherwise as to their accuracy. No person in this firm's employment has the authority to make or give any representation or warranty in respect of the property.

Cambridge Office: 154-156 Victoria Road, Cambridge CB4 3DZ
Tel: 01223 439 888 Email: theteam@grayandtoynbee.com

Waterbeach Office: 17 High Street, Waterbeach, CB25 9JU
Tel: 01223 949 444 Email: waterbeach@grayandtoynbee.com

