



PROPOSED WEST ELEVATION

1/100 @ A1

Description

A rare and interesting opportunity to purchase a mill building with planning permission for conversion to a residential house.

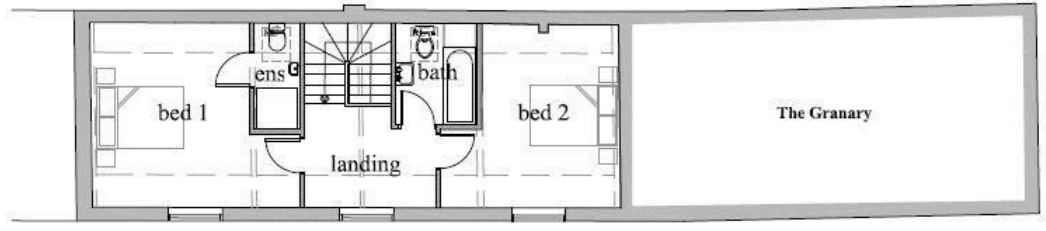
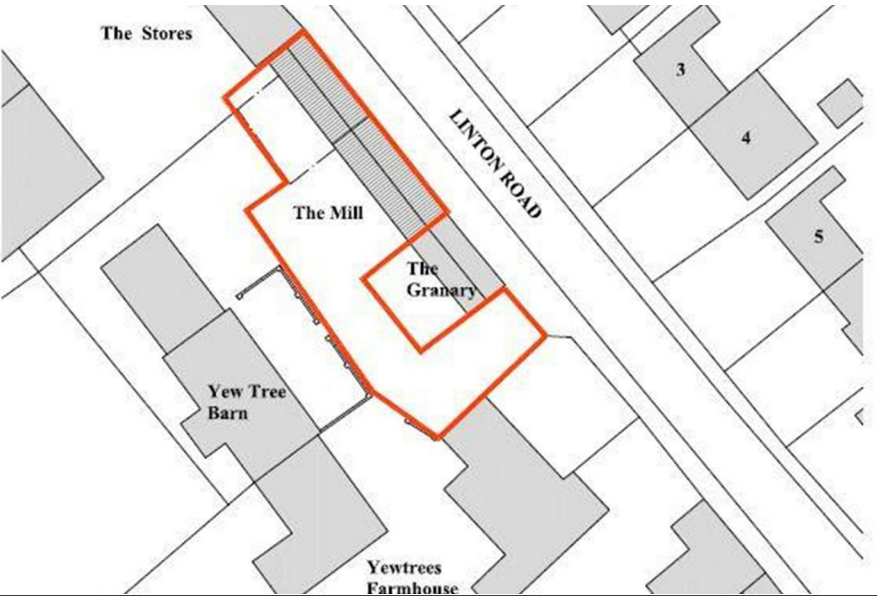
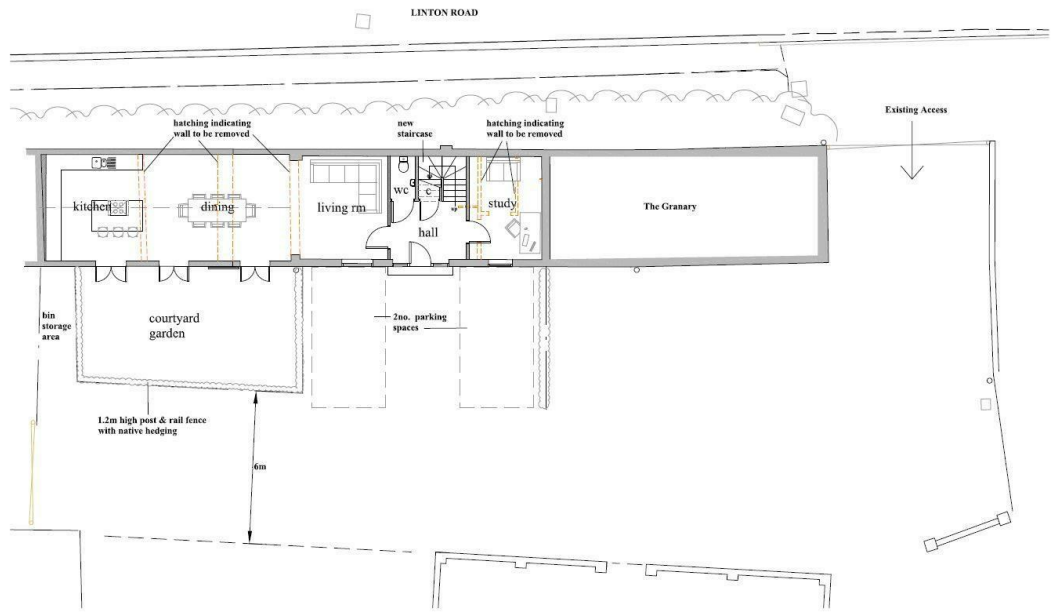
This attractive, red brick barn will have two bedrooms and versatile open-plan living space, plus a study. There will be a courtyard garden and two parking spaces.

Planning permission has been granted by Uttlesford District Council ref: UTT/22/1278/FUL. Purchasers should familiarise themselves with all documents relating to the consent before making an offer, although particular attention is drawn to the requirement of Listed building consent.

Access is via a driveway, shared with the neighbouring properties.

We are advised there is a flying freehold above the adjoining building "The Granary".

The Granary may be available by separate negotiation.



PROPOSED FIRST FLOOR PLAN
1/100 @ A1

Cambridge Office: 154-156 Victoria Road, Cambridge, CB4 3DZ Waterbeach Office: 17 High Street, Waterbeach, CB25 9JU
 Tel: 01223 439 888 Email: theteam@grayandtoynbee.com Tel: 01223 949 444 Email: waterbeach@grayandtoynbee.com



These particulars, whilst believed to be accurate are set out as a general outline only for guidance and do not constitute any part of an offer or contract. Intending purchasers should not rely on them as statements of representation of fact, but must satisfy themselves by inspection or otherwise as to their accuracy. No person in this firms employment has the authority to make or give any representation or warranty in respect of the property.