



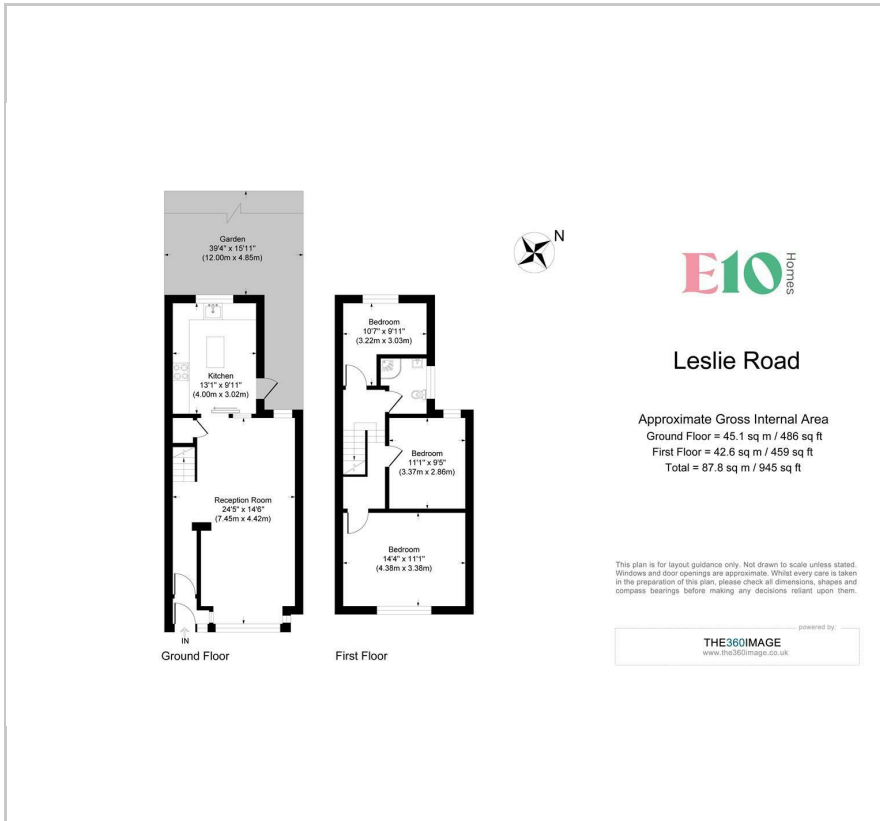
132 Leslie Road

, London, E11 4HG

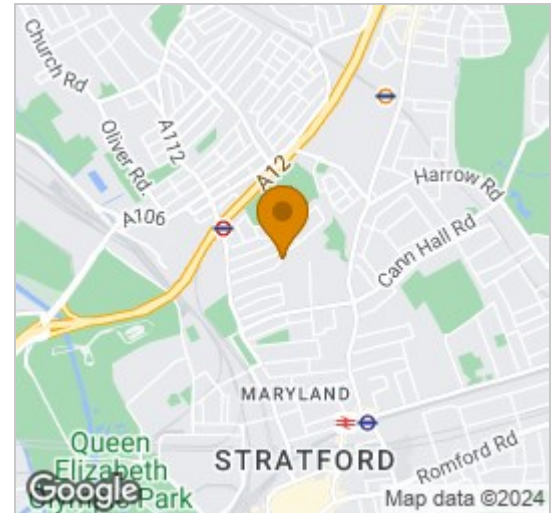
Offers in excess of £550,000



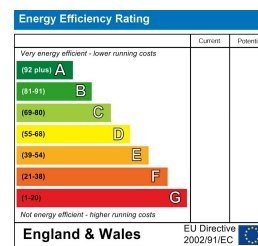
## Floor Plan



## Area Map



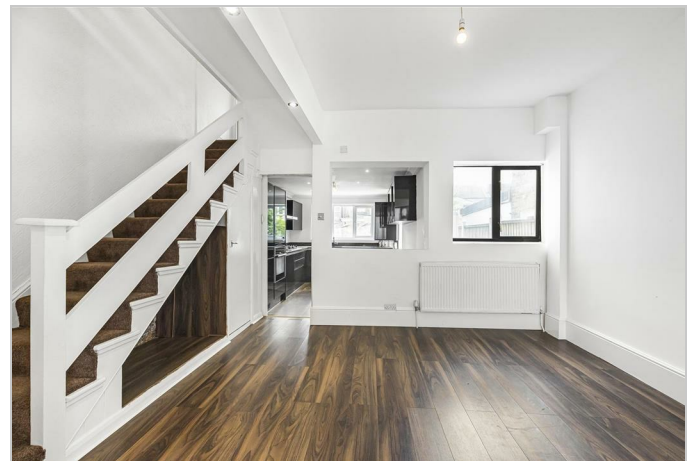
## Energy Efficiency Graph



## Viewing

Please contact our E10 Homes Office on 02081276490 if you wish to arrange a viewing appointment for this property or require further information.

- SMARTLY PRESENTED ■ LARGE REAR GARDEN THROUGHOUT
- SCOPE FOR LOFT ■ 7 MINS TO LEYTON TUBE EXTENSION (STPP)
- CHAIN FREE FOR AN EASY MOVE ■ FOLLOW US ON INSTAGRAM AT E10HOMES\_LEYTON



### Summary

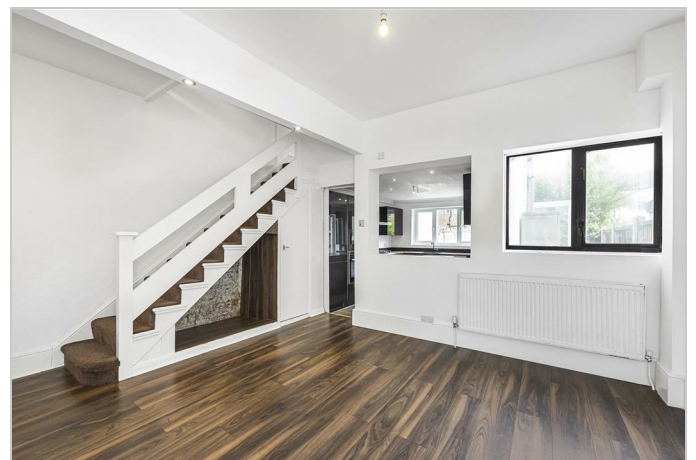
A fantastic three bedroom terrace house, on a quiet turning in Leyton just seven minutes from the station. Freshly refurbished to an immaculately high standard, here you have close to 950 square foot of versatile living space, with another 600 square foot of garden to the rear.

The renovations here are inspired, with some striking decorative choices that immediately draw the eye. The ground floor living space is semi open plan, with so much space for relaxing, entertaining and play. Two of the bedrooms are doubles, and there's the potential to extend into the loft subject to permission.

You're a short walk from Leyton Station, meaning your door to door commute to the City could be well under half an hour. It's five minutes on foot to High Road Leyton where you'll find all your amenities, and you'll be just down the road from bustling Stratford too.

### YOUR NEW HOME

Your front garden gate is in the centre of a low brick wall, your enclosed front yard giving you that extra bit of distance from the street. Take in the yellow London brick frontage of your Victorian terrace, then step into your porch.



These particulars, whilst believed to be accurate are set out as a general outline only for guidance and do not constitute any part of an offer or contract. Intending purchasers should not rely on them as statements of representation of fact, but must satisfy themselves by inspection or otherwise as to their accuracy. No person in this firm's employment has the authority to make or give any representation or warranty in respect of the property.

226 Francis Road, Leyton, E10 6NQ

Tel: 02081276490 Email: [info@e10homes.co.uk](mailto:info@e10homes.co.uk) <https://www.e10homes.co.uk>