



67 Thornhill Road

, London, E10 5LL

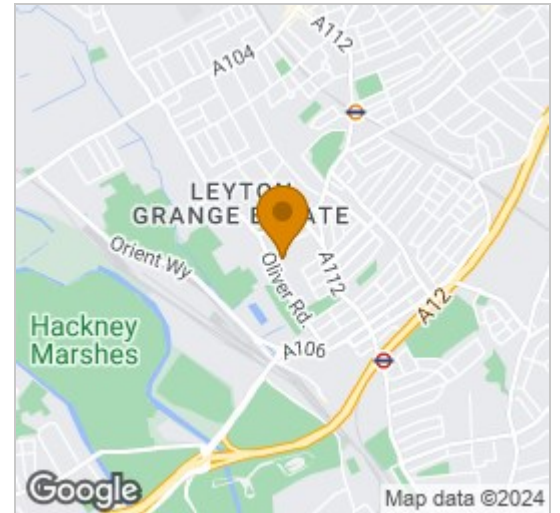
Offers in excess of £700,000



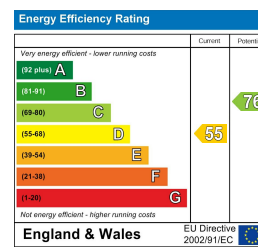
Floor Plan



Area Map



Energy Efficiency Graph



Viewing

Please contact our E10 Homes Office on 02081276490 if you wish to arrange a viewing appointment for this property or require further information.

- BRIGHT & SMARTLY FINISHED
- DEVELOPMENT POTENTIAL
- 15 MINS TO LEYTON TUBE
- SIDE RETURN CONSERVATORY
- LARGE REAR GARDEN
- FOLLOW US ON INSTAGRAM AT E10HOMES_LEYTON



A naturally bright and stylish three bedroom family terrace, complete with side return conservatory and potential for further development. There's a large garden to the rear, with more greenery on your doorstep. Leyton Jubilee Park is just half a mile on foot.

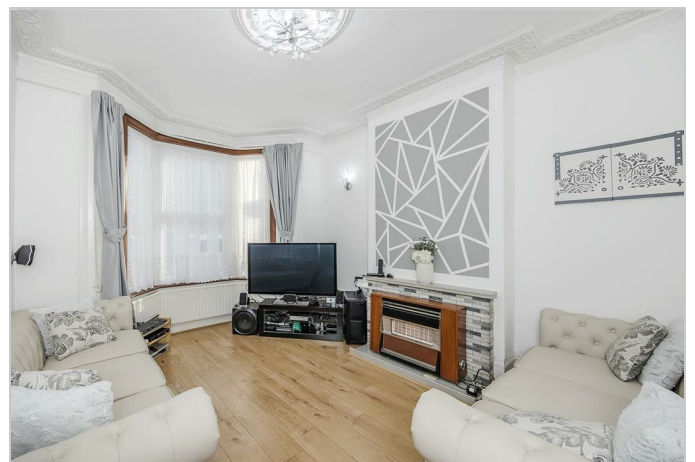
Move-in ready, you've still got a wealth of potential here ñ not only do you have an existing party wall agreement to evolve your covered side return into a fully open plan ground floor, you also have a large cellar and scope for a loft conversion, as other properties on your street have done (STPP).

The elegantly landscaped greenery of Coronation Gardens is just five minutes away, and the perfect spot for keen runners, or just to stroll around the lawns. Leyton High Road, with its range of bars, shops, cafes and other amenities, is just as close.

YOUR NEW HOME

Totalling more than 1700 square feet behind your classic Victorian frontage, your front reception is your first stop ñ handsomely finished with blonde hardwood underfoot, pristine white walls and a feature fireplace.

Next door you have reception two, similarly styled and currently in use as a fourth bedroom. Connecting these two spaces for a generous through lounge could definitely be on your to-do list.



These particulars, whilst believed to be accurate are set out as a general outline only for guidance and do not constitute any part of an offer or contract. Intending purchasers should not rely on them as statements of representation of fact, but must satisfy themselves by inspection or otherwise as to their accuracy. No person in this firm's employment has the authority to make or give any representation or warranty in respect of the property.

226 Francis Road, Leyton, E10 6NQ
 Tel: 02081276490 Email: info@e10homes.co.uk <https://www.e10homes.co.uk>