

29 Railway Street, Glossop, Derbyshire, SK13 2AA



- 1890s Stone Mid Terrace
- Entrance Porch
- Two Bedrooms
- Kitchen/Diner
- Garden to Rear
- Near to Local Shops & Amenities
- Close to Schools & Nurseries
- Hadfield Village Location
- Convenient Location to the Railway Station
- Countryside Walks Nearby

29 Railway Street, Glossop, Derbyshire, SK13 2AA

MAIN DESCRIPTION

This charming mid-terrace home offers comfortable living space throughout, making it an ideal choice for first-time buyers, small families, or those seeking a cosy, conveniently located property. The entrance porch leads into a welcoming lounge through to the kitchen/diner area with an external door providing access to the rear garden. Upstairs from the landing there are two bedrooms and the family bathroom.

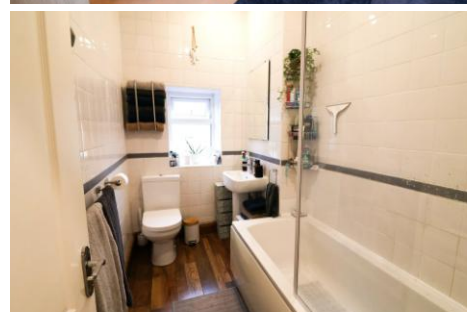
The home benefits from practical features throughout, including gas central heating, UPVC double glazing, and a well-balanced mix of living and storage space. With its inviting layout, outdoor areas, and convenient location near local amenities and transport links, this property offers excellent value and strong appeal for a wide range of buyers.

Hadfield is a charming and well-connected village located in the High Peak district of Derbyshire, just a stone's throw from the edge of the Peak District National Park. Best known as the filming location for the popular TV series *The League of Gentlemen*, Hadfield combines characterful charm with everyday convenience.

The village offers a range of local amenities including independent shops, cafés, pubs, schools, and parks, making it a popular choice for families, first-time buyers, and commuters. Hadfield train station provides direct services to Manchester Piccadilly, offering excellent connectivity for those working in the city.

Surrounded by beautiful countryside, including nearby Bottoms and Valehouse Reservoirs, Hadfield is perfect for those who enjoy walking, cycling, and outdoor activities while still wanting to stay close to urban centers like Glossop and Manchester.

With its welcoming community, scenic setting, and great transport links, Hadfield strikes an ideal balance between rural living and modern convenience.



29 Railway Street, Glossop, Derbyshire, SK13 2AA

ENTRANCE PORCH

5' 0" x 3' 3" (1.52m x 0.99m) uPVC double glazed door and side window with timber half-glazed internal door leading into the lounge.

LOUNGE

12' 6" x 12' 6" (3.81m x 3.81m) A well-proportioned lounge featuring a large chimney breast with an open recess, uPVC double-glazed window to the front elevation, TV and internet points, wall mounted radiator, ceiling light point, access from the lounge to the kitchen and staircase leading to the first floor accommodation.



KITCHEN/DINER

12' 5" x 11' 2" (3.78m x 3.4m) A generous size kitchen/diner fitted with a mix of high and low-level units with contrasting worktops and splashback tiling, four ring gas hob with overhead extractor and double oven, space for under-counter fridge and separate freezer, space and plumbing for under-counter washing machine. Stainless steel sink with draining board and mixer tap, wall mounted radiator and uPVC double-glazed window to the rear elevation with rear garden aspect. A solid timber external door provides access to the rear garden.

LANDING

Ceiling light point, loft access and doors to first floor accommodation.

MAIN BEDROOM

12' 5" x 9' 5" (3.78m x 2.87m) A generous size double bedroom with uPVC double-glazed window to the front elevation, wall mounted radiator and ceiling light point.

BEDROOM TWO

11' 2" x 7' 7" (3.4m x 2.31m) uPVC double-glazed window to the rear elevation, wall mounted radiator and ceiling light point.

29 Railway Street, Glossop, Derbyshire, SK13 2AA

BATHROOM

8' 9" x 4' 8" (2.67m x 1.42m) Fitted with a three-piece suite comprising a bath with overhead shower, low-level WC, and pedestal wash basin, floor to ceiling tiling, spotlights to ceiling, uPVC double-glazed window to the rear elevation.

EXTERNALLY

To the front of the property is a low maintenance gravel garden with gated access. To the rear of the property a raised timber decking area ideal for relaxing and dining.

DISCLAIMER

The vendor has advised the following:

Property Tenure - Leasehold

Annual Ground Rent - £1.49

Leasehold Term - 999 years - 869 years remaining

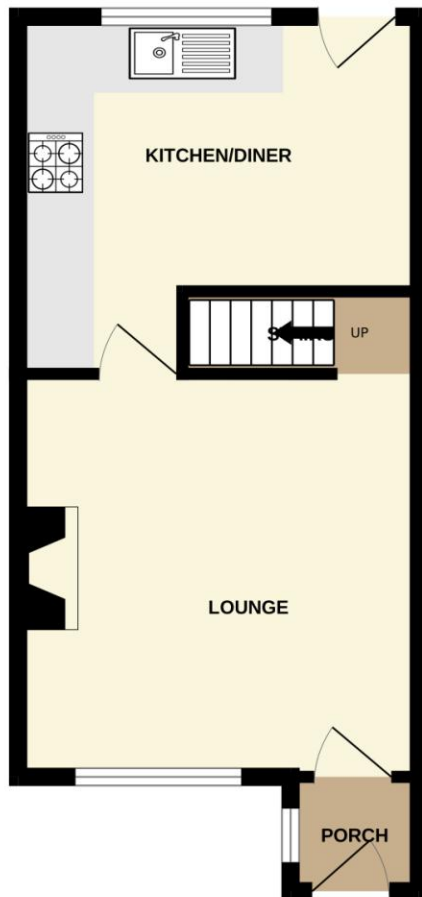
EPC Rate - D

Council Tax Band Rating - A

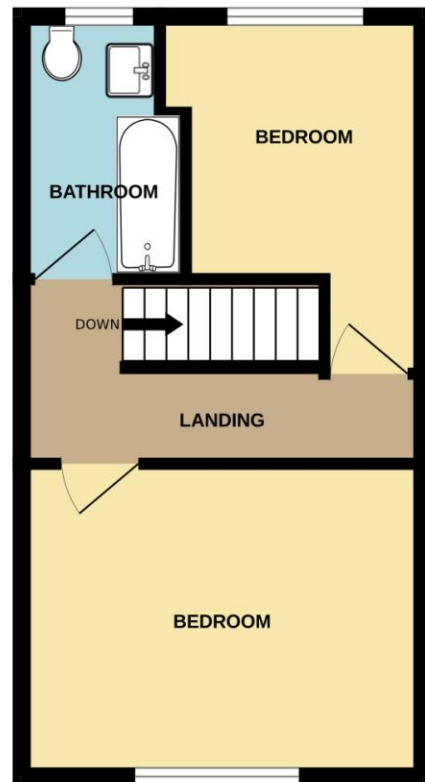
Council - High Peak Borough Council

29 Railway Street, Glossop, Derbyshire, SK13 2AA

GROUND FLOOR



1ST FLOOR



Whilst every attempt has been made to ensure the accuracy of the floorplan contained here, measurements of doors, windows, rooms and any other items are approximate and no responsibility is taken for any error, omission or mis-statement. This plan is for illustrative purposes only and should be used as such by any prospective purchaser. The services, systems and appliances shown have not been tested and no guarantee as to their operability or efficiency can be given.
Made with Metropix ©2025

Agents Disclaimer: Stepping Stones Asset Management Ltd, their clients and employees 1: Are not authorised to make or give any representations or warranties in relation to the property either here or elsewhere, either on their own behalf or on behalf of their client or otherwise. They assume no responsibility for any statement that may be made in these particulars. These particulars do not form part of any offer or contract and must not be relied upon as statements or representations of fact. 2: Any areas, measurements or distances are approximate. The text, photographs and plans are for guidance only and are not necessarily comprehensive. It should not be assumed that the property has all necessary planning, building regulation or other consents and Stepping Stones Asset Management Ltd have not tested any services, equipment or facilities. Purchasers must make further investigations and inspections before entering into any agreement.

Purchaser information -The Money Laundering, Terrorist Financing and Transfer of Funds(Information on the Payer) Regulations 2017(MLR 2017) came into force on 26 June 2017. Stepping Stones Asset Management Ltd require any successful purchasers proceeding with a property to provide two forms of identification i.e. passport or photocard driving license and a recent utility bill or bank statement. We are also required to obtain proof of funds and provide evidence of where the funds originated from. This evidence will be required prior to Stepping Stones Asset Management removing a property from the market and instructing solicitors for your purchase.

Third Party Referral Arrangements - Stepping Stones Asset Management may have established professional relationships with third-party suppliers for the provision of services to Clients. As remuneration for this professional relationship, the agent may receive referral commission from the third-party companies. Details are available upon request.