

8 Longclough Drive, Glossop, Derbyshire, SK13 8HN



- FREEHOLD & NO VENDOR CHAIN
- Semi Detached Family Home
- Set back from the road, cul-de-sac
- Three Bedrooms
- Entrance Porch & Hallway
- Spacious Lounge
- Kitchen/Diner
- Front & Rear Gardens
- Garage for secure parking
- Close to Glossop Town Centre

8 Longclough Drive, Glossop, Derbyshire, SK13 8HN

MAIN DESCRIPTION

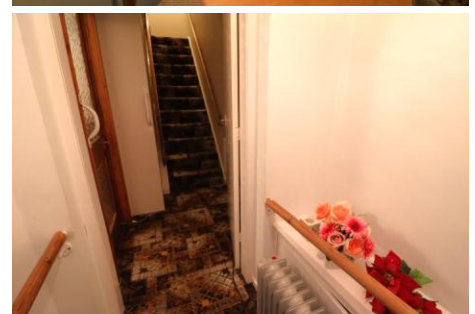
FREEHOLD & NO VENDOR CHAIN

An exceptional opportunity to acquire a semi-detached, freehold home set within a cul-de-sac position offered with no vendor chain, perfect for those looking to create a wonderful and comfortable family home.

Set back from the road, the property enjoys a pleasant wildflower garden outlook to the front, bursting with colour throughout spring, summer, and autumn, and a private graveled forecourt, to the rear is a private low maintenance garden providing a safe and enjoyable space for children, pets, or outdoor entertaining. Additionally, the property benefits from a garage located a short distance from the home, adding convenience and secure parking.

Inside, the home offers a welcoming porch, a spacious lounge with versatile reception space, and a bright, airy kitchen diner designed to be the heart of the home. Upstairs, there are three well-proportioned bedrooms, alongside a modern shower room, providing ample space for family life or guests.

This lovely property is offering a rare opportunity to secure a home that's ready to be transformed into your perfect family residence.



8 Longclough Drive, Glossop, Derbyshire, SK13 8HN

ENTRANCE PORCH

4' 1" x 3' 8" (1.24m x 1.12m) uPVC double-glazed entrance door, ceiling light point, uPVC double-glazed window to the side elevation, meter cupboards and internal door leading through to the hallway.

HALLWAY

Accessed from the porch, with stairs rising to the first-floor accommodation and an internal timber glazed door leading to the lounge.

LOUNGE

13' 5" x 12' 9" (4.09m x 3.89m) A generous-sized room with a uPVC double-glazed window to the front elevation, ceiling light point, under-stairs storage cupboard and sliding doors opening into kitchen/diner.

KITCHEN/DINER

16' 1" x 10' 2" (4.9m x 3.1m) A spacious area fitted with a range of high- and low-level kitchen units with contrasting work surfaces and tiled splash backs. Includes a stainless steel sink and drainer with mixer tap, boiler housing, plumbing for an automatic washing machine, space for an under-counter fridge, a four-ring ceramic hob with extractor fan above, two uPVC double-glazed windows to the rear elevation and a uPVC double-glazed external door to the rear, along with a wall-mounted radiator.

LANDING

Stairs from the ground floor, loft access point, ceiling light point and internal doors leading to the first-floor accommodation.

MAIN BEDROOM

11' 8" x 9' 2" (3.56m x 2.79m) A generous double bedroom with a uPVC double-glazed window to the front elevation, wall-mounted radiator and ceiling light point.



8 Longclough Drive, Glossop, Derbyshire, SK13 8HN

BEDROOM TWO

12' 0" x 8' 9" (3.66m x 2.67m) Another spacious bedroom with a uPVC double-glazed window to the rear elevation, wall-mounted radiator and ceiling light point.

BEDROOM THREE

7' 6" x 6' 2" (2.29m x 1.88m) uPVC double-glazed window to the front elevation, wall-mounted radiator and ceiling light point.

SHOWER ROOM

8' 2" x 6' 5" (2.49m x 1.96m) Fitted with a three-piece suite comprising a low-level WC, sink cabinet unit and shower. Splash back tiling, uPVC double-glazed window to the rear elevation and a wall-mounted chrome heated towel rail x 2

GARAGE

Single garage with up and over vehicular access door.

EXTERNAL

Set back from the road, the property enjoys a pleasant wildflower garden outlook to the front, bursting with color throughout spring, summer, and autumn, and a private graveled forecourt, to the rear is a private low maintenance garden providing a safe and enjoyable space for children, pets, or outdoor entertaining. Additionally, the property benefits from a garage located a short distance from the home, adding convenience and secure parking.

DISCLAIMER

The vendor has advised the following:

Property Tenure - Freehold

EPC Rate - D

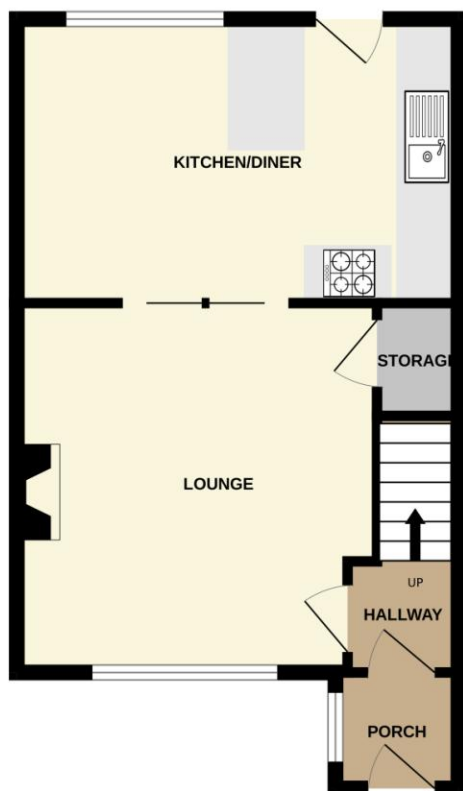
Council Tax Band Rating - B

Council - High Peak Borough Council

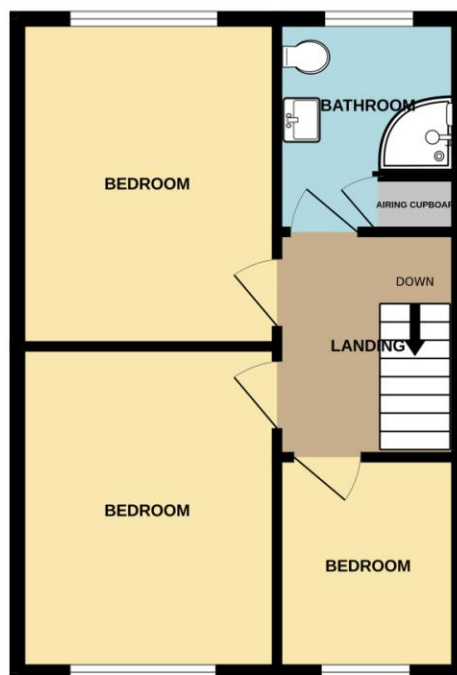


8 Longclough Drive, Glossop, Derbyshire, SK13 8HN

GROUND FLOOR
419 sq.ft. (39.0 sq.m.) approx.



1ST FLOOR
404 sq.ft. (37.6 sq.m.) approx.



TOTAL FLOOR AREA : 824 sq.ft. (76.5 sq.m.) approx.

Whilst every attempt has been made to ensure the accuracy of the floorplan contained here, measurements of doors, windows, rooms and any other items are approximate and no responsibility is taken for any error, omission or mis-statement. This plan is for illustrative purposes only and should be used as such by any prospective purchaser. The services, systems and appliances shown have not been tested and no guarantee as to their operability or efficiency can be given.
Made with Metropix ©2025

Agents Disclaimer: Stepping Stones Asset Management Ltd, their clients and employees 1: Are not authorised to make or give any representations or warranties in relation to the property either here or elsewhere, either on their own behalf or on behalf of their client or otherwise. They assume no responsibility for any statement that may be made in these particulars. These particulars do not form part of any offer or contract and must not be relied upon as statements or representations of fact. 2: Any areas, measurements or distances are approximate. The text, photographs and plans are for guidance only and are not necessarily comprehensive. It should not be assumed that the property has all necessary planning, building regulation or other consents and Stepping Stones Asset Management Ltd have not tested any services, equipment or facilities. Purchasers must make further investigations and inspections before entering into any agreement.

Purchaser information -The Money Laundering, Terrorist Financing and Transfer of Funds(Information on the Payer) Regulations 2017(MLR 2017) came into force on 26 June 2017. Stepping Stones Asset Management Ltd require any successful purchasers proceeding with a property to provide two forms of identification i.e. passport or photocard driving license and a recent utility bill or bank statement. We are also required to obtain proof of funds and provide evidence of where the funds originated from. This evidence will be required prior to Stepping Stones Asset Management removing a property from the market and instructing solicitors for your purchase.

Third Party Referral Arrangements - Stepping Stones Asset Management may have established professional relationships with third-party suppliers for the provision of services to Clients. As remuneration for this professional relationship, the agent may receive referral commission from the third-party companies. Details are available upon request.