

21 Queen Street, Hadfield, Glossop, Derbyshire, SK13 2DW



- **FREEHOLD & NO VENDOR CHAIN**
- **End Stone Terrace**
- **Lounge**
- **True Kitchen/Diner**
- **Two Double Bedrooms**
- **Family Bathroom**
- **Some Refurbishment Required**
- **Forecourt Walled Garden**
- **Private Rear Garden**
- **Close to Park, Railway & Hadfield Village**

21 Queen Street, Hadfield, Glossop, Derbyshire, SK13 2DW

MAIN DESCRIPTION

*****FREEHOLD & NO VENDOR CHAIN*****

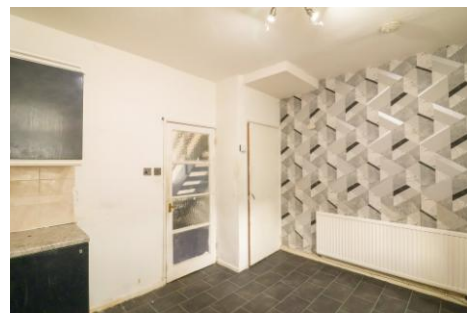
Stepping Stones are delighted to offer for sale this spacious Garden fronted Stone End Terrace property with refurbishment opportunity situated within a desirable location in Hadfield.

Hadfield is a small village just outside its larger neighboring town of Glossop and benefits from host of local shopping and leisure facilities along with a direct rail link into Manchester City Centre. The Longdendale Trail and Bottoms Reservoir are close by for those who enjoy the outdoors.

The Internal accommodation benefits from generous room sizes and high ceilings and in brief comprises; Entrance Vestibule, Spacious Lounge and true Kitchen/Diner to the ground floor, large double bedroom and smaller second double and family bathroom to the first floor.

Externally there is a walled and gated forecourt garden and to the rear is a private rear low maintenance garden with shed and gated side access.

The property would be ideal for the first time buyer, vendors looking to downsize or buy to let investors given its close proximity to Schools, Shops, Train and Bus Links and Park.



21 Queen Street, Hadfield, Glossop, Derbyshire, SK13 2DW

ENTRANCE VESTIBULE

uPVC double glazed external door to vestibule with internal timber and glazed door to lounge.

LOUNGE

14' 0" x 12' 5" (4.27m x 3.78m) A generous sized lounge with feature fireplace, 2 x wall light points, ceiling light point, TV aerial point, cupboard with consumer unit, stairs to the first-floor accommodation, wall mounted radiator, internal door to kitchen diner.

KITCHEN/DINER

12' 5" x 11' 1" (3.78m x 3.38m) A range of high and low fitted kitchen units with contrasting worksurfaces and splashback tiling, wall mounted Baxi combination boiler, integrated electric oven, four ring gas hob with over hob extractor fan, stainless steel sink and drainer unit with mixer tap, plumbing for automatic washing machine, uPVC double glazed stable door providing access to rear garden, cloak cupboard, uPVC double glazed window to the rear elevation.

LANDING

Stairs from the ground to the first floor, internal doors to the first-floor accommodation, loft access point to a part boarded loft with light point.

BEDROOM ONE

14' 0" x 12' 6" (4.27m x 3.81m) A generous double bedroom with uPVC double glazed window to the front elevation, wall mounted radiator x 3 ceiling light point, storage cupboard.

BEDROOM TWO

11' 0" x 7' 8" (3.35m x 2.34m) uPVC double glazed window to the rear elevation with garden aspect, wall mounted radiator x2, ceiling light point.

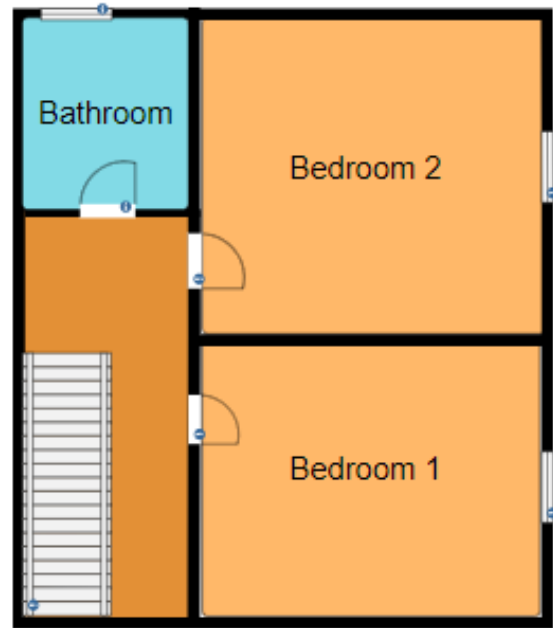
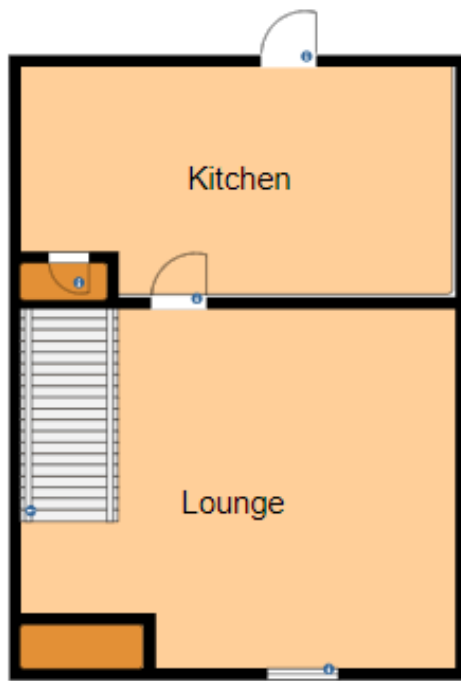
FAMILY BATHROOM

A three-piece suite comprising; low level w/c, pedestal sink unit and bath.

EXTERNAL

Externally there is a walled and gated forecourt garden and to the rear is a private rear low maintenance garden with shed and gated side access.





Whilst every effort has been made to ensure the accuracy of our particulars, the content shall not form a legally binding contract. Neither Stepping Stones, nor the vendor or lessor accepts any responsibility in respect of any errors which may occur accidentally, nor is such information intended to be a statement or representation of fact. Any prospective purchaser or lessee must conduct their own inspection to satisfy themselves as to the accuracy of each statement contained within our property descriptions. In the event floorplans are provided within particulars, it should be noted they are for illustrative purposes only and not necessarily to scale.

FREEHOLD/LEASEHOLD

Stepping Stones have no access to documentation which confirms the tenure of the property.
Should you proceed with the purchase of this property these details must be verified by your Solicitor.

Stepping Stones Asset Management Limited, 18 High Street East, Glossop, SK13 8DA, 01457 858955.
Company Registration Number 10234493. VAT Registration Number 289737140.