



CLEMENTS
HABBA

For Sale

Hauteville Court Gardens, Chiswick, London

£950,000

Leasehold - Share of Freehold







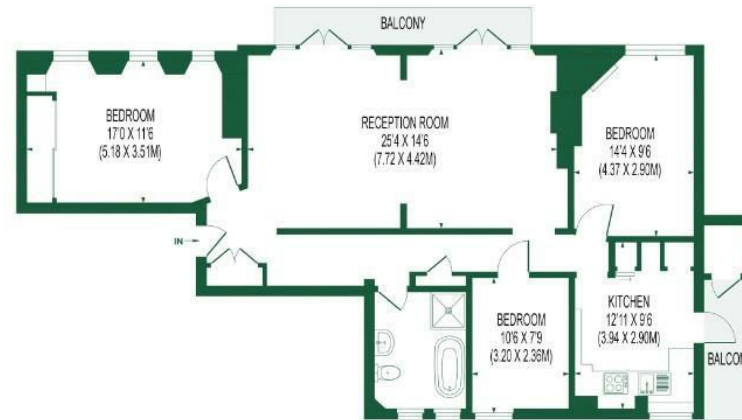
Summary Description

A stunning and spacious, fully refurbished three-bedroom apartment with share of freehold in a well-maintained West London Mansion Block. Chain Free.

- Three Bedroom Mansion Flat
- Two Balconies
- Immaculate Condition
- 978 years remaining on the lease)
- Share Of Freehold
- Additional Communal Gardens
- No Chain
- EPC Rating C

HAUTEVILLE COURT GARDENS

APPROX. GIA 1127 SQ.FT/104.7 SQ.M (INCL. STORE)



SECOND FLOOR

FOR ILLUSTRATION PURPOSES ONLY

THIS FLOOR PLAN SHOULD BE USED AS A GENERAL OUTLINE FOR GUIDANCE ONLY AND DOES NOT CONSTITUTE IN WHOLE OR IN PART AN OFFER OR CONTRACT. ANY INTENDING PURCHASER OR LESSEE SHOULD SATISFY THEMSELVES BY INSPECTION, SEARCHES, ENQUIRIES AND FULL SURVEY AS TO THE CORRECTNESS OF EACH STATEMENT. ANY AREAS, MEASUREMENTS OR DISTANCES QUOTED ARE APPROXIMATE AND SHOULD NOT BE USED TO VALUE A PROPERTY OR BE THE BASIS OF ANY SALE OR LET.



CLEMENTS
HABBA



CLEMENTS
HABBA

Clements Habba Ltd.
Building 3, Chiswick Park, 566 Chiswick High Rd,
Chiswick, London W4 5YA