



CLEMENTS
HABBA

For Sale

Shire Place, London

£595,000

Freehold

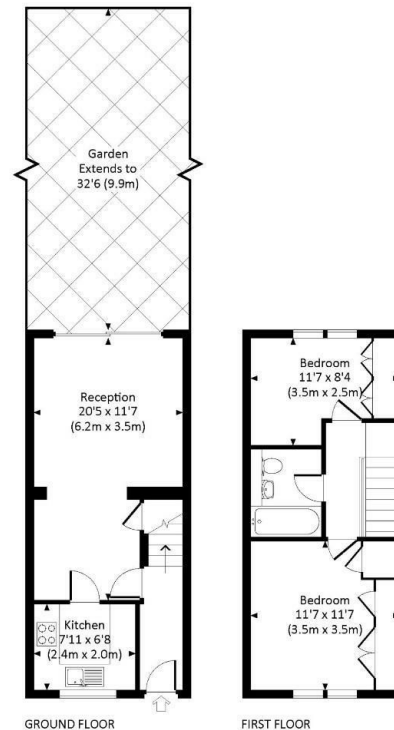


- Two Bedroom Freehold House
- Large Private Garden
- Off Street Car Parking
- Gated Development
- Potential To Extend STPP
- No Chain
- Circa £600pa estate charge

THE PROPERTY

Set within a peaceful mews between Wandsworth and Earlsfield, this well-located freehold house is offered with no onward chain, off-street parking and a 33-foot private garden.

SHIRE PLACE, SW18
Approx. gross internal area
636 Sq Ft. / 59.1 Sq M.



All measurements have been made in accordance with RICS Code of Measuring Practice which are approximate only and only for illustrative purposes. For the avoidance of doubt, the drawings and floor plan shall not be liable for any reliance on these measurements. © 2023 www.downingm.com 020 7430 9033