



CLEMENTS
HABBA

For Sale

Cornwall Grove, Chiswick, London

£1,395,000

Freehold







Summary Description

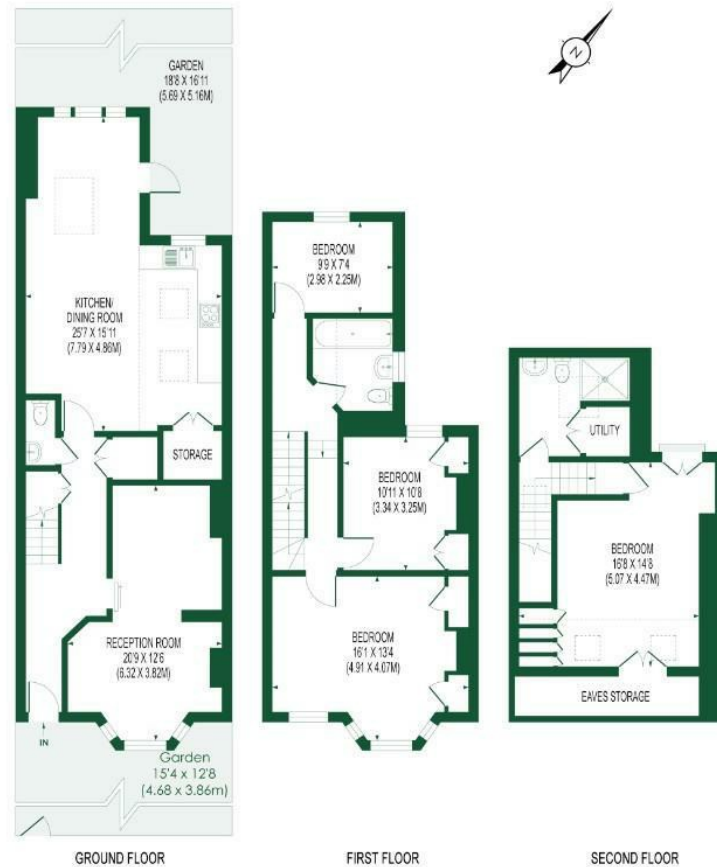
This delightful period property has been thoughtfully extended into a superb family home. Situated on the ever popular Cornwall Grove just moments from the Park, Chiswick High Road and the River Thames.

- Four Bedroom Period Freehold Family Home
- Large Kitchen With Dining Area
- Private Garden
- Working Fireplace
- Moments Chiswick From Chiswick High Road & The River Thames
- Bay Fronted Reception Room
- Two Bathrooms
- Newly Renovated
- Excellent Local Schools
- EPC Rating D

CORNWALL GROVE

APPROX. GIA (INCL. EAVES STORAGE): 1662 SQ. FT/154.40 SQ.M

APPROX. GIA (EXCL. EAVES STORAGE): 1614 SQ. FT/149.94 SQ.M



FOR ILLUSTRATION PURPOSES ONLY
THIS FLOOR PLAN SHOULD BE USED AS A GENERAL OUTLINE FOR GUIDANCE ONLY AND DOES NOT CONSTITUTE IN WHOLE OR IN PART AN OFFER OR CONTRACT.
ANY INTENDING PURCHASER OR LESSEE SHOULD SATISFY THEMSELVES BY INSPECTION, SEARCHES, ENQUIRIES AND FULL SURVEY AS TO THE CORRECTNESS OF EACH STATEMENT.
ANY AREAS, MEASUREMENTS OR DISTANCES QUOTED ARE APPROXIMATE AND SHOULD NOT BE USED TO VALUE A PROPERTY OR BE THE BASIS OF ANY SALE OR LET.

**CLEMENTS
HABBA**