



CLEMENTS
HABBA

For Sale

Chiswick High Road, Chiswick, London

£775,000

Leasehold - Share of Freehold



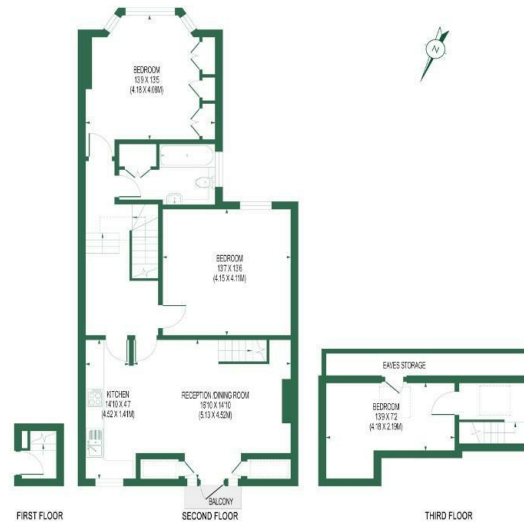
- Newly Renovated Throughout
- Three Bedrooms
- Share Of Freehold
- Grand Period Building
- Top Floor
- Split Level
- Potential to Extend STP
- Chain Free
- EPC E
- Service Charge £55 PCM

THE PROPERTY

A brand newly renovated, top floor, bright and spacious three bedroom apartment with share of freehold, set within a grand Period building and located conveniently in central Chiswick. Potential to extend and offered chain free.

CHISWICK HIGH ROAD

APPROX. GIA: 1048 SQ. FT/97.4 SQ.M



FOR ILLUSTRATION PURPOSES ONLY
THIS FLOOR PLAN SHOULD BE USED AS A GENERAL OUTLINE FOR GUIDANCE ONLY AND DOES NOT CONSTITUTE IN WHOLE OR IN PART AN OFFER OR CONTRACT.
ANY INTENDING PURCHASER OR LESSEE SHOULD SATISFY THEMSELVES BY INSPECTION, SURVEY, ENQUIRIES AND FULL SURVEY AS TO THE CORRECTNESS OF EACH STATEMENT.
ANY AREAS, MEASUREMENTS OR DISTANCES QUOTED ARE APPROXIMATE AND SHOULD NOT BE USED TO VALUE A PROPERTY OR BE THE BASIS OF ANY SALE OR LET.

**CLEMENTS
HABBA**



Clements Habba Ltd.
Building 3, Chiswick Park, 566 Chiswick High Rd,
Chiswick, London W4 5YA