



CLEMENTS
HABBA



For Sale



Bina Gardens, Gloucester Road, London

£825,000

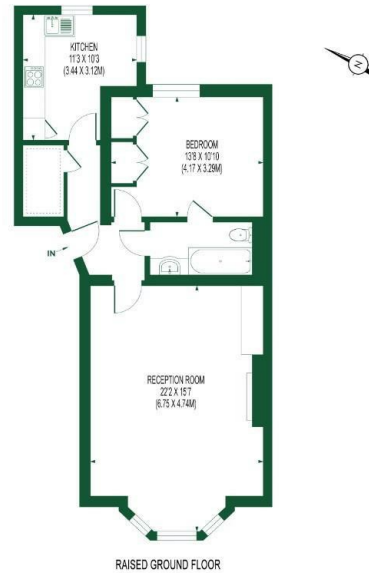
Leasehold

- One Bedroom Flat
- High Ceilings & Detailed Cornicing
- Modern Kitchen
- No Chain
- Ground rent £300
- Victorian
- 747 Sq' - 69 SqM
- Large Double Bedroom
- Service Charge £2696 per annum
- EPC Rating D

THE PROPERTY

This charming one-bedroom flat is situated on the raised ground floor of a classic bay fronted Victorian building, offering a blend of modern convenience and period charm.

BINA GARDENS APPROX. GIA 747 SQ. FT/69.42 SQ.M



FOR ILLUSTRATION PURPOSES ONLY
THIS FLOOR PLAN SHOULD BE USED AS A GENERAL OUTLINE FOR GUIDANCE ONLY AND DOES NOT CONSTITUTE IN WHOLE OR IN PART AN OFFER OR CONTRACT.
ANY INTENDING PURCHASER OR LESSEE SHOULD SATISFY THEMSELVES BY INSPECTION, SURVEY, MEASUREMENT AND FILE SURVEY AS TO THE CORRECTNESS OF EACH STATEMENT.
ANY AREAS, MEASUREMENTS OR DISTANCES QUOTED ARE APPROXIMATE AND SHOULD NOT BE USED TO VALUE A PROPERTY OR BE THE BASIS OF ANY SALE OR LET.

**CLEMENTS
HABBA**



Clements Habba Ltd.
Building 3, Chiswick Park, 566 Chiswick High Rd,
Chiswick, London W4 5YA