



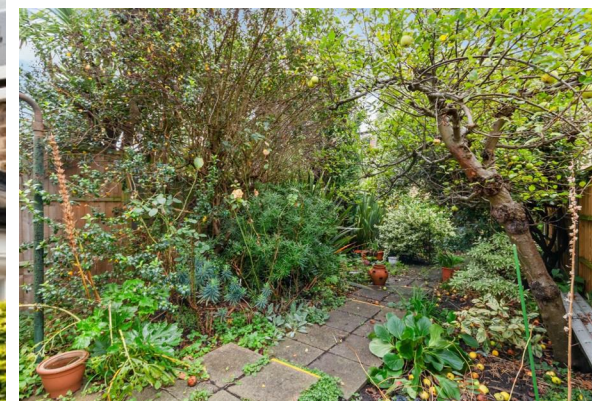
CLEMENTS
HABBA

For Sale

Montgomery Road, Chiswick, London

£950,000

Freehold





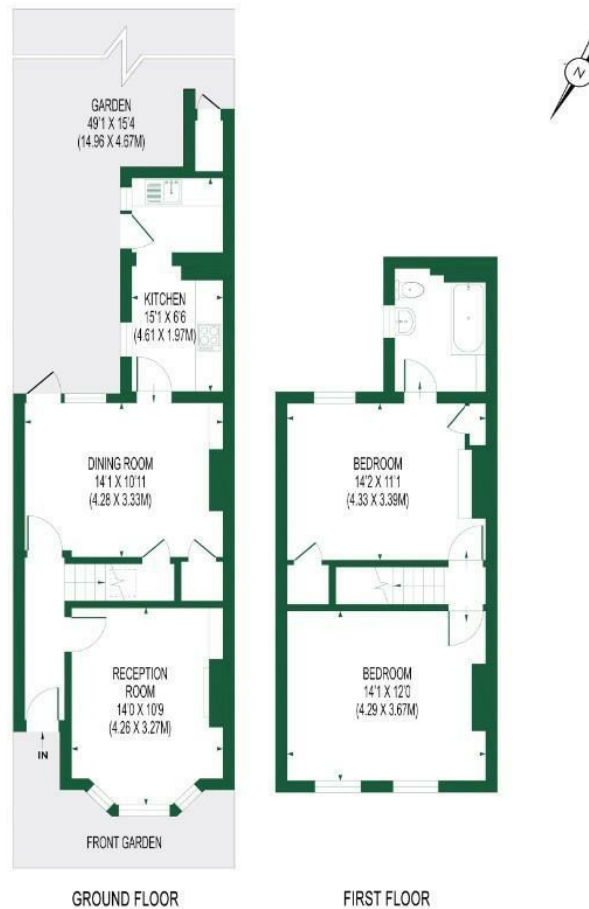


Summary Description

This two bedroom, unmodernised Victorian end of terrace house with a large South facing Garden is located on Montgomery Road, Chiswick W4. The house offers significant potential to extend, both into the loft and at ground floor level (STPP) and is available with no onward chain.

- Two Bedroom House
- Grant Of Probate Issued
- Front Reception Room
- Family Bathroom
- EPC Rating D
- Unmodernised
- Large South Facing Garden
- Dining Room
- Potential To Extend (STPP)
- Freehold - No Chain

MONTGOMERY ROAD
APPROX. GIA 941 SQ.FT/87.43 SQ.M (INCL.STORAGE)



FOR ILLUSTRATION PURPOSES ONLY
THIS FLOOR PLAN SHOULD BE USED AS A GENERAL OUTLINE FOR GUIDANCE ONLY AND DOES NOT CONSTITUTE IN WHOLE OR IN PART AN OFFER OR CONTRACT.
ANY INTENDING PURCHASER OR LESSEE SHOULD SATISFY THEMSELVES BY INSPECTION, SEARCHES, ENQUIRIES AND FULL SURVEY AS TO THE CORRECTNESS OF EACH STATEMENT.
ANY AREAS, MEASUREMENTS OR DISTANCES QUOTED ARE APPROXIMATE AND SHOULD NOT BE USED TO VALUE A PROPERTY OR BE THE BASIS OF ANY SALE OR LET.

**CLEMENTS
HABBA**