



CLEMENTS  
HABBA



For Sale



Elmwood Road, Chiswick, London

£1,395,000

Freehold







A vibrant blue accent wall serves as the focal point, housing a large flat-screen TV mounted on a dark blue mantelpiece. Below the mantel is a classic cast-iron fireplace with a glass door. The wall is flanked by built-in white shelving units filled with books, decorative objects, and framed art. A small table lamp sits on a white cabinet to the left of the fireplace. Two potted plants are placed on the floor in front of the fireplace. The room features light-colored wood flooring and a white ceiling with decorative crown molding.

A dining area is visible through a large window with blue curtains. The dining table is made of light-colored wood and is surrounded by wooden chairs with red seats. A pendant light with a cage-style shade hangs above the table. A white cabinet stands against the wall near the window. A potted plant sits on a small black metal stand next to the cabinet. The view outside the window shows a lush green garden.

A blue sofa with yellow and white patterned cushions is positioned in the foreground. A rustic wooden coffee table with a thick top and dark legs sits in front of the sofa. The room is well-lit by natural light from the window and a pendant light.

White built-in shelving units are filled with books, including titles like 'SEARCH FOR LOVE' and 'CURIOUS INCIDENT OF A DOG IN THE NIGHT-TIME'. A framed picture of a landscape is placed on a white cabinet below the shelves. A small potted plant in a woven basket sits on the cabinet. A dark grey sofa with a yellow cushion is partially visible in the bottom right corner.





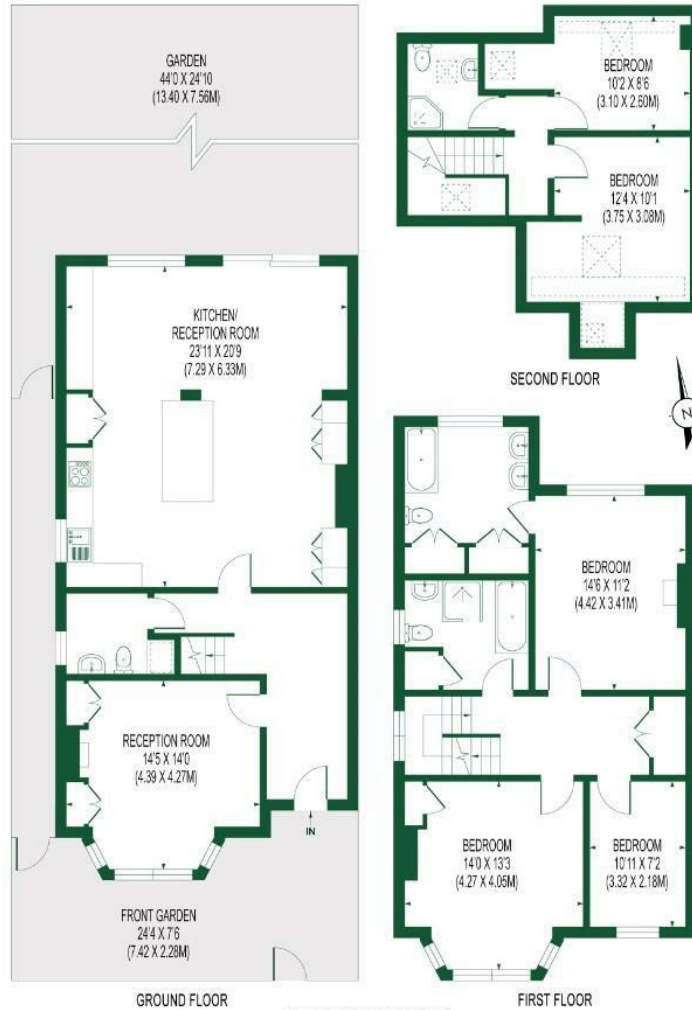
## Summary Description

Nestled on Elmwood Road within the charming Grove Park area of Chiswick, this beautifully presented semi-detached five-bedroom, three-bathroom home offers a perfect blend of modern living and period charm.

- Five Bedroom Family Home
- 2003 Sq' - 186 SqM
- Large Kitchen & Family area
- Three Bathrooms (one En-suite)
- EPC Rating D
- Semi Detached
- Large Private Garden
- Downstairs WC
- Excellent Local Schooling
- Grove Park - Chiswick

# ELMWOOD ROAD

APPROX. GIA 2003 SQ.FT/186.06 SQ.M (INCL. REDUCED HEIGHT)  
1939 SQ.FT/180.15 SQ.M (EXCL. REDUCED HEIGHT)



**FOR ILLUSTRATION PURPOSES ONLY**  
THIS FLOOR PLAN SHOULD BE USED AS A GENERAL OUTLINE FOR GUIDANCE ONLY AND DOES NOT CONSTITUTE IN WHOLE OR IN PART AN OFFER OR CONTRACT.  
ANY INTENDING PURCHASER OR LESSEE SHOULD SATISFY THEMSELVES BY INSPECTION, SEARCHES, ENQUIRIES AND FULL SURVEY AS TO THE CORRECTNESS OF EACH STATEMENT.  
ANY AREAS, MEASUREMENTS OR DISTANCES QUOTED ARE APPROXIMATE AND SHOULD NOT BE USED TO VALUE A PROPERTY OR BE THE BASIS OF ANY SALE OR LET.



Clements Habba Ltd.  
Building 3, Chiswick Park, 566 Chiswick High Rd,  
Chiswick, London W4 5YA