



CLEMENTS  
HABBA

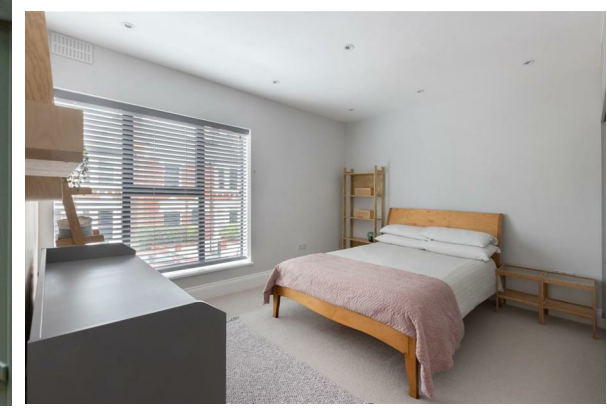


For Sale

Ashbourne Grove, Chiswick, London

£925,000

Freehold



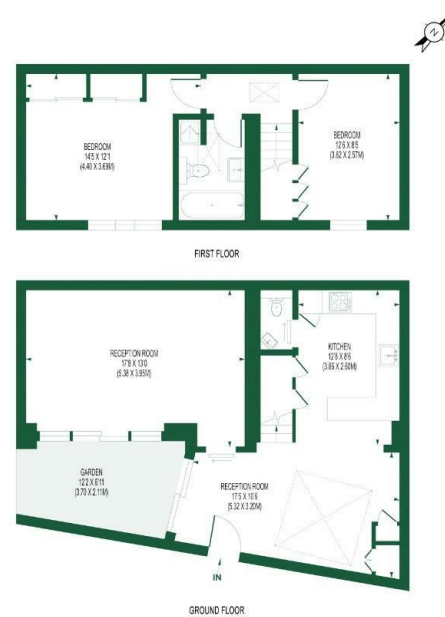
- Two Bedroom House
- Beautiful Modern Finish
- South Facing Walled Patio
- Open Plan Kitchen
- Downstairs WC
- 922 Sq Ft
- Underfloor Heating Throughout
- Luxury Family Bathroom
- Chain Free
- EPC C

## THE PROPERTY

A stunning and newly converted, modern two double bedroom freehold house, on an unusually wide plot, located in the center of Chiswick, with a private walled south facing patio. Offering fantastic living space and presented in immaculate condition throughout. Available Chain Free. EPC C

### ASHBOURNE GROVE

APPROX. GIA: 922 SQ. FT/85.63 SQ.M



FOR ILLUSTRATION PURPOSES ONLY  
 THIS FLOOR PLAN SHOULD BE USED AS A GENERAL OUTLINE FOR GUIDANCE ONLY AND DOES NOT CONSTITUTE IN WHOLE OR IN PART AN OFFER OR CONTRACT.  
 ANY INTENDING PURCHASER OR LESSEE SHOULD VERIFY THESE FIGURES BY INSPECTION, SURVEY, MEASUREMENT AND FULL COMPLIANCE TO THE CORRECTNESS OF EACH STATEMENT.  
 ANY AREAS, MEASUREMENTS OR DISTANCES QUOTED ARE APPROXIMATE AND SHOULD NOT BE USED TO VALUE A PROPERTY OR BE THE BASIS OF ANY SALE OR LET.

CLEMENTS  
HABBA



Clements Habba Ltd.  
 Building 3, Chiswick Park, 566 Chiswick High Rd,  
 Chiswick, London W4 5YA