



CLEMENTS
HABBA



For Sale



Station Gardens, Chiswick, London

£900,000

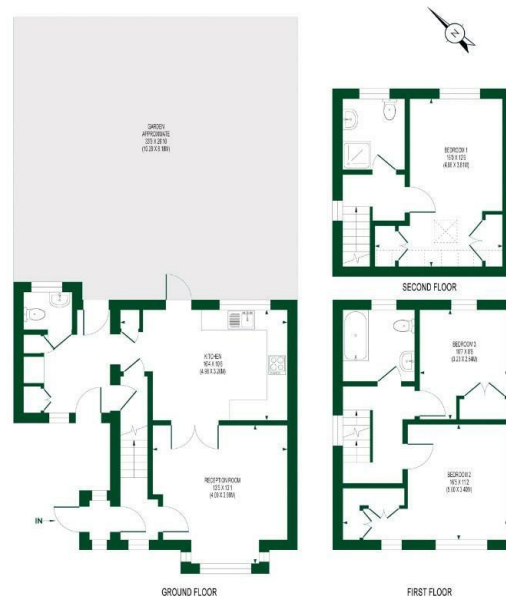
Freehold

- Three Double Bedroom Freehold House
- Two Bathrooms (One En-suite)
- Two Entrances
- EPC Rating D
- Council Tax Band D
- Large Private Garden
- Downstairs Guest Cloakroom
- Off Street Car Parking
- Grove Park Location
- No Chain

THE PROPERTY

New to the market is this three bedroom – two bathroom Freehold family home, benefiting from a large private garden and off street car parking situated on a quiet residential road in Grove Park, Chiswick.

STATION GARDENS APPROX. GIA 1102 SQ.FT/102.30 SQ.M



FOR ILLUSTRATION PURPOSES ONLY
THIS FLOOR PLAN SHOULD BE USED AS A GENERAL OUTLINE FOR GUIDANCE ONLY AND DOES NOT CONSTITUTE IN WHOLE OR IN PART AN OFFER OR CONTRACT. ANY INTENDING PURCHASER OR LESSEE SHOULD VERIFY THESE BY INSPECTING, MEASURING, SOUNDERING AND FULL SURVEY AS TO THE CORRECTNESS OF EACH STATEMENT. ANY AREAS, MEASUREMENTS OR DISTANCES QUOTED ARE APPROXIMATE AND SHOULD NOT BE USED TO VALUE A PROPERTY OR BE THE BASIS OF ANY SALE OR LET.

CLEMENTS
HABBA