



CLEMENTS HABBA



The Avenue, Chiswick, London

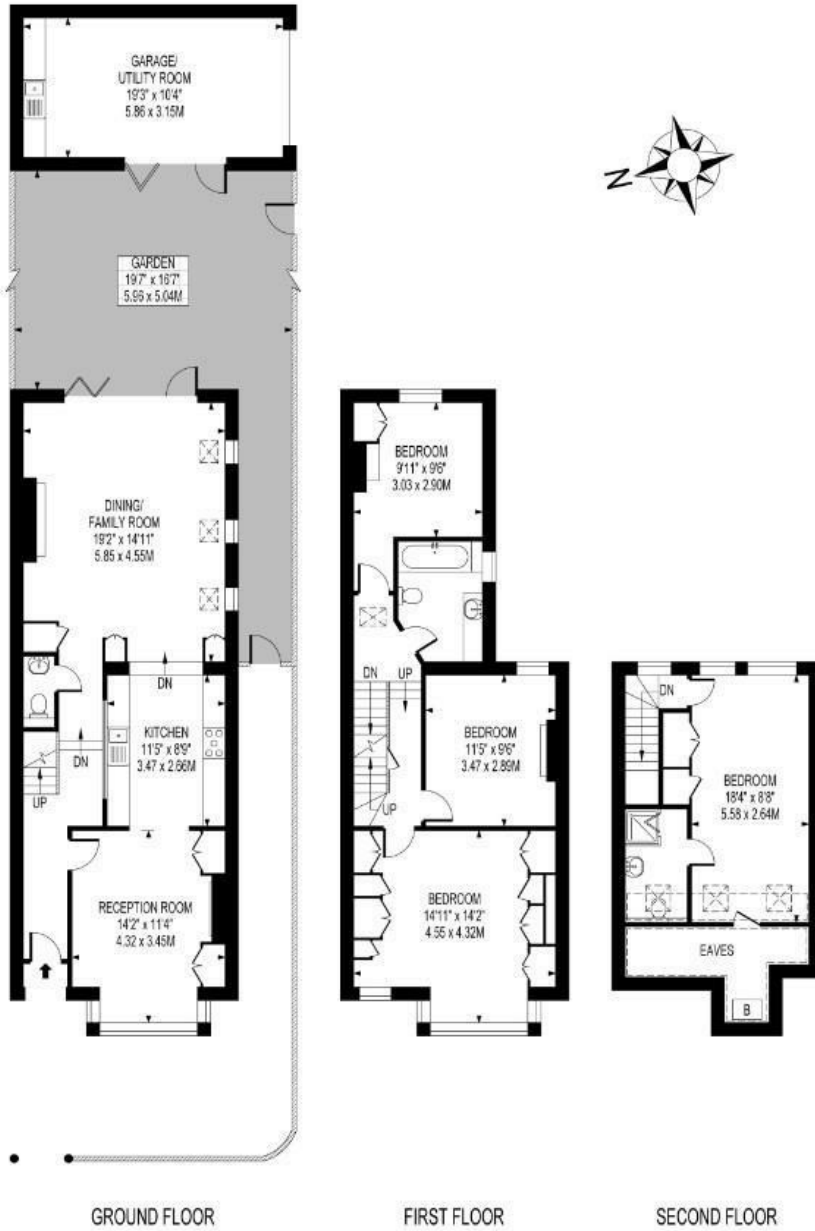
We're pleased to market a beautifully finished, spacious and light end of terrace, four bedroom home for let. Located in the desirable Bedford Park borders, close to Turnham Green Tube, featuring a private garden and garage. Available Unfurnished from the July 8th.

- Beautifully Presented Family Home
- Four Bedrooms
- Two Bathrooms
- Desirable Bedford Park Location
- Separate Garage w Utilities
- Recently Refurbished
- Private Garden
- Moments From Turnham Green
- Available July 30th
- Unfurnished

£5,850 Per month

THE AVENUE

APPROXIMATE GROSS INTERNAL FLOOR AREA : 1475 SQ FT- 137.0 SQ M
 (EXCLUDING GARAGE/UTILITY ROOM)
 GARAGE/UTILITY AREA : 204 SQ FT- 19.0 SQ M
 TOTAL AREA : 1679 SQ FT- 156.0 SQ M



FOR ILLUSTRATION PURPOSES ONLY

THIS FLOOR PLAN SHOULD BE USED AS A GENERAL OUTLINE FOR GUIDANCE ONLY AND DOES NOT CONSTITUTE IN WHOLE OR IN PART AN OFFER OR CONTRACT. ANY INTENDING PURCHASER OR LESSEE SHOULD SATISFY THEMSELVES BY INSPECTION, SEARCHES, ENQUIRIES AND FULL SURVEY AS TO THE CORRECTNESS OF EACH STATEMENT. ANY AREAS, MEASUREMENTS OR DISTANCES QUOTED ARE APPROXIMATE AND SHOULD NOT BE USED TO VALUE A PROPERTY OR BE THE BASIS OF ANY SALE OR LET.

Energy Efficiency Rating		Current	Potential
Very energy efficient - lower running costs			
(92 plus) A			80
(81-91) B			
(69-80) C			
(55-68) D			
(39-54) E			
(21-38) F			
(1-20) G			
Not energy efficient - higher running costs			
England & Wales		EU Directive 2002/91/EC	

Environmental Impact (CO ₂) Rating		Current	Potential
Very environmentally friendly - lower CO ₂ emissions			
(92 plus) A			
(81-91) B			
(69-80) C			
(55-68) D			
(39-54) E			
(21-38) F			
(1-20) G			
Not environmentally friendly - higher CO ₂ emissions			
England & Wales		EU Directive 2002/91/EC	