



CLEMENTS  
HABBA



For Sale

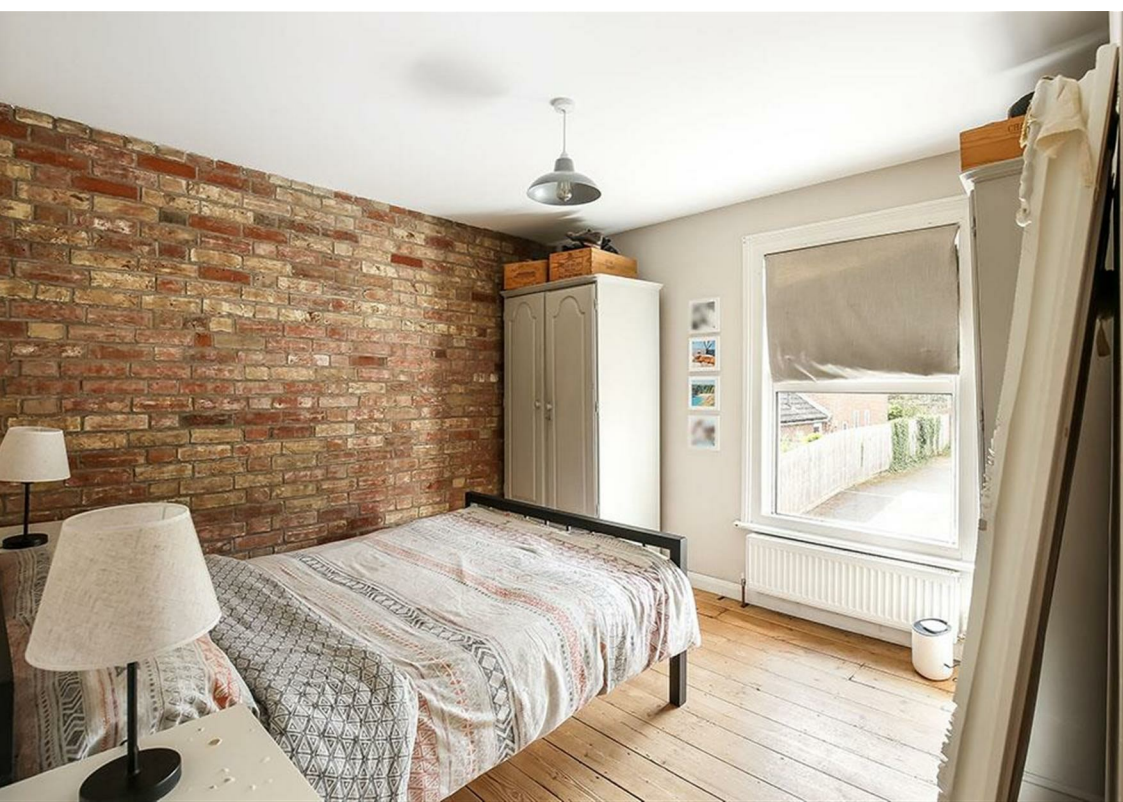
Fairview Road, Salisbury

£235,000

Freehold







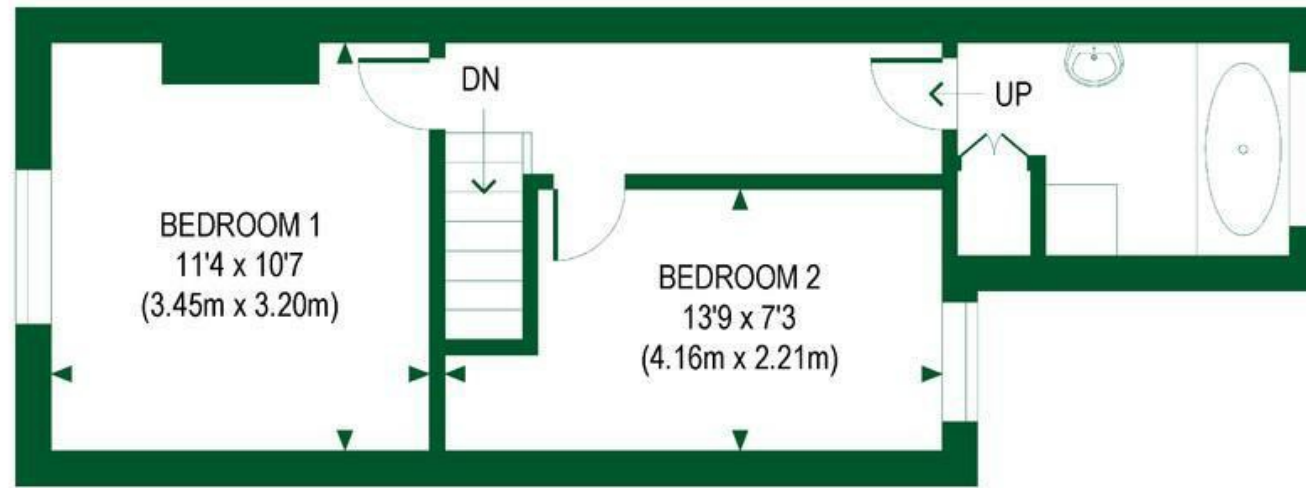
## Summary Description

Nestled on this quiet residential road, this two double bedroom period house presents a charming blend of character and modern comfort.

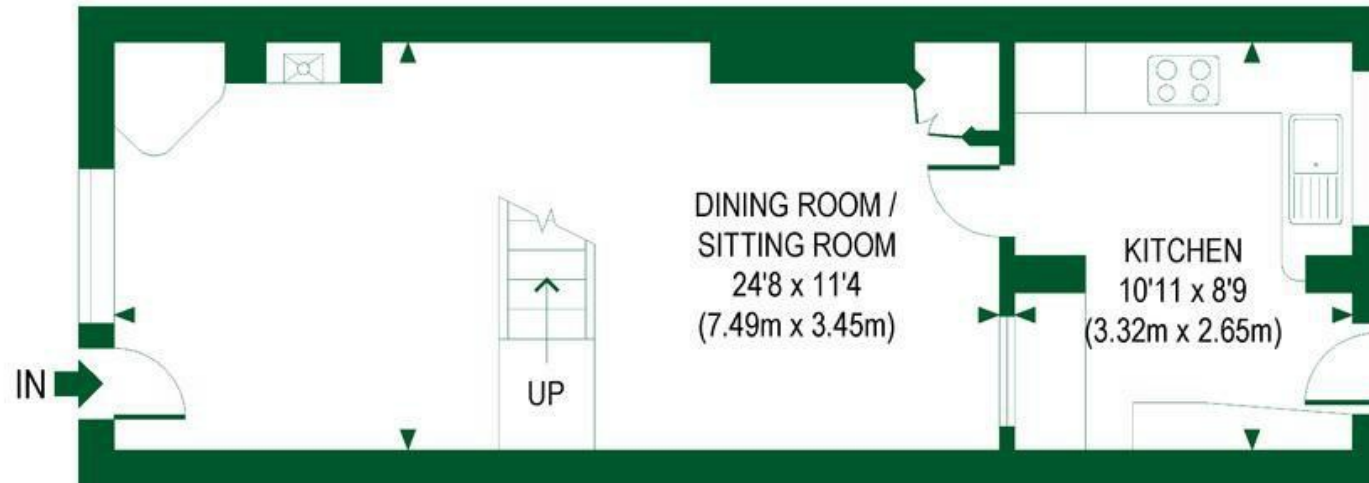
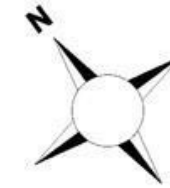
- Two Bedroom Freehold Home
- Rustic Wood Burner
- Exposed Brick
- Double Glazed Windows
- Local Council - Wiltshire
- Wooden Floor Throughout
- Oak Suffolk Latch Doors
- Private Garden (Southerly Aspect)
- EPC Rating C
- Moments from Salisbury City Centre

# FAIRVIEW ROAD

APPROXIMATE GROSS INTERNAL AREA  
TOTAL = 728 SQ FT / 67.62 SQ M



FIRST FLOOR



GROUND FLOOR



FOR ILLUSTRATIVE PURPOSES ONLY  
THIS FLOOR PLAN SHOULD BE USED AS A GENERAL OUTLINE FOR GUIDANCE ONLY AND DOES NOT CONSTITUTE IN WHOLE OR IN PART AN OFFER OR CONTRACT.  
ANY INTENDING PURCHASER OR LESSEE SHOULD SATISFY THEMSELVES BY INSPECTION, SEARCHES, ENQUIRIES AND FULL SURVEY AS TO THE CORRECTNESS OF EACH STATEMENT.  
ANY AREAS, MEASUREMENTS OR DISTANCES QUOTED ARE APPROXIMATE AND SHOULD NOT BE USED TO VALUE A PROPERTY OR BE THE BASIS OF ANY SALE OR LET.



Clements Habba Ltd.  
Building 3, Chiswick Park, 566 Chiswick High Rd,  
Chiswick, London W4 5YA