



CLEMENTS
HABBA



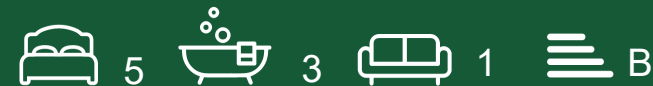
For Sale



The Crescent, Harnham, Salisbury

£450,000

Freehold







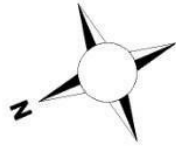
Summary Description

An excellent opportunity to purchase this spacious and well-appointed three storey townhouse, with a garage and off-street car parking, conveniently nestled in this prominent location near to Salisbury District Hospital, with easy access to the historic City centre.

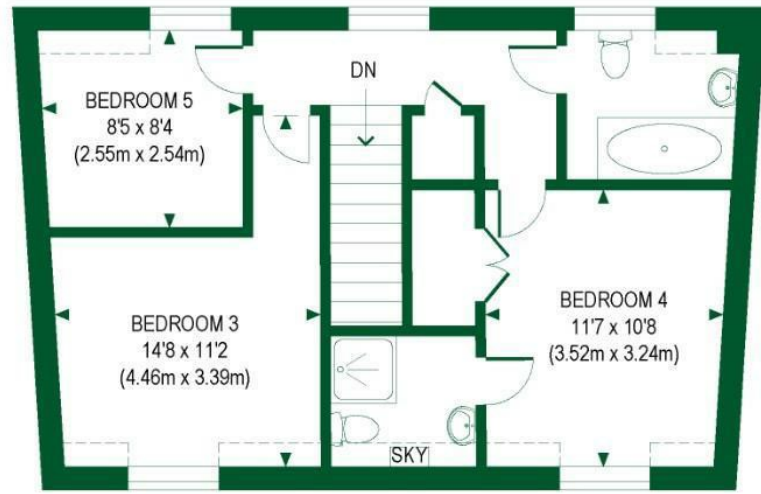
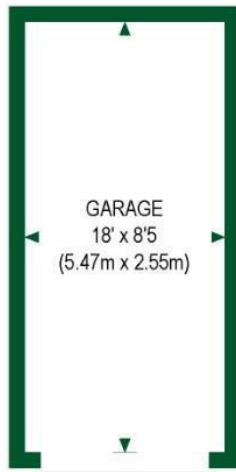
- Five Bedroom Terraced House
- 1697 Sq' - 157 SqM
- Off Street Car Parking
- Open Views of the Green
- Council Tax Band E
- Three Bathrooms (One En-suite)
- Private Garage
- South East Facing Garden
- EPC Rating B
- Moments to Salisbury Hospital and Close to City Centre

THE CRESCENT

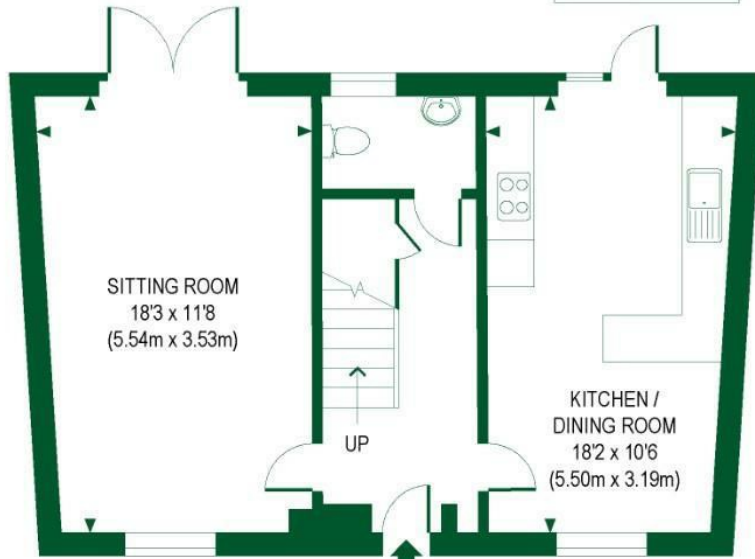
APPROXIMATE GROSS INTERNAL AREA
 MAIN HOUSE = 1547 SQ FT / 143.67 SQ M
 GARAGE = 150 SQ FT / 13.95 SQ M
 TOTAL = 1697 SQ FT / 157.62 SQ M
 OUTBUILDINGS ARE NOT SHOWN
 IN CORRECT ORIENTATION OR LOCATION
 INCLUDES AREAS WITH RESTRICTED ROOM HEIGHT.



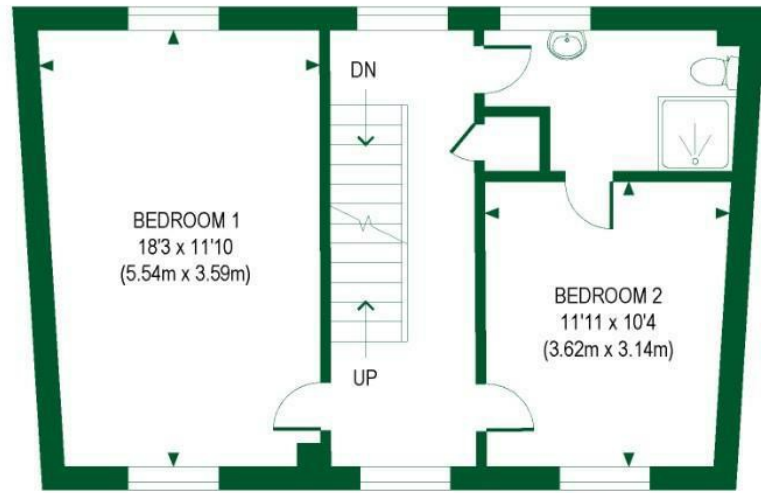
GARAGE



SECOND FLOOR



GROUND FLOOR



FIRST FLOOR



INDICATES RESTRICTED ROOM HEIGHT.

FOR ILLUSTRATIVE PURPOSES ONLY
 THIS FLOOR PLAN SHOULD BE USED AS A GENERAL OUTLINE FOR GUIDANCE ONLY AND DOES NOT CONSTITUTE IN WHOLE OR IN PART AN OFFER OR CONTRACT.
 ANY INTENDING PURCHASER OR LESSEE SHOULD SATISFY THEMSELVES BY INSPECTION, SEARCHES, ENQUIRIES AND FULL SURVEY AS TO THE CORRECTNESS OF EACH STATEMENT.
 ANY AREAS, MEASUREMENTS OR DISTANCES QUOTED ARE APPROXIMATE AND SHOULD NOT BE USED TO VALUE A PROPERTY OR BE THE BASIS OF ANY SALE OR LET.



Clements Habba Ltd.
 Building 3, Chiswick Park, 566 Chiswick High Rd,
 Chiswick, London W4 5YA