



CLEMENTS
HABBA



For Sale

Gainsborough Road, Chiswick, London

£1,300,000

Freehold







Summary Description

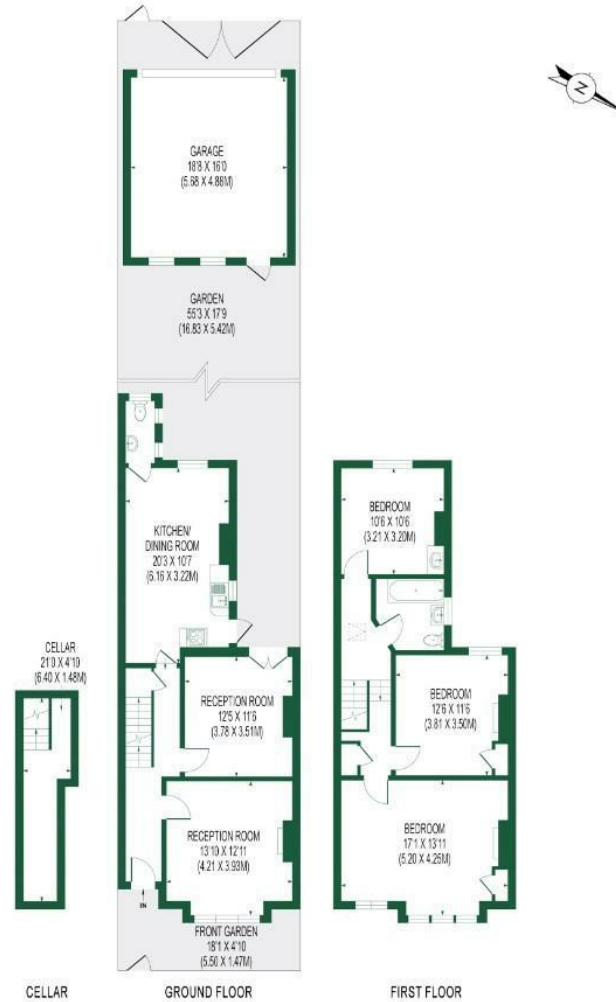
Introducing a rare opportunity to purchase this unmodernised Freehold mid terrace home, enjoying a 55' private garden (with garage), rear access and significant potential to extend (STPP), located in Chiswick, moments from Turnham Green Terrace.

- Three Bedroom Unmodernised House
- Large Private Garden
- Garage (With Rear Access)
- Potential To Extend (STPP)
- Two Reception Rooms
- Probate Sale (Probate Granted)
- Council Tax Band G
- Moments from Turnham Green Terrace
- EPC Rating D
- No Chain

GAINSBOROUGH ROAD

APPROX. GIA: 1390 SQ. FT/129.1 SQ.M

GARAGE: 298 SQ. FT/27.72 SQ.M



FOR ILLUSTRATION PURPOSES ONLY
THIS FLOOR PLAN SHOULD BE USED AS A GENERAL OUTLINE FOR GUIDANCE ONLY AND DOES NOT CONSTITUTE IN WHOLE OR IN PART AN OFFER OR CONTRACT.
ANY INTENDING PURCHASER OR LESSEE SHOULD SATISFY THEMSELVES BY INSPECTION, SEARCHES, ENQUIRIES AND FULL SURVEYS AS TO THE CORRECTNESS OF EACH STATEMENT.
ANY AREAS, MEASUREMENTS OR DISTANCES QUOTED ARE APPROXIMATE AND SHOULD NOT BE USED TO VALUE A PROPERTY OR BE THE BASIS OF ANY SALE OR LET.

