



8 Beaufort Chase, Wilmslow, Cheshire, SK9 2BZ

An immaculately presented and substantially extended five-bedroom, two-bathroom detached family home, this property is situated in a quiet cul-de-sac of only nine detached homes.

The house offers generously proportioned and well-designed accommodation throughout. On the ground floor, an enclosed porch leads to a welcoming hallway with elegant hardwood flooring. The spacious living room, measuring 21'8 x 13'9, features dual-aspect windows, hardwood flooring, and a contemporary living flame gas fire, creating a warm and inviting atmosphere. Adjacent to this is a dining room, ideal for hosting formal gatherings. The centrepiece of the home is the stunning living kitchen, designed as a multifunctional family and entertaining space. This area is equipped with modern wall and base units, granite work surfaces, a peninsula with seating for bar stools, two integrated Bosch electric ovens, a Neff induction hob, glass splashbacks, an extractor, and an integrated dishwasher. There is also space for an American-style fridge freezer. The living and dining space within the kitchen is enhanced by an impressive, vaulted ceiling with six large electric Velux roof windows, feature windows, and bi-folding doors that open onto the rear garden. Completing the ground floor is a utility room with a cloak's cupboard and a downstairs W.C.

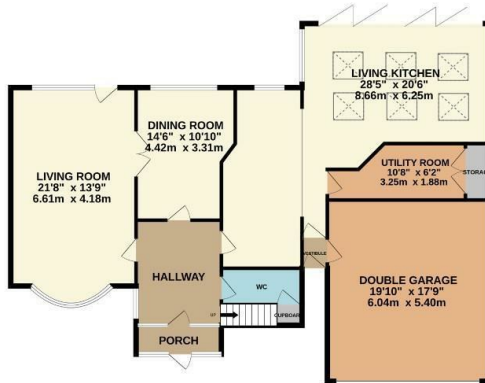
- Substantially extended detached family home
- Quiet small cul-de-sac location
- Five bedrooms (all with fitted/recessed wardrobes)
- Impressive main bedroom suite with dressing room and en-suite shower room
- Stunning living kitchen with space for dining, lounging and cooking
- Utility room and downstairs w.c
- Ample off road parking and an integral double garage
- Established private gardens to the front and rear
- Council Tax Band - G
- Freehold

Offers Over £1,000,000

BASEMENT
8100 sq.ft. (241 sq.m.) approx.

GROUND FLOOR
1500 sq.ft. (139 sq.m.) approx.

1ST FLOOR
8100 sq.ft. (241 sq.m.) approx.



TOTAL FLOOR AREA : 2922 sq.ft. (271.5 sq.m.) approx.

Whilst every attempt has been made to ensure the accuracy of the floorplan contained here, measurements of doors, windows, rooms and any other items are approximate and no responsibility is taken for any error, omission or mis-statement. This plan is for illustrative purposes only and should be used as such by any prospective purchaser. The services, systems and appliances shown have not been tested and no guarantee as to their operability or efficiency can be given.
Made with Metropix ©2024

