

Laburnum Cottage

Wilmslow



Andrew J Nowell
& Company



Laburnum Cottage, 92 Adlington Road, Wilmslow, SK9 2BT

An elegant, stylishly refurbished, deceptively spacious four bedroom Grade II listed cottage on the outskirts of Wilmslow.

- Superb views
- Tastefully Renovated
- Charm and Character
- Four Bedrooms

A bespoke cottage with beautiful original features such as sash windows, feature brick walls and exposed ceiling beams which are complemented by high specification contemporary styling which includes gas underfloor heating and an Oak stair case with glass balustrade. Secondary glazed windows to the front and double glazed to the rear. In addition to the underfloor heating there are radiators run by a gas boiler.

The accommodation on ground floor level includes a dining hall (with feature exposed brick wall, dual aspect windows, slate tiled floor and a wood burner), sitting room (with dual aspect including French doors opening to the rear and a wood burner with wooden mantle), breakfast kitchen (re-fitted with hand painted Shaker units, Granite work surfaces, Lacanache range oven, wine fridge and an integrated dishwasher. Two breakfast bar areas with room for bar stools), Utility room and WC.

The lower ground floor reveals a double bedroom (with French doors which lead to the garden) and the first floor provides a landing, a spacious main bedroom (with stunning vaulted ceiling and dual aspect windows), two further bedrooms (one with exposed 'A Frame' and both with vaulted ceilings) and a bathroom (fitted with white sanitary ware which includes twin wash hand basins within a vanity unit, a bath and walk in shower with Grohe thermostatic fittings. Travertine tiling, ladder radiator and a vaulted ceiling).





A York Stone paved driveway to the front provides off road parking and there is a large attractive private South facing rear garden which is not overlooked and benefits from stunning views over green belt fields to the rear.

The rear garden is laid mainly to lawn with a large patio, raised timber deck, attached boiler room, summer house (with light and power), garden shed and tree borders.

Laburnum Cottage is situated on the outskirts of Wilmslow Town Centre and is also within easy reach of Alderley Edge, Bramhall and Prestbury.

Important Information

What 3 Words – [///friend.crusaders.helper](http://friend.crusaders.helper)

Council Tax – F

EPC Rating – D

Tenure – Freehold

Heating: Gas Fired Central Heating

Services: Mains Gas, Electric, Water & Drainage

Parking: Driveway

Flood Risk*: Medium risk of surface water flooding, very low risk of other types of flooding.

Broadband**: Superfast Broadband available at the property

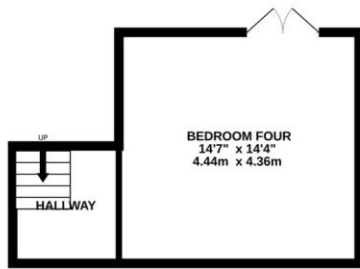
Mobile Coverage**: Mobile coverage with main providers (EE, O2, Three & Vodafone). Limited indoor coverage with EE, Three and O2

* Information provided by GOV.UK

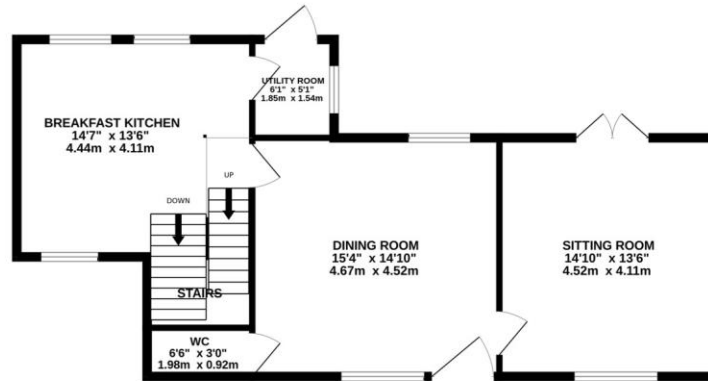
**Information provided by Ofcom checker.

The information isn't guaranteed. Andrew J Nowell take no responsibility for inaccuracies and advise potential buyers to do their own checks before committing to purchase.

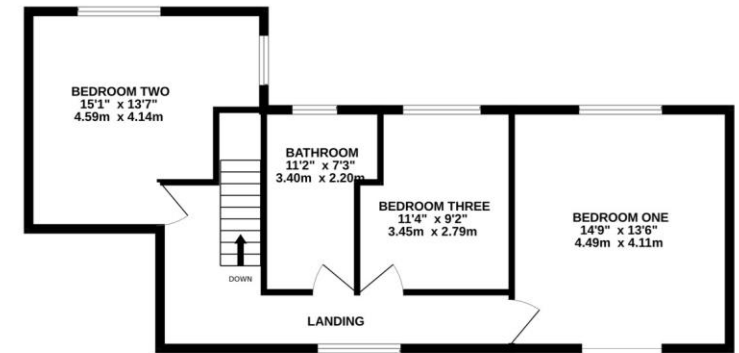
LOWER GROUND FLOOR
261 sq.ft. (24.3 sq.m.) approx.



GROUND FLOOR
702 sq.ft. (65.3 sq.m.) approx.



1ST FLOOR
671 sq.ft. (62.3 sq.m.) approx.



TOTAL FLOOR AREA : 1635 sq.ft. (151.9 sq.m.) approx.

Whilst every attempt has been made to ensure the accuracy of the floorplan contained here, measurements of doors, windows, rooms and any other items are approximate and no responsibility is taken for any error, omission or mis-statement. This plan is for illustrative purposes only and should be used as such by any prospective purchaser. The services, systems and appliances shown have not been tested and no guarantee as to their operability or efficiency can be given.

Made with Metropix ©2024

8 London Road, Alderley Edge, Cheshire SK9 7JS

Email: mail@andrewjnowell.co.uk

T 01625 585905

www.andrewjnowell.co.uk

**Andrew J Nowell
& Company**

N.B. Andrew J. Nowell & Company for themselves and for the vendors or lessors of this property whose agents they are give notice that: 1. The particulars are set out as a general outline only for the guidance of intending purchasers or lessees and do not constitute nor constitute part of an offer or contract. 2. All descriptions, dimensions, references to condition or necessary permissions for use and occupation and other details are given without responsibility and any intending purchasers or tenants should not rely on them as statements or representations of fact but must satisfy themselves by inspection or otherwise as to the correctness of each of them. 3. No person in the employment of Andrew J. Nowell & Company has any authority to make or give any representation or warranty whatever in relation to this property.