



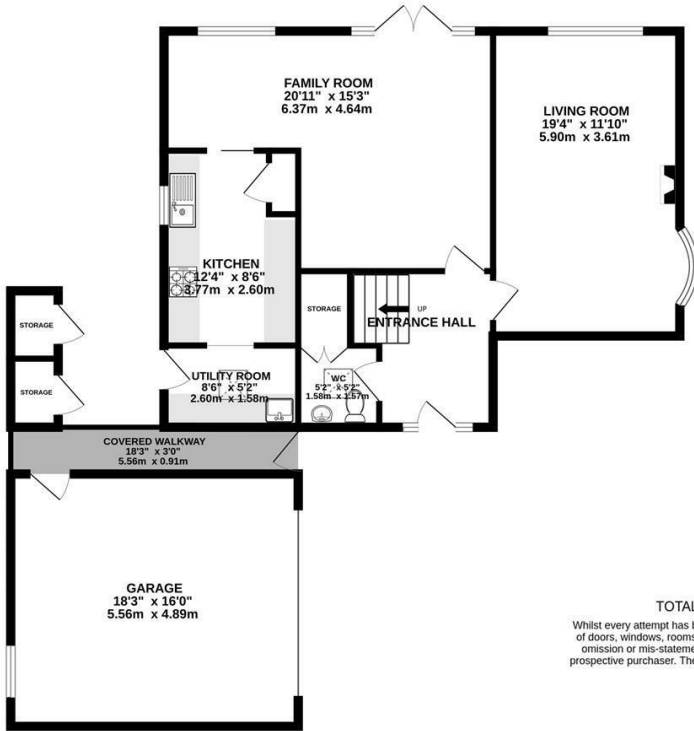
## 14 Cobbetts Way, Wilmslow, SK9 6HN

A four bedroom detached family home on this secluded cul-de-sac within easy reach of the town centre.

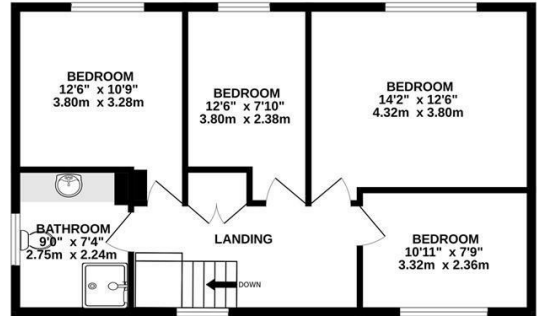
- Detached family home
- Great potential for modernisation
- Large garden with open aspect
- No onward chain
- Corner plot
- Cul-de-sac in Wilmslow

Guide Price £750,000

GROUND FLOOR  
1077 sq.ft. (100.1 sq.m.) approx.



1ST FLOOR  
631 sq.ft. (58.6 sq.m.) approx.



TOTAL FLOOR AREA : 1708 sq.ft. (158.7 sq.m.) approx.

Whilst every attempt has been made to ensure the accuracy of the floorplan contained here, measurements of doors, windows, rooms and any other items are approximate and no responsibility is taken for any error, omission or mis-statement. This plan is for illustrative purposes only and should be used as such by any prospective purchaser. The services, systems and appliances shown have not been tested and no guarantee as to their operability or efficiency can be given.  
Made with Metropix ©2024

