

The Old School House

Henbury



Andrew J Nowell
& Company



The Old School House, School Lane, Henbury, SK11 9PH

A charming period detached home which has been completely renovated by the current owners and offers spacious accommodation with a wealth of original features.

- South Facing Garden
- Open Plan Living
- 0.8 Acres
- Open Views

The Old School House is a unique period family home which has been carefully extended by the current owners with great care taken to retain the original charm and character.

Features of particular note are the impressive double height vaulted drawing room with exposed beams and trusses and brick fireplace and the stunning open living dining kitchen. The kitchen has traditional shaker style units, quartz worksurfaces with large central island and integrated appliances. There are two sets of large sliding doors which open onto the south facing stone flagged patio.

In addition, on the ground floor is the entrance hall, snug, gym, study, utility room, downstairs WC, two double bedrooms and a shower room.

To the first floor is the superb open principal bedroom suite with built in wardrobes and large ensuite bathroom with double sink, walk-in shower and bath. There are two further double bedrooms and two bathrooms (1 ensuite). All of the bathrooms have bespoke tiling and a mixture of contemporary and traditional fittings.







Externally the property is approached through a set of electric gates opening onto a large driveway providing off road parking for several vehicles and leading to the integrated garage/plant room with electric garage door.

The generous gardens and grounds which extend to over 0.8 acres wrap around the house and consist of an orchard, large, manicured lawns with mature trees and borders and a large south facing stone flagged patio enjoying stunning open views across the neighbouring countryside.

The Old School House is situated in the idyllic semi-rural village of Henbury. Henbury has the period church, local public house and wonderful walks across the surrounding countryside. Alderley Edge village is within 5 minutes drive. Alderley village offers a good range of shopping including the Waitrose supermarket, stylish boutiques and fine restaurants.

The area is renowned for its excellent schooling and The Edge is a well-known beauty spot of historical importance with excellent walks. The motorway network system is within easy access, as is Manchester International Airport, local and commuter rail links to Manchester and London.

Additional Information

What 3 Words – [///dare.challenge.wealth](http://dare.challenge.wealth)

Council Tax Band – G

EPC Rating – E

Tenure – Freehold

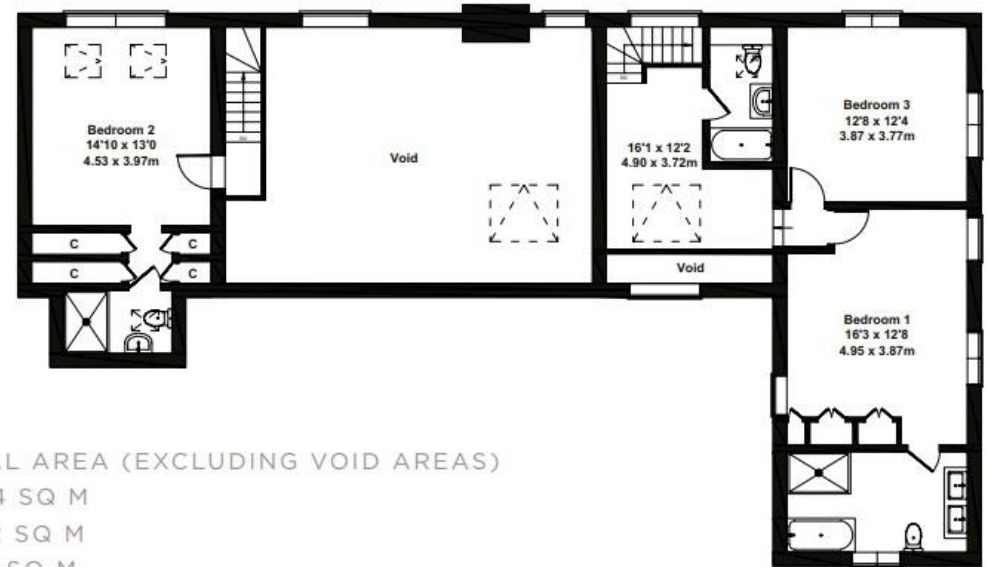
Services – Mains electricity & water, LPG central heating and water treatment tank drainage.



Ground Floor



First Floor



APPROXIMATE NET INTERNAL AREA (EXCLUDING VOID AREAS)
 HOUSE - 3528 SQ FT - 327.74 SQ M
 GARAGE - 323 SQ FT - 30.02 SQ M
 TOTAL - 3851 SQ FT - 357.76 SQ M

8 London Road, Alderley Edge, Cheshire SK9 7JS
 Email: mail@andrewjnowell.co.uk

T 01625 585905
www.andrewjnowell.co.uk

**Andrew J Nowell
 & Company**

N.B. Andrew J. Nowell & Company for themselves and for the vendors or lessors of this property whose agents they are give notice that: 1. The particulars are set out as a general outline only for the guidance of intending purchasers or lessees and do not constitute nor constitute part of an offer or contract. 2. All descriptions, dimensions, references to condition or necessary permissions for use and occupation and other details are given without responsibility and any intending purchasers or tenants should not rely on them as statements or representations of fact but must satisfy themselves by inspection or otherwise as to the correctness of each of them. 3. No person in the employment of Andrew J. Nowell & Company has any authority to make or give any representation or warranty whatever in relation to this property.