

# The Hemlock

Wilmslow



Andrew J Nowell  
& Company



## Hemlock, Ladies Walk Drive, Gorse Road, SK9 5DP

This stunning new build home offers spacious and versatile accommodation paired with substantial gardens and grounds.

- Corner Plot
- Siematic Kitchen
- Open Plan living
- Siemens appliances

The Hemlock enjoys favoured positioning within the development, occupying a corner plot defined by estate railings to the front.

The property is approached along a gravel driveway which provides sufficient external space for guest parking and access to the integral double garage with electrically operated door and tiled flooring.

To the ground floor a spacious hallway makes a welcoming first impression; a living room with media wall with feature fire is off to the right whilst to the left Oak flooring continues through double doors into the impressive triple aspect open plan living/dining/kitchen with bi-folding doors on to the gardens. The kitchen is arranged around a central island for informal dining and is appointed with a comprehensive range of appliances including a Quooker tap, Siemens fridge, freezer, oven, dishwasher, fan oven and combination microwave oven. Double doors from the kitchen area open into a versatile second reception room. A cloakroom, WC and fitted utility room with door to outside completes the ground floor accommodation.







A contemporary oak and glass staircase with LED lighting leads to the first floor galleried landing which services five bedrooms, a laundry room and a family bathroom with free standing bath and a separate shower. Bedroom three features a beautifully appointed en suite shower room. The impressive principal and guest bedroom suites both feature dressing rooms and a contemporary ensuite shower rooms



The landscape has been designed by award winning Landscape Architects to compliment the inside/ outside living spaces. There are lawned gardens to the front and rear whilst an Indian stone patio adjoining the bi-folding doors provides the perfect space for outdoor entertaining.

Postcode - SK9 5DP

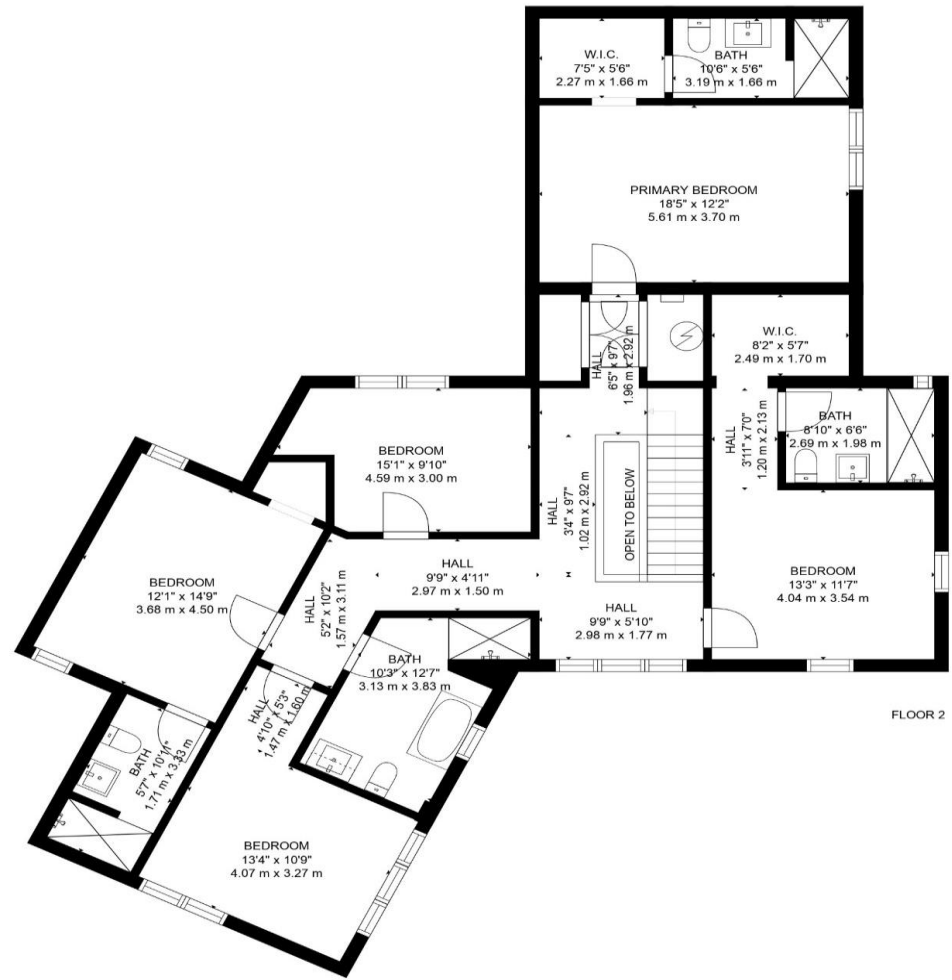
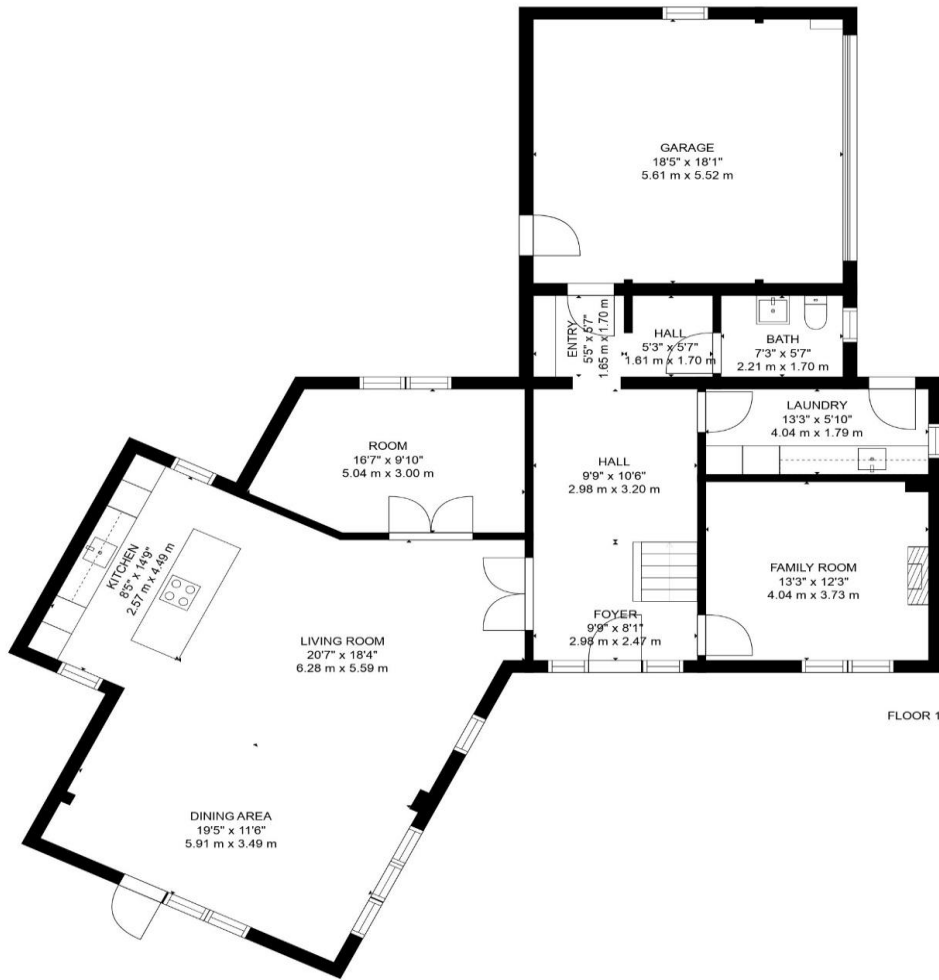
What 3 Words – tower.tiger.frames

Council Tax Band – TBC

EPC Rating – B

Tenure – Freehold





MEASUREMENTS ARE CALCULATED BY CUBICASA TECHNOLOGY. DEEMED HIGHLY RELIABLE BUT NOT GUARANTEED.

8 London Road, Alderley Edge, Cheshire SK9 7JS

Email: [mail@andrewjnowell.co.uk](mailto:mail@andrewjnowell.co.uk)

T 01625 585905

[www.andrewjnowell.co.uk](http://www.andrewjnowell.co.uk)

**Andrew J Nowell  
& Company**

N.B. Andrew J. Nowell & Company for themselves and for the vendors or lessors of this property whose agents they are give notice that: 1. The particulars are set out as a general outline only for the guidance of intending purchasers or lessees and do not constitute nor constitute part of an offer or contract. 2. All descriptions, dimensions, references to condition or necessary permissions for use and occupation and other details are given without responsibility and any intending purchasers or tenants should not rely on them as statements or representations of fact but must satisfy themselves by inspection or otherwise as to the correctness of each of them. 3. No person in the employment of Andrew J. Nowell & Company has any authority to make or give any representation or warranty whatever in relation to this property.