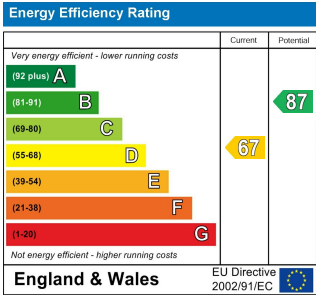
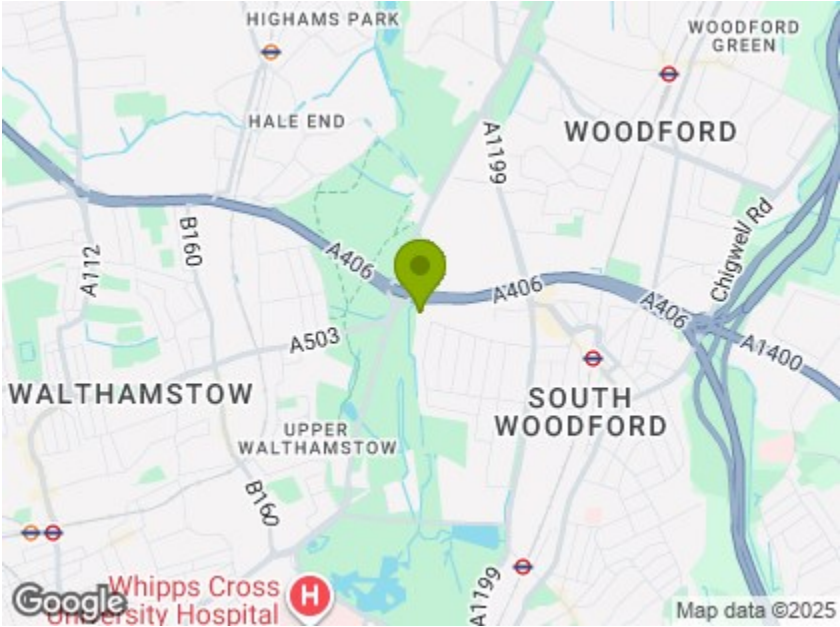


Total Area: 59.6 m² ... 642 ft²

Whilst every attempt has been made to ensure the accuracy of the floor plan contained here, measurements of doors, windows, rooms and any other items are approximate and no responsibility is taken for any error, omission, or mis-statement. This plan is for illustrative purposes only and should be used as such by any prospective purchaser. The services, systems and appliances shown have not been tested and no guarantee as to their operability or efficiency can be given.



GROVE END, SOUTH WOODFORD

£2,100 Per Calendar Month

2 Bed House - End Terrace



Features:

- Two Bedroom Terraced House
- Secluded South Facing Garden
- No Through Road Location
- Refurbished Throughout
- Ground Floor WC
- Double Bedrooms
- Allocated Parking Space
- Moments From Epping Forest
- Side Access

A bright and beautifully presented two bedroom terraced home on a secluded cul de sac, just steps away from our beloved Epping Forest. Refurbished to perfection with stylish accents, you're also just a quick walk from South Woodford Station.

With a peaceful, private garden and a separate raised patio area, you'll enjoy abundant time outdoors, whether tending to your new garden or entertaining friends and family.

REQUEST A VIEWING

0203 3691818

E11, E7, E12 & E15
hello11@stowbrothers.com
0203 397 2222

E4 & N17
hello4@stowbrothers.com
0203 369 6444

E17 & E10
hello17@stowbrothers.com
0203 397 9797

E18 & IG8
hello18@stowbrothers.com
0203 369 1818

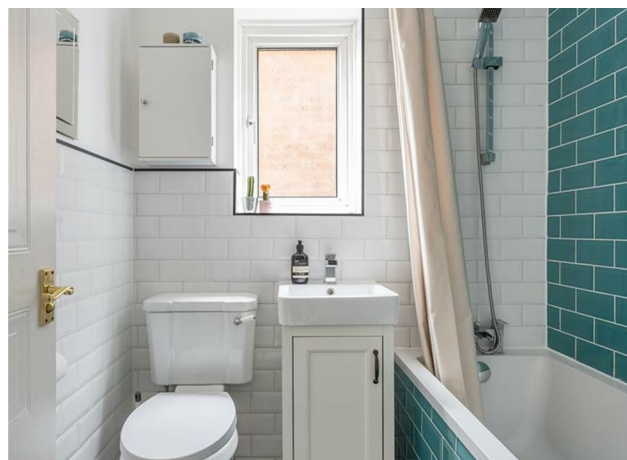
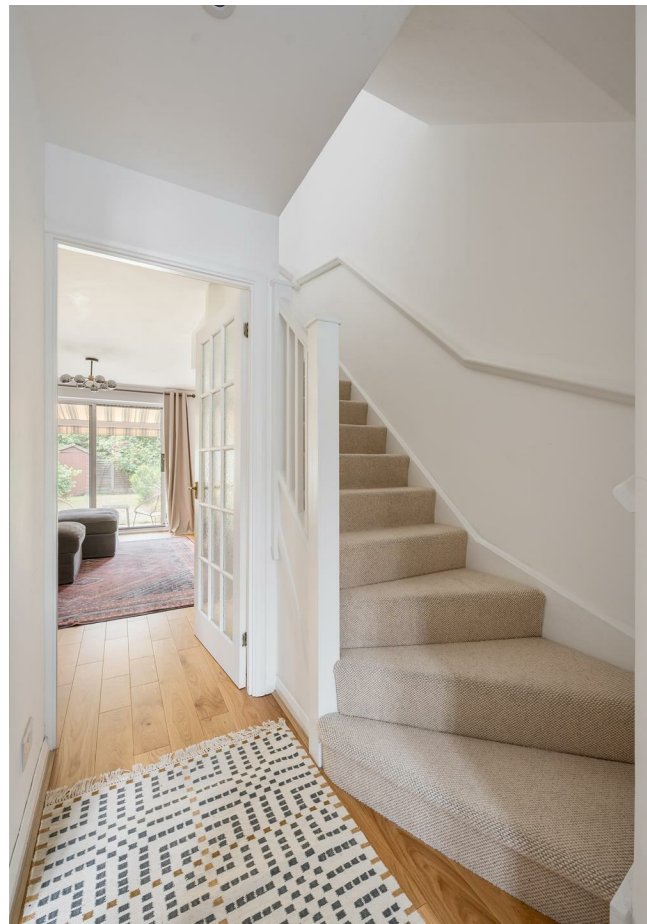
E8, E9, E5, N16, E3 & E2
hellohackney@stowbrothers.com
0208 520 3077

New Homes
newhomes@stowbrothers.com
0203 325 7227

Investment & Development
id@stowbrothers.com
0208 520 6220

Property Maintenance
propertymanagement@stowbrothers.com
0203 325 7228

STOWBROTHERS.COM
@STOWBROTHERS



IF YOU LIVED HERE...

Your rear reception room, spanning 190 square feet, is set to be the beating heart of your new home. Clean white walls enhance the minimalist style, while golden oak hued hardwood floors make for a timeless aesthetic. Large sliding patio doors make for a smooth transition from indoor living to your garden, a neat mix of patio and lawn. Your kitchen is one to love, with an elegant, ruby tiled backsplash, gas stove, fossil grey worktops, and country style, panelled cabinets. A pleasant, retro styled WC completes your ground floor.

Upstairs, you have two spacious bedrooms, both solid doubles and each finished in tranquil tones. To the front your first sleeper has lovely teal and white two-toned walls, while the

rear-facing bedroom, overlooking the garden, is adorned in a relaxing, neutral off-white. This bedroom also includes exquisite, large, panelled white wardrobes, providing ample storage. Your family bathroom features playful turquoise tiles lining the shower and bath, white metro tiles elsewhere and large slate grey vinyl underfoot.

As noted, Epping Forest is your best door neighbour, ensuring weekends are well spent enjoying endless woodlands and pleasant trails. For convenient transport into central London, nearby South Woodford tube provides quick access to the City in eighteen minutes and the West End in around half an hour via the Central line. You're also a fifteen minute walk from George Lane, a social hub for day to day amenities, restaurants and cafes such as, Fresh as a Daisy, a fabulous spot for brunch.



WHAT ELSE?

- Young families will be pleased that top-rated nursery, The Sunflower Nursery South Woodford, is just a ten minute walk away.
- Your new local is George Lane's original namesake, The George, a classic community pub with a spacious garden, and an impressive variety of lagers.
- For additional greenery and outdoor opportunities, Highams Park is around a half an hour walk north through Epping Forest, while Leyton Flats and Hollow Forest are a half an hour walk south.

REQUEST A VIEWING
0203 3691818

FOLLOW US ➡ @STOWBROTHERS
STOWBROTHERS.COM



REQUEST A VIEWING
0203 3691818

FOLLOW US ➡ @STOWBROTHERS
STOWBROTHERS.COM



Kitchen
5'9" x 9'10"

WC

Reception Room
12'0" x 15'8"

Bedroom
12'0" x 9'10"

Bathroom
12'0" x 9'8"

Bathroom

Garden
40'0" x 13'3"



REQUEST A VIEWING
0203 3691818

FOLLOW US ➡ @STOWBROTHERS
STOWBROTHERS.COM