

Bedroom
12'9" x 11'11"

Ensuite

Dressing Room
9'6" x 5'0"

Bathroom
6'2" x 5'10"

Bedroom
10'10" x 9'6"

Kitchen / Reception Room
22'1" x 13'7"

Garden
19'8" x 19'8"

Garage
17'8" x 9'2"



FOSTERS CLOSE, SOUTH WOODFORD

Offers In Excess Of £425,000 Leasehold
2 Bed Flat



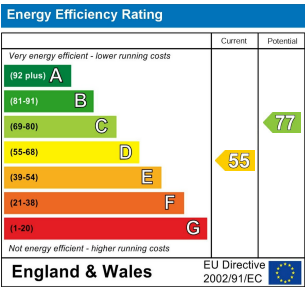
Features:

- Two Bedrooms
- Beautifully Presented
- Landscaped West Facing Private Garden
- Private Front Door
- Short Walking Distance to South Woodford Station
- Garage
- Dressing Room
- Driveway (Off Street Parking)
- Extended
- En-suite to Main Bedroom

This thoughtfully extended two-bedroom home sits on a quiet cul-de-sac in a peaceful spot, within easy reach of Woodford/South Woodford's excellent amenities, from fantastic eateries to great transport links.

Inside, the finish is immaculate, blending mid-century character with modern convenience. The master bedroom comes complete with its own dressing room and ensuite, while the open-plan living space is bright and spacious. Outside you'll find a west-facing garden, plus the added bonus of a driveway for two cars and garage. It's being offered chain-free, too.

REQUEST A VIEWING
0203 3691818



E11, E7, E12 & E15
hello11@stowbrothers.com
0203 397 2222

E4 & N17
hello4@stowbrothers.com
0203 369 6444

E17 & E10
hello17@stowbrothers.com
0203 397 9797

E18 & IG8
hello18@stowbrothers.com
0203 369 1818

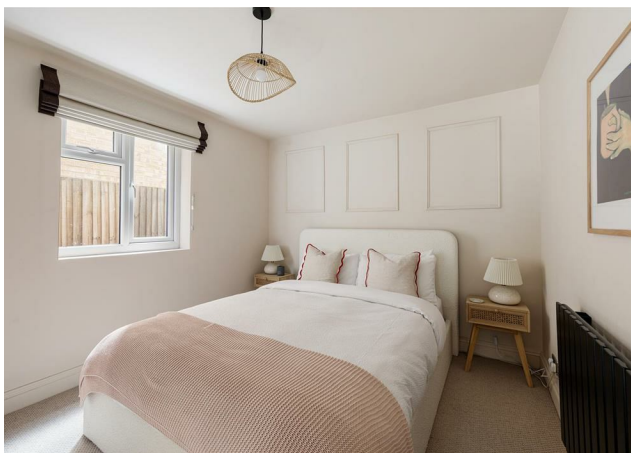
E8, E9, E5, N16, E3 & E2
hellohackney@stowbrothers.com
0208 520 3077

New Homes
newhomes@stowbrothers.com
0203 325 7227

Investment & Development
id@stowbrothers.com
0208 520 6220

Property Maintenance
propertymanagement@stowbrothers.com
0203 325 7228

STOWBROTHERS.COM
@STOWBROTHERS



REQUEST A VIEWING
0203 3691818

IF YOU LIVED HERE...

This peaceful home feels wonderfully roomy, with an open-plan kitchen and reception that maximises space with clever features like the vertical column radiator and down lights. There's plenty of space for both lounging and dining, while the sleek kitchen, complete with quartz worktops and integrated appliances, will be a joy to use. Thanks to the large sliding doors, the whole space is bathed in natural light and opens directly onto the beautifully landscaped west-facing private garden, where you'll find a spacious lawn, patio, planters and modern slated fencing. Of course, you've also got the added convenience of a driveway and private garage outside, too.

Both bedrooms are comfortable doubles, with one boasting an ensuite and a dressing room - a total game-changer. The main bathroom continues the mid-century-inspired theme, with striking tiling and a stylish walk-in shower.

You've got plenty of greenery nearby, including Elmhurst Gardens,

Epping Forest and Roding Valley - all lush in different ways.

As for amenities, South Woodford has a brilliant selection of stores, including a Waitrose and M&S, and even an Odeon cinema. Be sure to mark your calendar for every third Sunday of the month, too, when the South Woodford farmers market is held.

WHAT ELSE?

-South Woodford station is around 15 minutes on foot. From here the Central line can take you to Liverpool Street in just another 20 mins. Drivers can be on the North Circular in just a few minutes.

-Celebratory moving in meal? Head to Jones & Sons. Anyone who's been to the original restaurant in Dalston will testify that this is fine dining at its best. It's less than a mile away.

-Make the Railway Bell your new local. Just 15 minutes away, this traditional pub has a cracking drinks list, great food, friendly staff and plenty of entertainment.



A WORD FROM THE OWNER...

"We've loved our time at Fosters Close, it was our first home together and has been warm, spacious, quiet yet close enough to busy city life. We've put a lot of love into the additional spaces we've created within the home and we hope that shows."

FOLLOW US ➔ @STOWBROTHERS
STOWBROTHERS.COM