

PROPERTY AGENTS

JPKnight



7 Newlands Way, Gnosley, G10 3JF



74 Newlands Way, Cholsey

A well presented 3 storey end terrace home set within the sought after Cholsey Meadows development. Enjoying a pleasant position and access to excellent location amenities and Cholsey railway station.

The ground floor offers a welcoming layout, featuring a cloakroom, well appointed Kitchen, spacious rear Living Room/ Dining Room with French doors opening directly onto the garden. The first floor has 3 bedrooms and 2 bathrooms. The second floor has a spacious 25' room with a versatile use.

Externally the property benefits from a private rear garden and parking for two cars. There are 80 acres of communal grounds down to the river complete with a cricket pitch close by. Charges £607.00 per year.



Tenure – Freehold

Accommodation

The property is double/triple glazed with gas central heating to radiators and a Titan air circulation ventilation system.

Entrance Hall: Wood style floor, radiator, stairs to landing.

Cloakroom: White 2-piece suite, window to the front, radiator, down lighters, wood style flooring.

Kitchen: Window to the front, range of storage units, wooden worktops, gas hob, extractor hood and stainless-steel back plate, electric oven, integrated dishwasher, washing machine and fridge/freezer, wood style floor, down lighters, radiator and gas boiler.





Living/Dining Room: A bright spacious room with 9' ceilings featuring French doors flanked by windows to the garden and two feature windows to the rear, wood style flooring, 3 radiators and under stair cupboard.

First Floor Landing: Window to side, radiator and airing cupboard.

Bedroom 2: Window to the front, wardrobes, radiator.

En-Suite Shower Room: White 3-piece suite including large shower cubicle, tiling, wood style flooring, radiator, downlighters.

Bedroom 3: Rear window, radiator.

Bedroom 4: Windows to rear and side, radiator.

Bathroom: White 3-piece suite, tiling, large mirror, wood style floor, radiator.

Second Floor Landing: Eaves cupboard housing Titan air circulation unit and storage space.

Bedroom 1/Family Room: Juliette balcony to the front, Velux window to the rear, storage cupboard and 2 radiators.

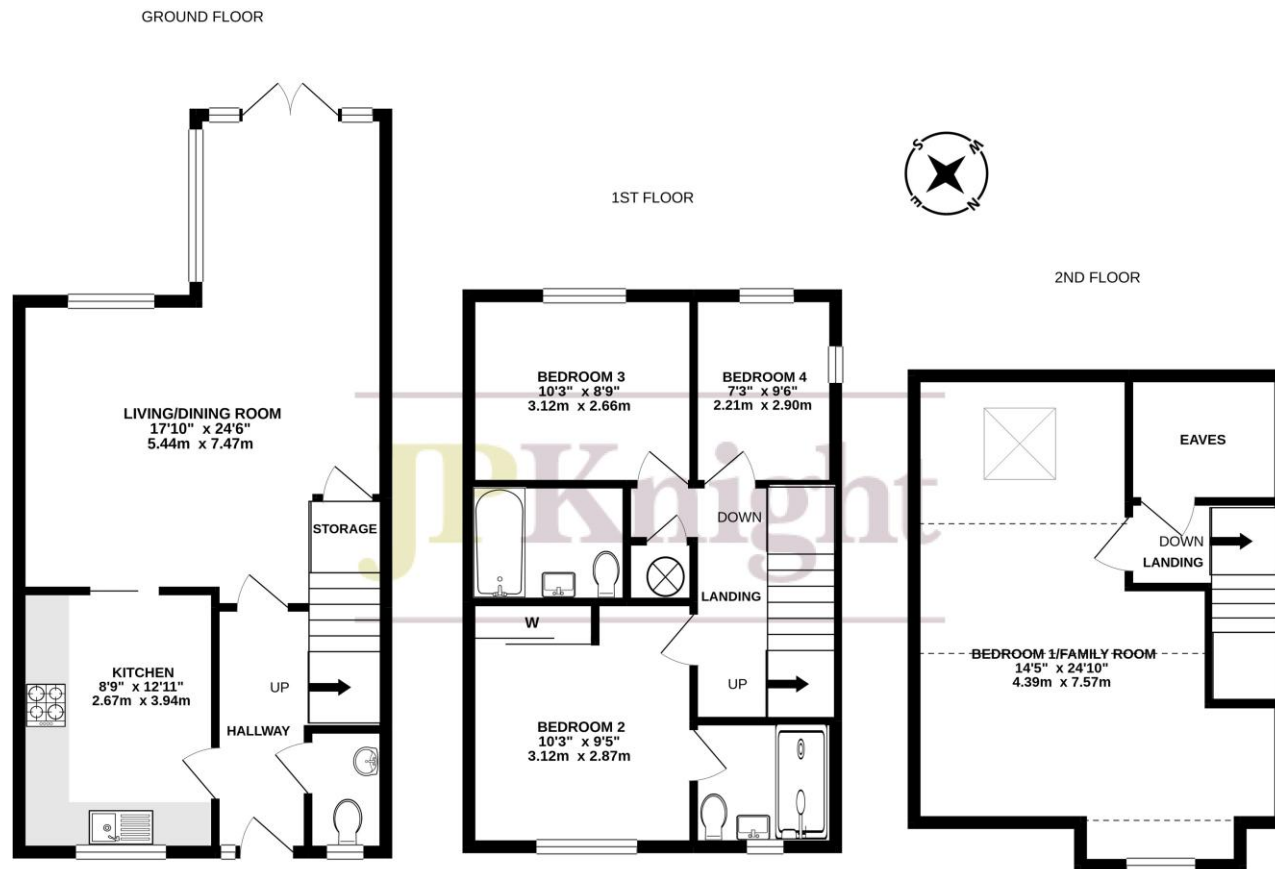
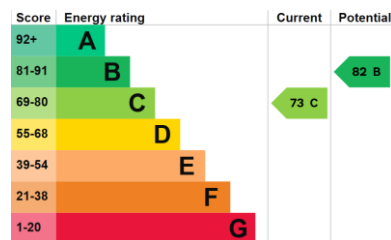
Outside

The property has two allocated parking spaces close by.

To the Rear: South-West facing garden extending to approx. 45' abutting mature trees at the rear and farmland beyond. There is a paved area leading to lawn with flower/shrub and bamboo borders, timber fencing and gated rear access to the side and rear.



Turn left from our offices into St Martin's Street, through the one- way system and out on the Reading Road, follow the road across the roundabout onto the A329 and continue for 1.6 miles, then turn 3rd left into Ferry Lane. Turn first left into Newlands Way and towards the end turn right opposite Villa Close, this will lead to the property.



TOTAL FLOOR AREA : 1366sq.ft. (126.9 sq.m.) approx.

Whilst every attempt has been made to ensure the accuracy of the floorplan contained here, measurements of doors, windows, rooms and any other items are approximate and no responsibility is taken for any error, omission or mis-statement. This plan is for illustrative purposes only and should be used as such by any prospective purchaser. The services, systems and appliances shown have not been tested and no guarantee as to their operability or efficiency can be given.

Made with Metropix ©2021

Made with Metropix ©202