

---

## FARRIERS REACH

---



ALLISON  
HOMES

# Farriers Reach

## Development Plan

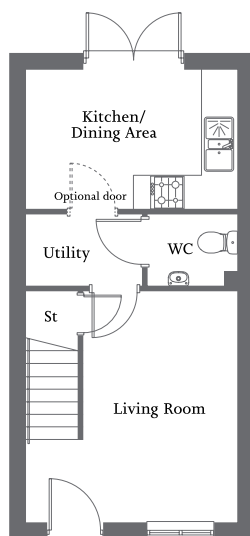


Every care has been taken to ensure the accuracy of these particulars, but the contents shall not form part of any contract and the vendors reserve the right to alter specification and/or design without notice. The site plan is drawn to show the relative position of individual properties. NOT TO SCALE. This is a two dimensional drawing and will not show land contours and gradients, boundary treatments or local authority street lighting. Footpaths subject to change. Purchasers are advised to check with our Sales Executives on the home of their choice. The site details and individual house types may be subject to planning variation. The landscaping shown on the computer-generated illustration of the development is for illustration purposes only.



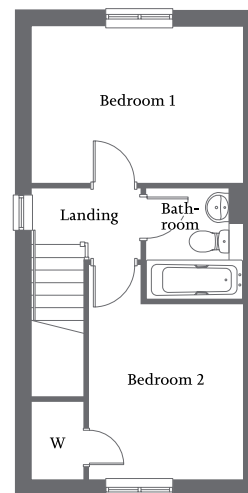


| Front aspect living room | Kitchen/dining area with French Doors |  
| Fitted wardrobe to bedroom two | One further bedroom and family bathroom | Garage and allocated parking space(s) |



Ground Floor

Living Room	4.09m x 3.72m	13'6" x 12'2"
Kitchen/ Dining Area	3.72m x 2.47m	12'2" x 8'1"
Utility	2.06m x 1.27m	6'9" x 4'2"

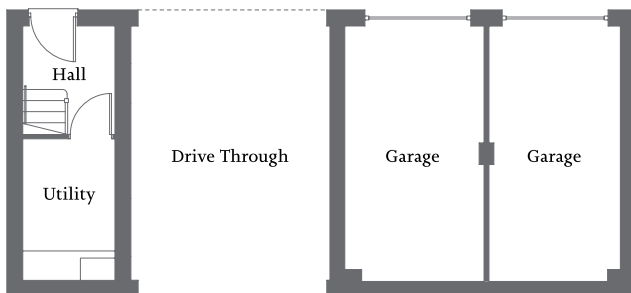


First Floor

Bedroom 1	3.72m x 2.77m	12'2" x 9'1"
Bedroom 2	3.09m x 2.71m	10'1" x 8'10"
Bathroom	1.97m x 1.70m	6'5" x 5'7"

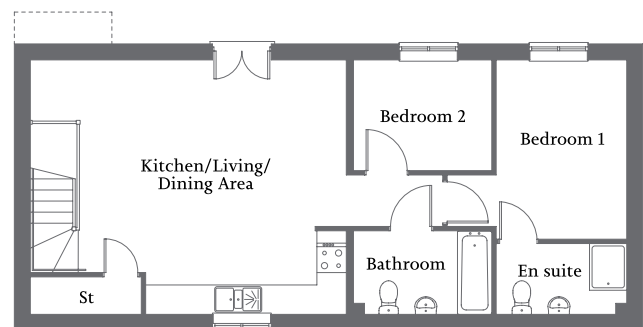


| Open-plan kitchen/living/dining area with Juliet balcony | Ground floor utility |  
| En suite to bedroom 1 | One further bedroom and family bathroom | Garage and allocated parking |



Ground Floor

Utility	2.87m x 1.88m	9'5" x 6'2"
---------	---------------	-------------



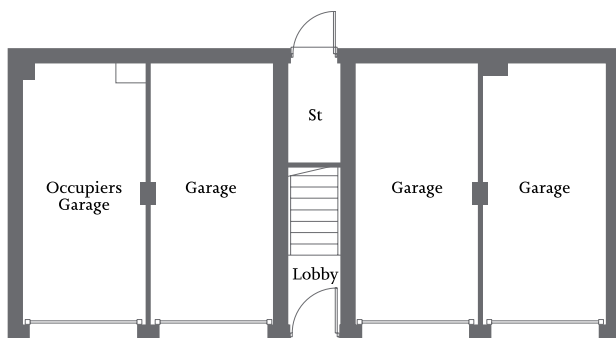
First Floor

Kitchen/Living/ Dining Area	6.44m x 5.19m	21'1" x 17'0"
Bedroom 1	3.64m x 2.65m	11'11" x 8'8"
En suite	2.65m x 1.43m	8'8" x 4'8"
Bedroom 2	2.81m x 2.24m	9'2" x 7'4"
Bathroom	2.81m x 1.69m	9'2" x 5'6"



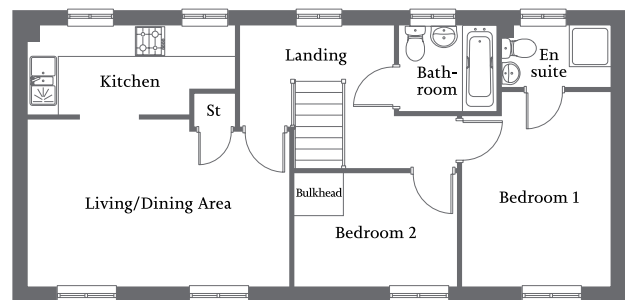


- | Open-plan kitchen/living/dining area | En suite to Bedroom 1 |  
| One further bedroom and family bathroom | Garage | Allocated parking spaces |



### Ground Floor

Garage	5.21m x 2.46m	17'1" x 8'1"
--------	---------------	--------------

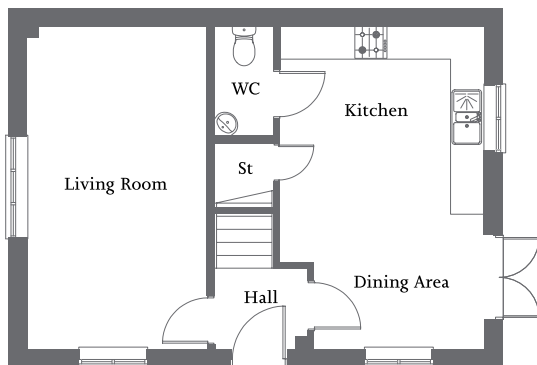


### First Floor

Living/Dining Area	5.22m x 3.33m	17'1" x 10'11"
Kitchen	4.14m x 1.76m	13'7" x 5'9"
Bedroom 1	3.88m x 2.96m	12'8" x 9'8"
En suite	2.16m x 1.22m	7'1" x 4'0"
Bedroom 2	3.26m x 2.26m	10'8" x 7'5"
Bathroom	1.97m x 1.70m	6'5" x 5'7"

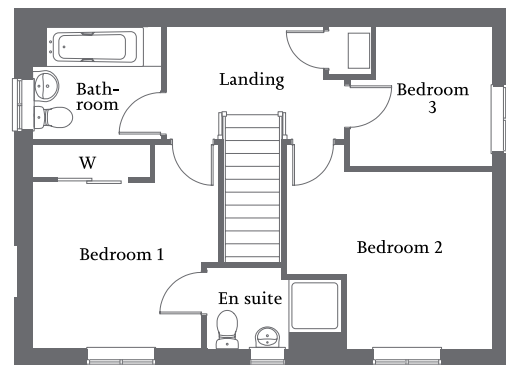


- | Dual aspect living room | Kitchen/dining area with French Doors |
- | Bedroom 1 with en suite and fitted wardrobe | Two further bedrooms and family bathroom | Allocated parking spaces |



#### Ground Floor

Living Room	5.64m x 3.15m	18'6" x 10'4"
Kitchen/ Dining Area	5.64m x 3.58m	18'6" x 11'9"



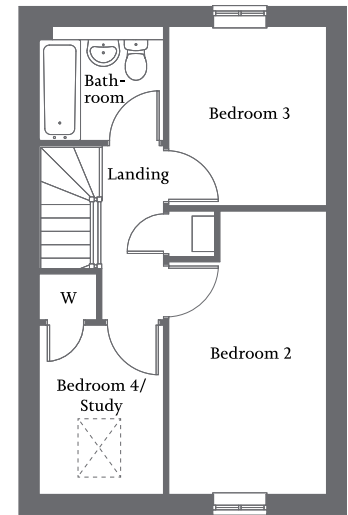
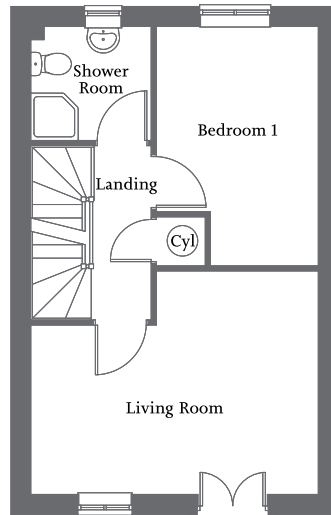
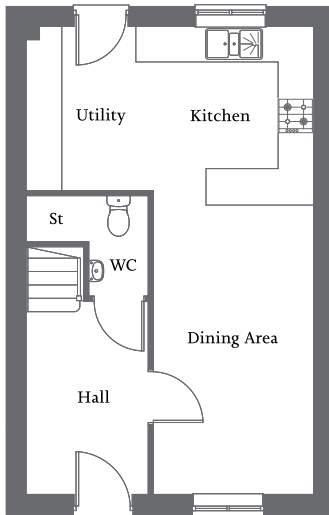
#### First Floor

Bedroom 1 (incl. wardrobe)	3.57m x 3.20m	11'9" x 10'6"
En suite	2.33m x 1.43m	7'8" x 4'8"
Bedroom 2	3.59m x 3.09m	11'9" x 10'2"
Bedroom 3	2.49m x 2.43m	8'2" x 8'0"
Bathroom	2.19m x 1.95m	7'2" x 6'5"





| Front aspect living room with Juliet balcony | Open-plan kitchen/dining/utility | Bedroom 1 and shower room to first floor |  
| Three further bedrooms and family bathroom to second floor | Single garage and allocated parking space |



#### Ground Floor

Kitchen/Utility	4.86m x 2.75m	15'11" x 9'0"
Dining Area	4.95m x 2.70m	16'2" x 6'9"

#### First Floor

Living Room	4.86m x 3.75m	15'11" x 12'3"
Bedroom 1	4.03m x 2.68m	13'3" x 8'10"
Shower Room	2.02m x 1.91m	6'7" x 6'3"

#### Second Floor

Bedroom 2	4.76m x 2.66m	15'7" x 8'8"
Bedroom 3	3.01m x 2.66m	9'10" x 8'8"
Bedroom 4/ Study	2.84m x 2.08m	9'3" x 6'9"
Bathroom	2.08m x 1.91m	6'9" x 6'3"

**Farriers Reach**  
Off Main Road, Barleythorpe,  
Oakham, Rutland LE15 7EE

Tel **07484 504 718**  
Email **[newhomes@allison-homes.co.uk](mailto:newhomes@allison-homes.co.uk)**  
**[www.allison-homes.co.uk](http://www.allison-homes.co.uk)**

