

MAYFIELDS

Saltcoats · Ayrshire



Persimmon
Together, we make a home.

TOGETHER, WE MAKE A HOME.

When it comes to designing a new development, we apply the same philosophy every time – make it unique, make it personal. That’s because we understand your new home is more than simply bricks and mortar. It’s a private place of sanctuary where we hope you’ll laugh, entertain and escape for many years to come.

We promise to provide:

- ✓ An expertly-designed home that’s sympathetic to the area
- ✓ A dedicated customer care helpline
- ✓ Two-year Persimmon defect cover
- ✓ Ten-year insurance-backed new homes warranty
- ✓ Energy-efficient features that promote sustainable living
- ✓ The creative freedom to personalise your home
- ✓ Landscaping schemes to enhance your surroundings

HERE TO HELP

One of the best things about buying a new-build home are the amazing offers and schemes you could benefit from.



PART EXCHANGE

Need to sell your home? We could be your buyer. Save money and time and stay in your home until your new one completes.



HOME CHANGE

Sell your current home with our support. We’ll take care of estate agent fees and offer expert advice to help get you moving.



OUR STAR RATING

We’ve been awarded a five star rating by the Home Builders Federation in their 2022 survey.



OUR PLEDGE TO YOU

We believe keeping you fully informed throughout the home-buying process is key to making the whole experience enjoyably simple. That's why we created The Persimmon Pledge. It's our way of making sure you receive exceptional customer service and relevant communications before, during and after you've moved in.

As part of the pledge, we carry out a comprehensive on every new home we build to ensure everything meets our exacting standards. Once you've picked up the keys, we'll give you a few days to settle in before getting in touch to check everything's okay and to answer any questions you may have. We're happy to hear from you at any point however, so always contact us if you have any issues.



Becoming part of the scenery

While we may have over 400 locations around the UK, we go to great lengths to adopt a local approach when it comes to building your home. So when we provide you with the local specification, you can be confident it'll be a perfect fit for the area in terms of the style of architecture and choice of materials. We also incorporate local scenery such as trees and lakes, and work with ecologists to protect the landscape and biodiversity.



Always by your side

Your safety will always be our priority, which is why we'll give you an exclusive emergency cover number when you move in which you can call in the unlikely event of a complete power failure, gas leak, water escape or severe drain blockage. And don't forget, when you buy a new home with us you'll benefit from our **two-year Persimmon warranty**, which runs alongside a **ten-year insurance-backed new homes warranty**.



Mayfields

Saltcoats · Ayrshire



Mayfields at a glance:

- 🕒 Beautiful range of 2-bedroom apartments and 2, 3, 4 & 5-bedroom homes
- 🕒 Stunning coastal location
- 🕒 Wealth of local amenities
- 🕒 Good transport links to Ayrshire, Paisley and Glasgow

FANTASTIC CHOICE OF HOMES WITHIN WALKING DISTANCE TO THE BEACH

Mayfields is our new collection of homes located in the popular town of Saltcoats on the west coast of North Ayrshire. Offering a range of two-bedroom apartments and two, three, four and five-bedroom homes.

Mayfields offers a fantastic range of homes set in an attractive location with excellent views towards the Firth of Clyde and the Isle of Arran whilst also being situated close to local schools, shops and amenities.

There's an abundance of great local leisure facilities in the area including Saltcoats Beach and Ardrossan South Beach, both under 1.5 miles from Mayfields. There's also Auchendarvie Leisure Centre, Premier Leisure Cinema and Auchendarvie Golf Complex nearby – meaning there's an activity to suit everyone within this popular area of Saltcoats.

There's a great range of local amenities within easy reach of Mayfields including Tesco Metro, Sainsburys, Specsavers and Saltcoats Health Centre. Further afield there is Rivergate Shopping Centre which offers a range of high street brands including New Look, JD Sports, Wilko, Clarks and Costa to name a few – perfect for a shopping spree.

Always in reach

The site also benefits from great transport links and easy access to the centre of Stevenston, Saltcoats and Ardrossan as well as the A78 which connects the Three Towns with Kilwinning and Irvine. Glasgow is also within easy reach, with regular trains to Glasgow Central and the new Dalry Bypass making commuting to Glasgow and Paisley even easier.

With its range of homes to suit first time buyers through to larger families, plus its fantastic coastal location and convenient transport links, Mayfields is the ideal location to call home.

JUMP IN THE CAR AND START EXPLORING:

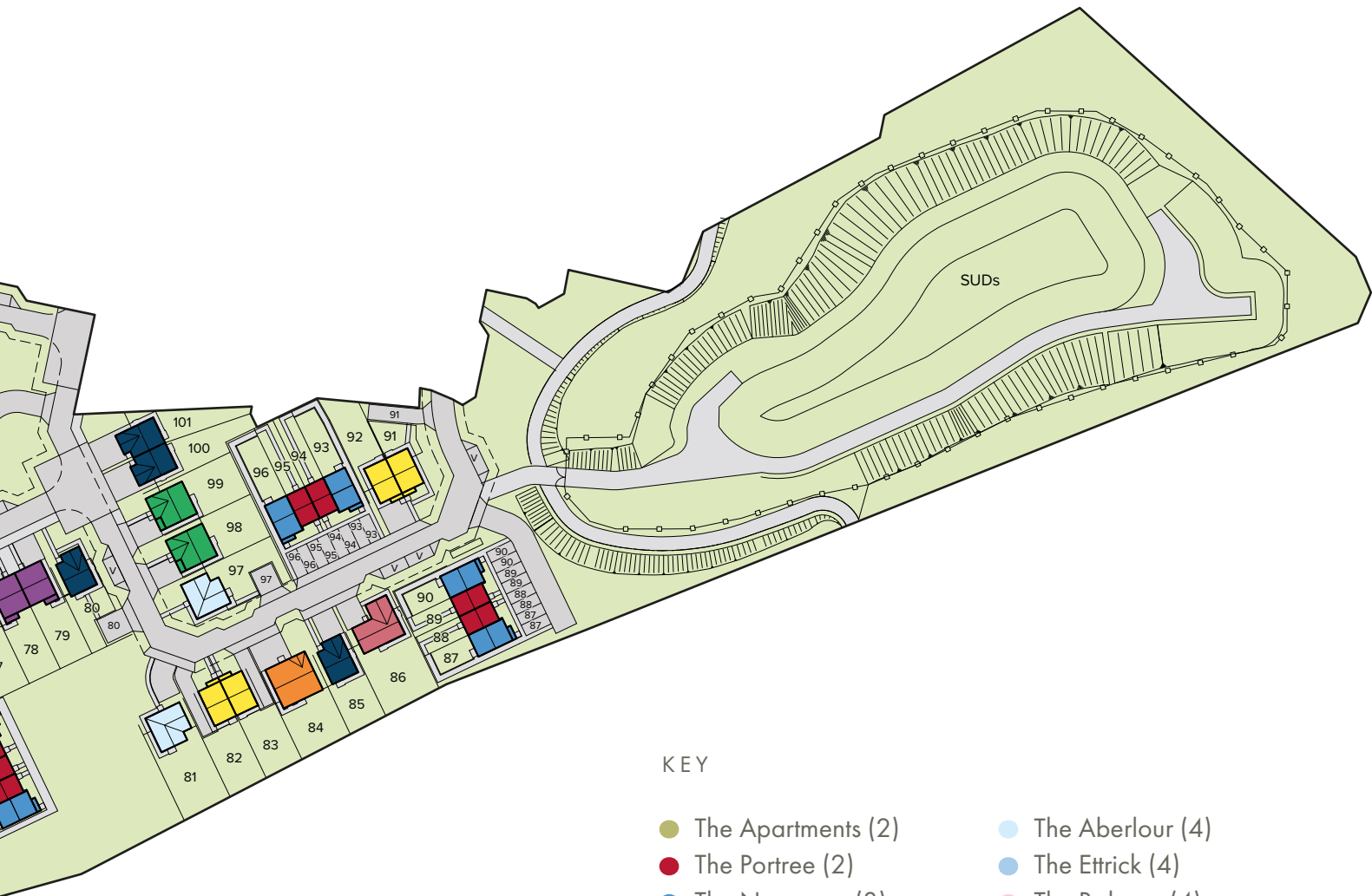
- A78 (to Irvine) | 1.3 miles
- Saltcoats Train Station | 1.1 miles
- Ardrossan South Beach Train Station | 2 miles
- Irvine | 8.3 miles
- Kilmarnock | 14.2 miles
- Glasgow | 31.5 miles



SITE PLAN

MAYFIELDS





KEY

- | | |
|----------------------|----------------------------------|
| ● The Apartments (2) | ● The Aberlour (4) |
| ● The Portree (2) | ● The Ettrick (4) |
| ● The Newmore (3) | ● The Balerno (4) |
| ● The Newton (3) | ● The Lismore (4) |
| ● The Ardbeg (3) | ● The Thornwood (5) |
| ● The Kearn (3) | ● The Whithorn (4) |
| ● The Elgin (3) | ● The Warriston (5) |
| ● The Leith (4) | (3) indicates number of bedrooms |

This site layout is intended for illustrative purposes only, and may be subject to change, for example, in response to market demand, ground conditions or technical and planning reasons. Trees, planting and public open space shown are indicative, actual numbers and positions may vary. This site plan does not form any part of a warranty or contract. Further information is available from a site sales advisor.



T BLOCK

Two bedroom apartments



The T Block Apartments, featuring the George, the Yarrow and the Fairfield, offer a range of spacious two bedroom apartments with an ensuite to bedroom one. Each apartment offers spacious layouts allowing greater flexibility benefitting those working from home, downsizing and first time buyers.

The Fairfield



The Yarrow

Ground floor

The George

This information is for guidance only and does not form any part of any contract or constitute a warranty. Illustrations are of typical elevations and may vary. Floor plans are not drawn to scale and window positions may vary. Room dimensions are subject to a +/- 50mm (2") tolerance and are based on the maximum dimensions in each room. Please consult your sales advisor on site for specific elevations, room dimensions and external finishes. The EPC ratings are estimated and vary between house types, orientation and developments.

The Fairfield

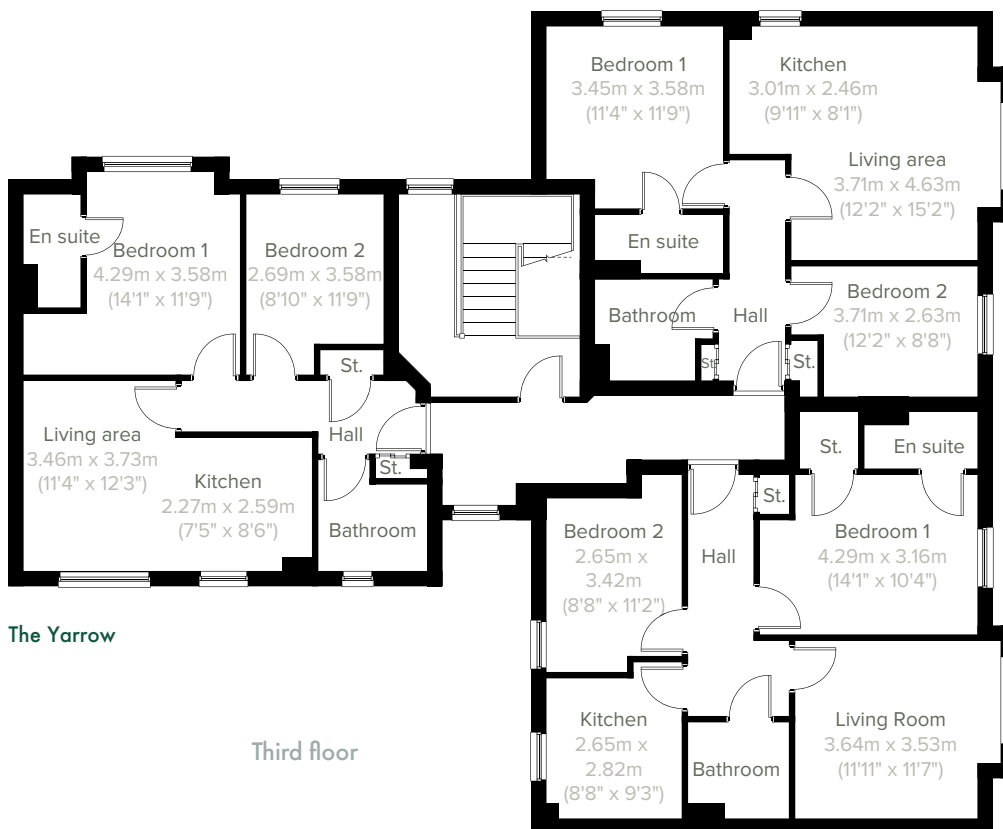


The Yarrow

First floor and second floor

The George

The Fairfield



The Yarrow

Third floor

The George

This information is for guidance only and does not form any part of any contract or constitute a warranty. Illustrations are of typical elevations and may vary. Floor plans are not drawn to scale and window positions may vary. Room dimensions are subject to a +/- 50mm (2") tolerance and are based on the maximum dimensions in each room. Please consult your sales advisor on site for specific elevations, room dimensions and external finishes. The EPC ratings are estimated and vary between house types, orientation and developments.

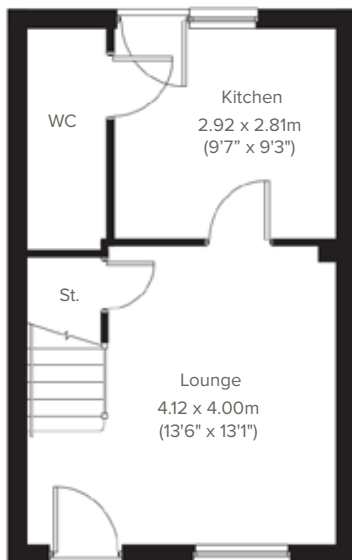


PORTREE
Two bedroom home

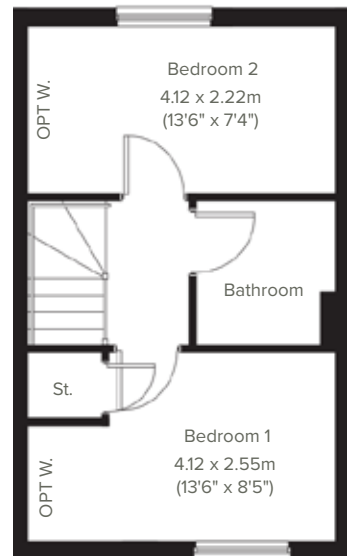


The energy efficiency ratings are an average for each house type and individual plots may vary.

Perfectly-proportioned, The Portree has a separate kitchen with a door leading into the garden, two double bedrooms, family bathroom and a good-sized lounge. Ideal if you are a first-time buyer looking for a fresh modern home you can make your own.



Ground floor



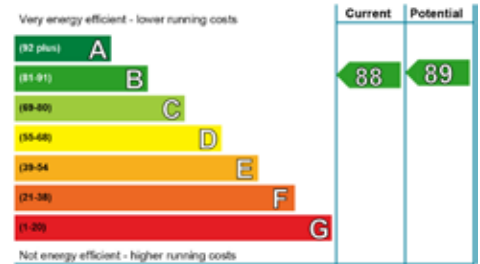
First floor

This information is for guidance only and does not form any part of any contract or constitute a warranty. Illustrations are of typical elevations and may vary. Floor plans are not drawn to scale and window positions may vary. Room dimensions are subject to a +/- 50mm (2") tolerance and are based on the maximum dimensions in each room. Please consult your sales advisor on site for specific elevations, room dimensions and external finishes. The EPC ratings are estimated and vary between house types, orientation and developments.



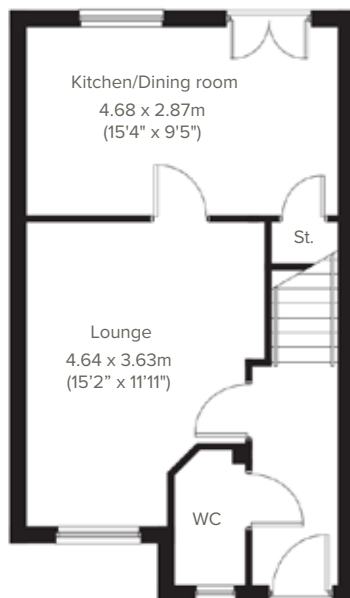
NEWMORE

Three bedroom home

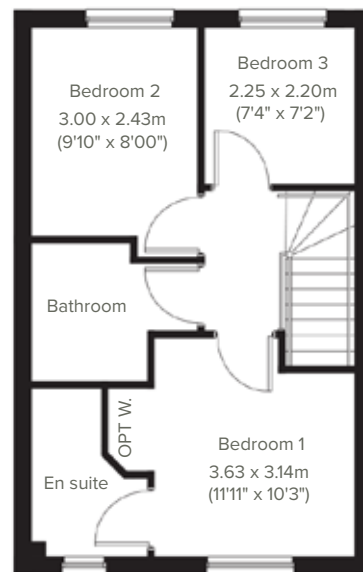


The energy efficiency ratings are an average for each house type and individual plots may vary.

Perfectly-proportioned, The Newmore has a stylish open plan kitchen/dining room with French doors leading into the garden, a spacious lounge and handy storage cupboard. The first floor is home to three good sized bedrooms - bedroom one with en suite and a family bathroom. Ideal if you're a first-time buyer looking for a fresh modern home you can make your own.



Ground floor



First floor

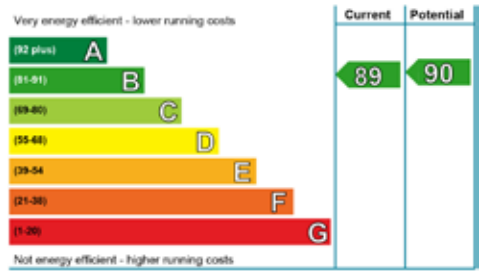
Window not applicable if mid terraced

This information is for guidance only and does not form any part of any contract or constitute a warranty. Illustrations are of typical elevations and may vary. Floor plans are not drawn to scale and window positions may vary. Room dimensions are subject to a +/- 50mm (2") tolerance and are based on the maximum dimensions in each room. Please consult your sales advisor on site for specific elevations, room dimensions and external finishes. The EPC ratings are estimated and vary between house types, orientation and developments.



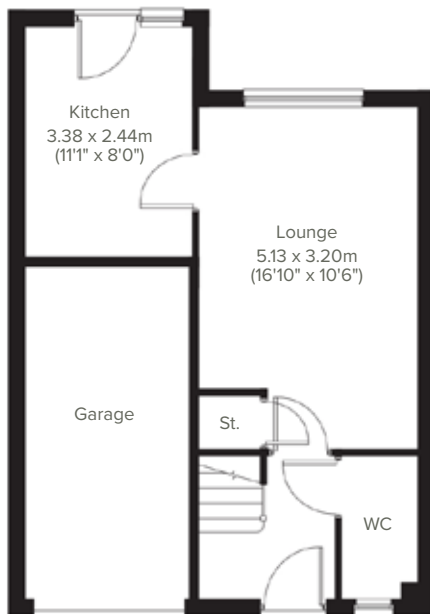
NEWTON

Three bedroom home

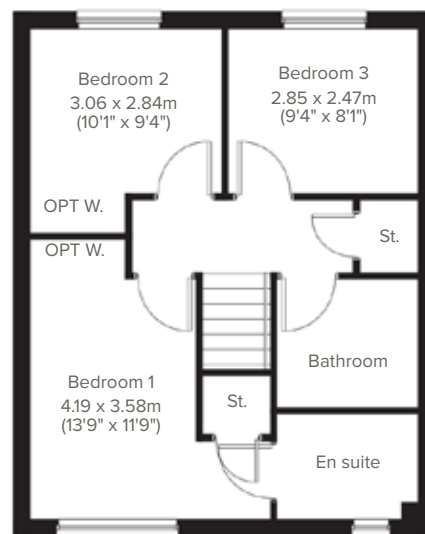


The energy efficiency ratings are an average for each house type and individual plots may vary.

The Newton is a three-bedroom family home with spacious lounge and separate kitchen with a door leading into the garden. There's also a downstairs WC, handy storage cupboard and garage. The first floor benefits from three good sized bedrooms, family bathroom, storage cupboard and bedroom one with en suite .



Ground floor



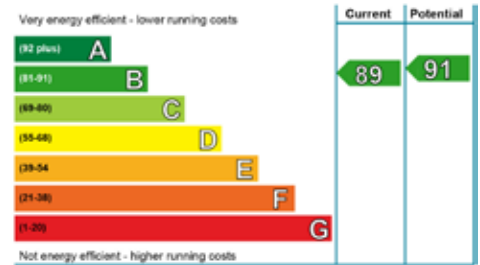
First floor

This information is for guidance only and does not form any part of any contract or constitute a warranty. Illustrations are of typical elevations and may vary. Floor plans are not drawn to scale and window positions may vary. Room dimensions are subject to a +/- 50mm (2") tolerance and are based on the maximum dimensions in each room. Please consult your sales advisor on site for specific elevations, room dimensions and external finishes. The EPC ratings are estimated and vary between house types, orientation and developments.



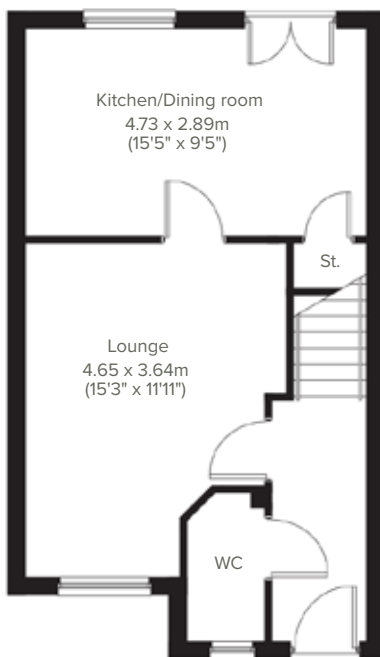
ARDBEG

Three bedroom home

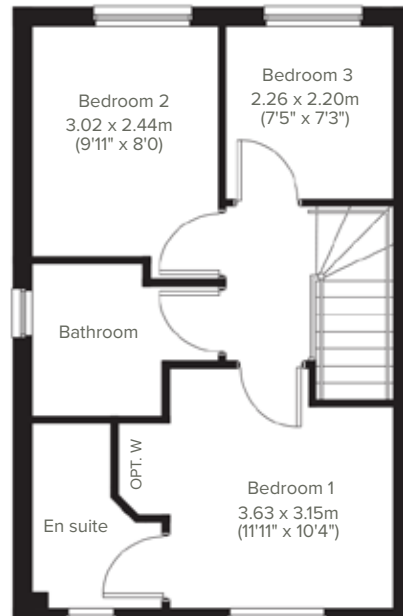


The energy efficiency ratings are an average for each house type and individual plots may vary.

The popular Ardbeg is a three-bedroom family home with bright and modern open plan kitchen/dining room with French doors leading into the garden and a spacious front aspect lounge. The downstairs WC, handy storage cupboard and en suite to bedroom one means it ticks all the boxes for practical family living.



Ground floor



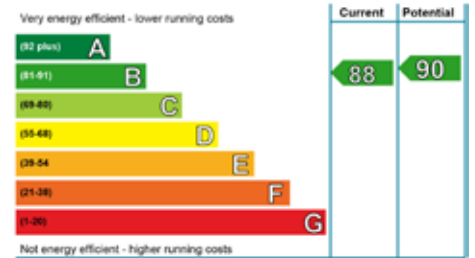
First floor

This information is for guidance only and does not form any part of any contract or constitute a warranty. Illustrations are of typical elevations and may vary. Floor plans are not drawn to scale and window positions may vary. Room dimensions are subject to a +/- 50mm (2") tolerance and are based on the maximum dimensions in each room. Please consult your sales advisor on site for specific elevations, room dimensions and external finishes. The EPC ratings are estimated and vary between house types, orientation and developments.



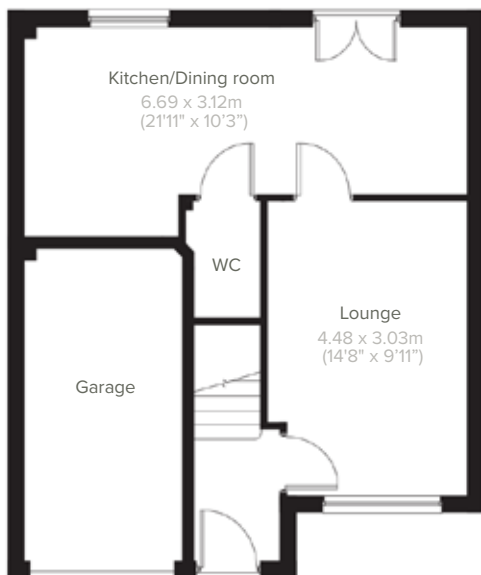
KEARN

Three bedroom home

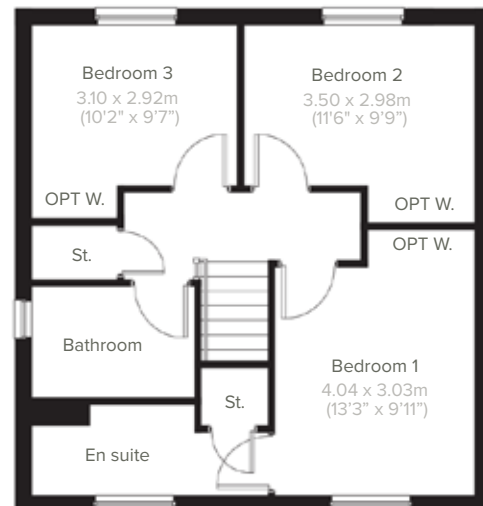


The energy efficiency ratings are an average for each house type and individual plots may vary.

Ideal for family life, The Kearn is a beautiful three-bedroom home. The open plan kitchen/dining room is spacious and bright with French doors leading onto the garden - perfect for gatherings with friends and family. It comes complete with an integral single garage, downstairs WC and en suite to bedroom one.



Ground floor

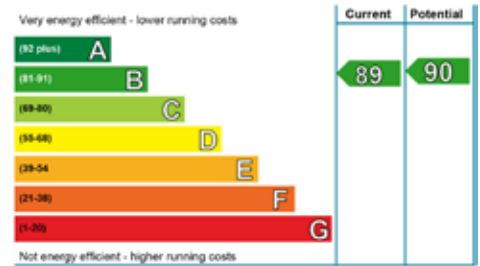


First floor

This information is for guidance only and does not form any part of any contract or constitute a warranty. Illustrations are of typical elevations and may vary. Floor plans are not drawn to scale and window positions may vary. Room dimensions are subject to a +/- 50mm (2") tolerance and are based on the maximum dimensions in each room. Please consult your sales advisor on site for specific elevations, room dimensions and external finishes. The EPC ratings are estimated and vary between house types, orientation and developments.

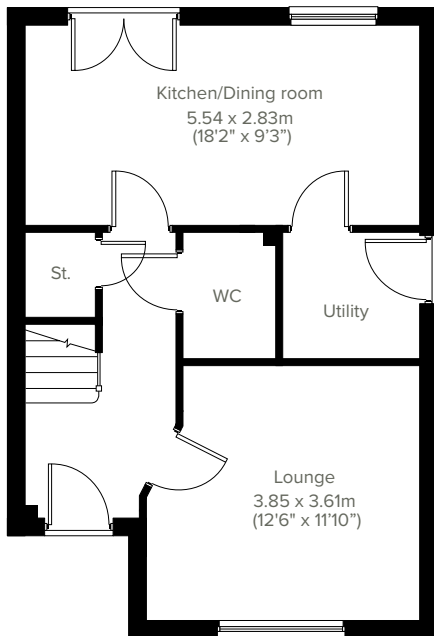


ELGIN SEMI DETACHED
Three bedroom home

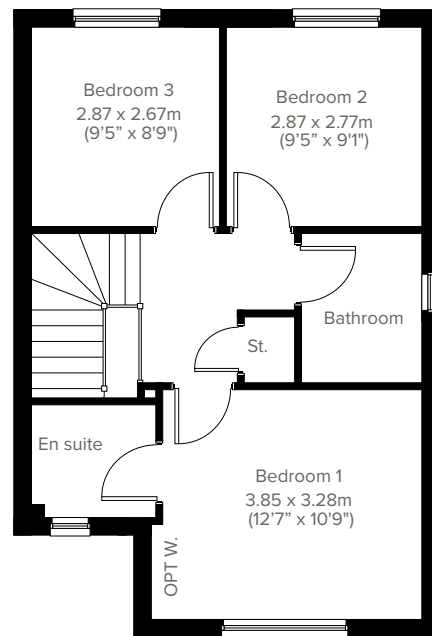


The energy efficiency ratings are an average for each house type and individual plots may vary.

Enjoy the best of modern living in this popular three-bedroom home which benefits from a stylish open plan kitchen/dining room with French doors leading into the garden. The Elgin’s bright front aspect lounge, separate utility room, handy storage cupboard and downstairs WC complete the ground floor. Upstairs, bedroom one has an en suite and there’s a good-sized family bathroom and further storage.



Ground floor



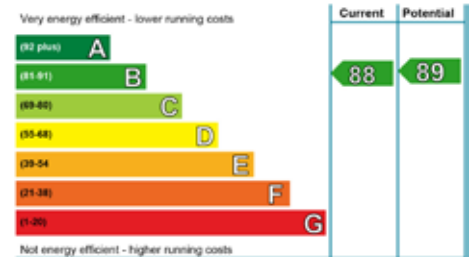
First floor

This information is for guidance only and does not form any part of any contract or constitute a warranty. Illustrations are of typical elevations and may vary. Floor plans are not drawn to scale and window positions may vary. Room dimensions are subject to a +/- 50mm (2") tolerance and are based on the maximum dimensions in each room. Please consult your sales advisor on site for specific elevations, room dimensions and external finishes. The EPC ratings are estimated and vary between house types, orientation and developments.



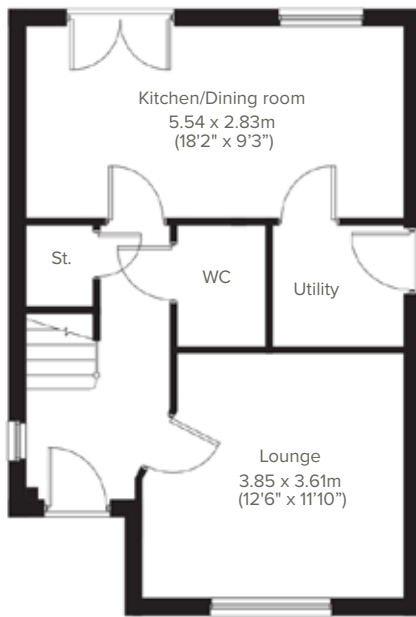
ELGIN

Three bedroom home

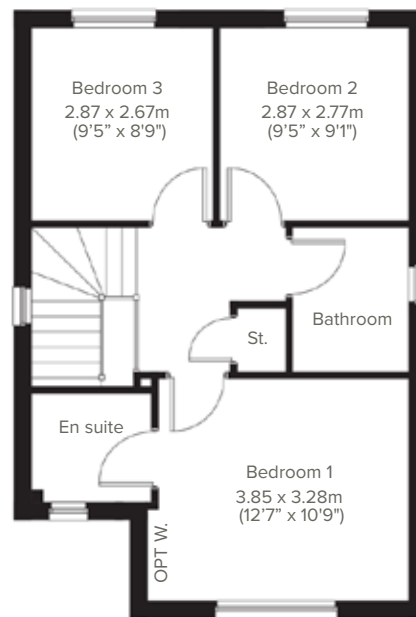


The energy efficiency ratings are an average for each house type and individual plots may vary.

Enjoy the best of modern living in this popular three-bedroom home which benefits from a stylish open plan kitchen/dining room with French doors leading into the garden. The Elgin's bright front aspect lounge, separate utility room, handy storage cupboard and downstairs WC complete the ground floor. Upstairs, bedroom one features an en suite, there is a good-sized family bathroom and further storage.



Ground floor



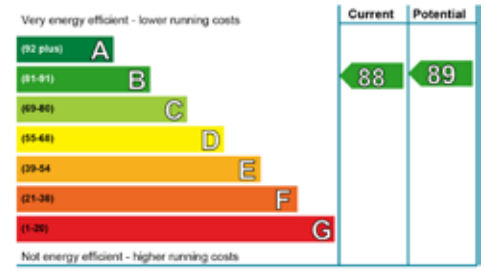
First floor

This information is for guidance only and does not form any part of any contract or constitute a warranty. Illustrations are of typical elevations and may vary. Floor plans are not drawn to scale and window positions may vary. Room dimensions are subject to a +/- 50mm (2") tolerance and are based on the maximum dimensions in each room. Please consult your sales advisor on site for specific elevations, room dimensions and external finishes. The EPC ratings are estimated and vary between house types, orientation and developments.



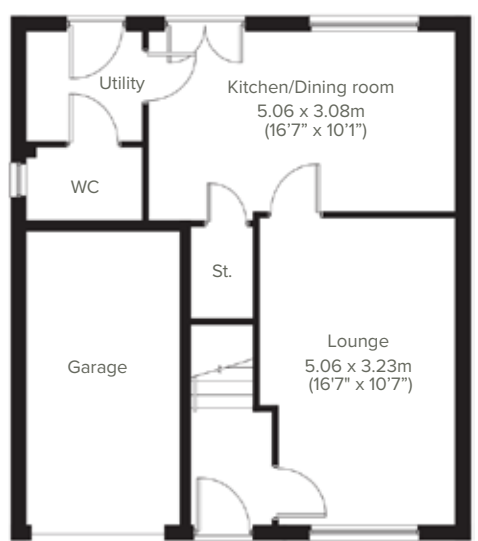
LEITH

Four bedroom home

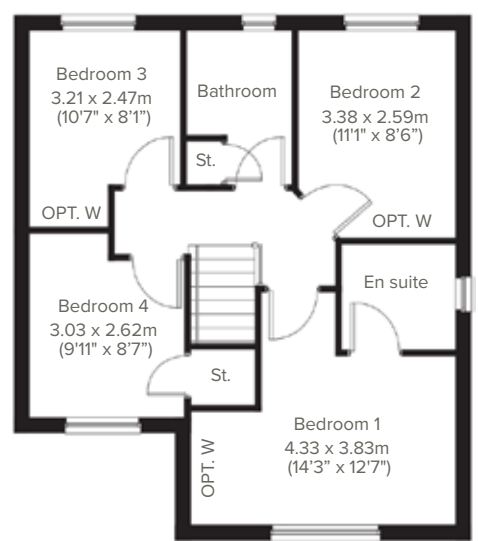


The energy efficiency ratings are an average for each house type and individual plots may vary.

The Leith is a four-bedroom home offering open plan living. The light and airy kitchen/dining room enjoys an open aspect through French doors to the rear garden. There's a bright front-aspect lounge, a downstairs utility room, WC, storage cupboard and an adjoining integral garage. Upstairs there are four good-sized bedrooms with a spacious bedroom one benefiting from an en-suite, plus a modern fitted family bathroom.



Ground floor



First floor

This information is for guidance only and does not form any part of any contract or constitute a warranty. Illustrations are of typical elevations and may vary. Floor plans are not drawn to scale and window positions may vary. Room dimensions are subject to a +/- 50mm (2") tolerance and are based on the maximum dimensions in each room. Please consult your sales advisor on site for specific elevations, room dimensions and external finishes. The EPC ratings are estimated and vary between house types, orientation and developments.



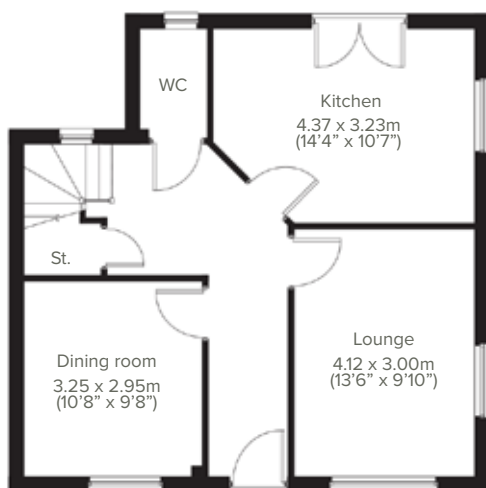
ABERLOUR

Four bedroom home

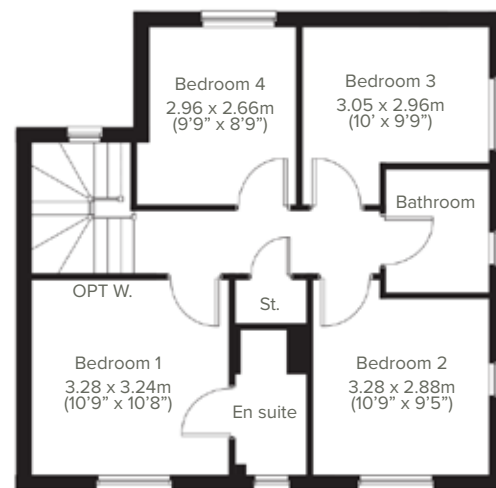


The energy efficiency ratings are an average for each house type and individual plots may vary.

A perfectly-proportioned detached home, The AberLOUR is a popular choice with families. There's a bright dual aspect lounge, separate dining room and separate kitchen as well as a downstairs WC. Upstairs there are four bedrooms - bedroom one has an en suite - a large family-sized bathroom and a storage cupboard.



Ground floor



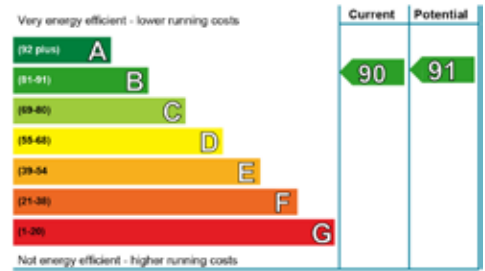
First floor

This information is for guidance only and does not form any part of any contract or constitute a warranty. Illustrations are of typical elevations and may vary. Floor plans are not drawn to scale and window positions may vary. Room dimensions are subject to a +/- 50mm (2") tolerance and are based on the maximum dimensions in each room. Please consult your sales advisor on site for specific elevations, room dimensions and external finishes. The EPC ratings are estimated and vary between house types, orientation and developments.



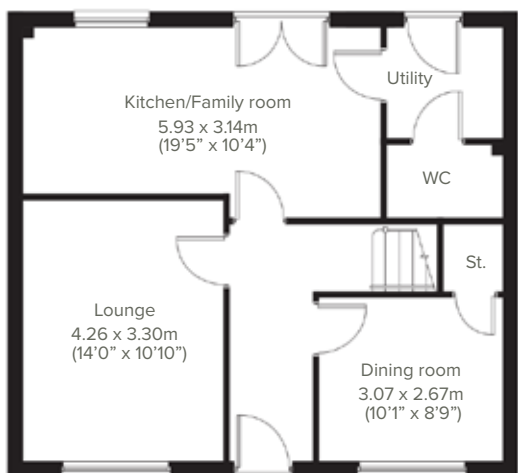
ETTRICK

Four bedroom home

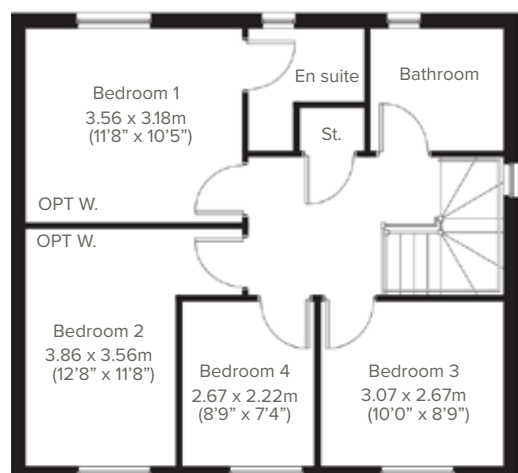


The energy efficiency ratings are an average for each house type and individual plots may vary.

A popular family home, The Ettrick ticks all the boxes. The modern and stylish open plan kitchen/family room is perfect for spending time as a family and entertaining. There is also a well-proportioned lounge, separate dining room, downstairs storage cupboard, WC and handy utility with outside access. Upstairs there are four bedrooms - bedroom one has an en suite - a large family-sized bathroom and a storage cupboard.



Ground floor



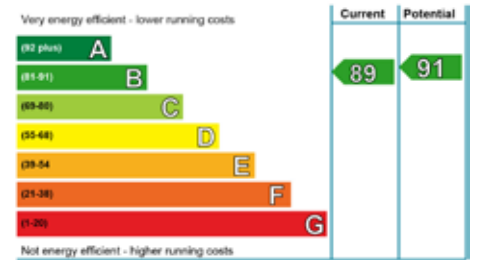
First floor

This information is for guidance only and does not form any part of any contract or constitute a warranty. Illustrations are of typical elevations and may vary. Floor plans are not drawn to scale and window positions may vary. Room dimensions are subject to a +/- 50mm (2") tolerance and are based on the maximum dimensions in each room. Please consult your sales advisor on site for specific elevations, room dimensions and external finishes. The EPC ratings are estimated and vary between house types, orientation and developments.



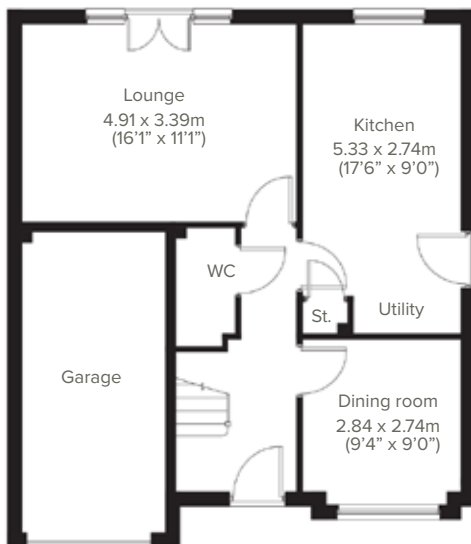
BALERNO

Four bedroom home

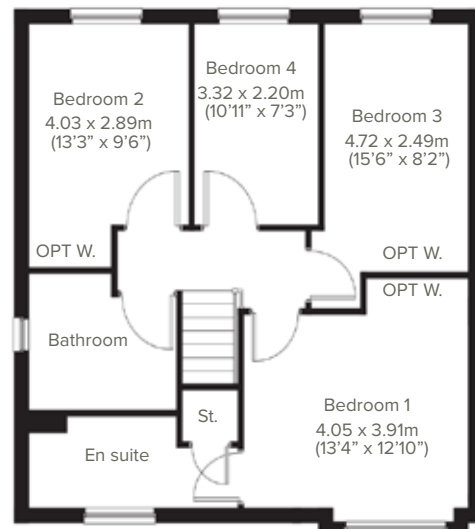


The energy efficiency ratings are an average for each house type and individual plots may vary.

Ideal for family life, the Balerno is a beautiful four bedroom home. The open plan kitchen/utility is spacious and bright with garden access. The lounge benefits from French doors leading to the garden. There is a separate dining room, integral garage, downstairs WC and handy storage cupboards. Upstairs there are four good sized bedrooms - bedroom one with en suite and a spacious family bathroom.



Ground floor



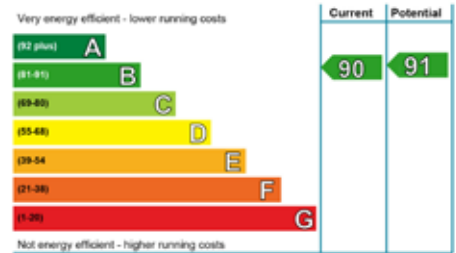
First floor

This information is for guidance only and does not form any part of any contract or constitute a warranty. Illustrations are of typical elevations and may vary. Floor plans are not drawn to scale and window positions may vary. Room dimensions are subject to a +/- 50mm (2") tolerance and are based on the maximum dimensions in each room. Please consult your sales advisor on site for specific elevations, room dimensions and external finishes. The EPC ratings are estimated and vary between house types, orientation and developments.



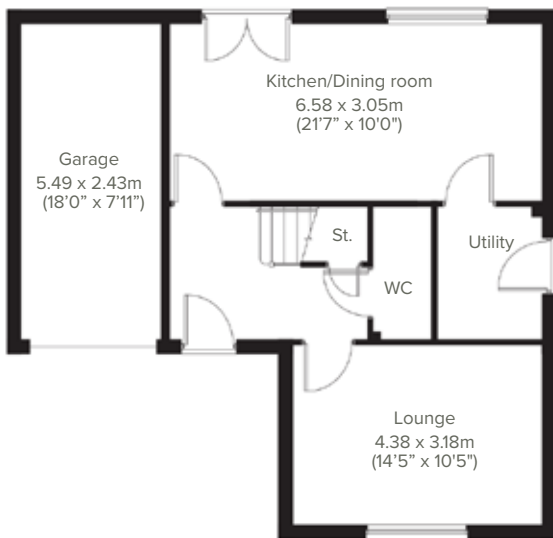
LISMORE

Four bedroom home

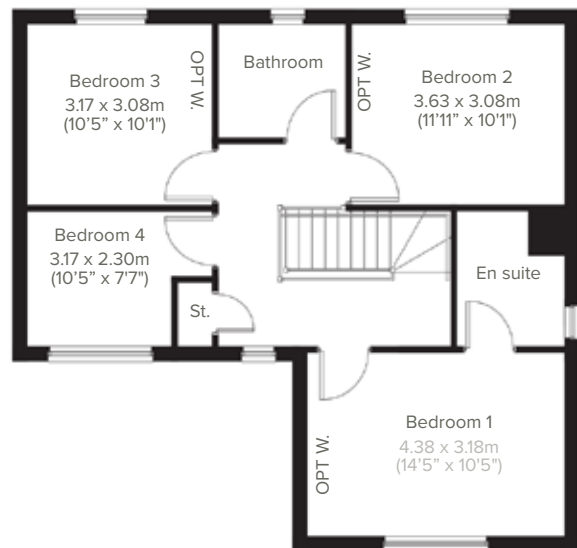


The energy efficiency ratings are an average for each house type and individual plots may vary.

A popular family home, The Lismore ticks all the boxes. The modern and stylish open plan kitchen/dining room is perfect for spending time as a family and entertaining. There's also a well-proportioned front aspect lounge, downstairs storage cupboard, WC, garage and handy utility with outside access. Upstairs there are four bedrooms - bedroom one has an en suite - a large family-sized bathroom and a storage cupboard.



Ground floor



First floor

This information is for guidance only and does not form any part of any contract or constitute a warranty. Illustrations are of typical elevations and may vary. Floor plans are not drawn to scale and window positions may vary. Room dimensions are subject to a +/- 50mm (2") tolerance and are based on the maximum dimensions in each room. Please consult your sales advisor on site for specific elevations, room dimensions and external finishes. The EPC ratings are estimated and vary between house types, orientation and developments.

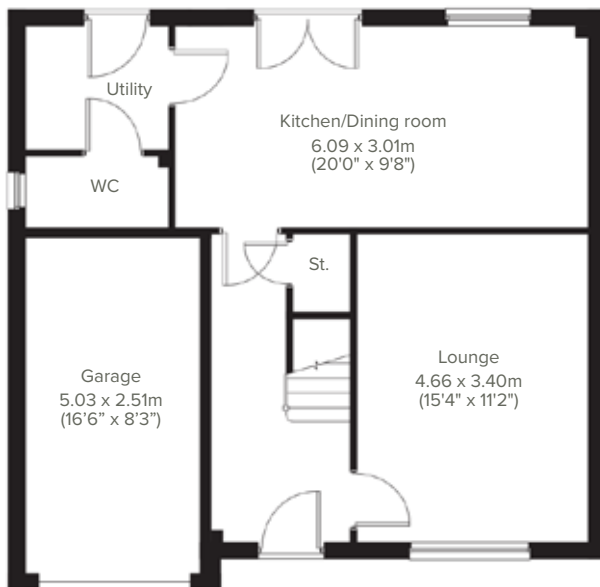


THORNWOOD
Five bedroom home

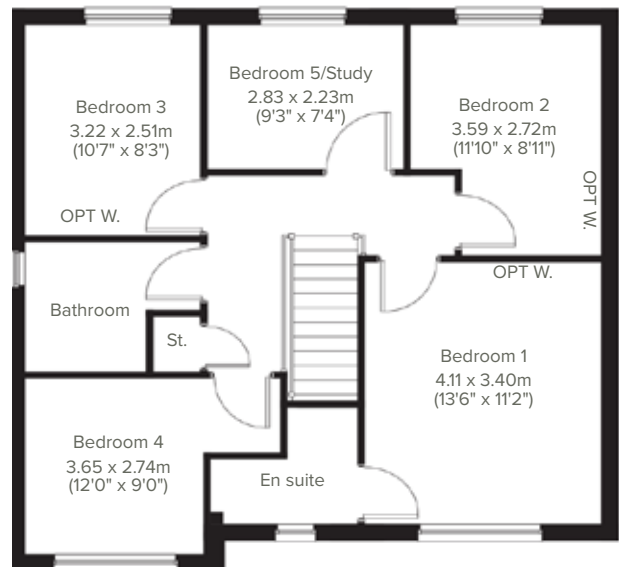


The following energy efficient ratings are an average for each house type and individual plots may vary.

Ideal for family life, The Thornwood is a beautiful five-bedroom home. There's a large open plan kitchen/dining room with French doors leading to the garden, separate lounge and handy utility room and downstairs WC. Upstairs there are five good sized bedrooms - bedroom one with en suite and a spacious family bathroom.



Ground floor



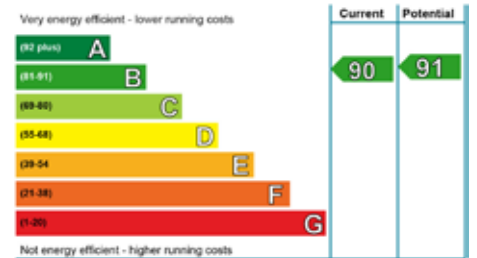
First floor

This information is for guidance only and does not form any part of any contract or constitute a warranty. Illustrations are of typical elevations and may vary. Floor plans are not drawn to scale and window positions may vary. Room dimensions are subject to a +/- 50mm (2") tolerance and are based on the maximum dimensions in each room. Please consult your sales advisor on site for specific elevations, room dimensions and external finishes. The EPC ratings are estimated and vary between house types, orientation and developments.



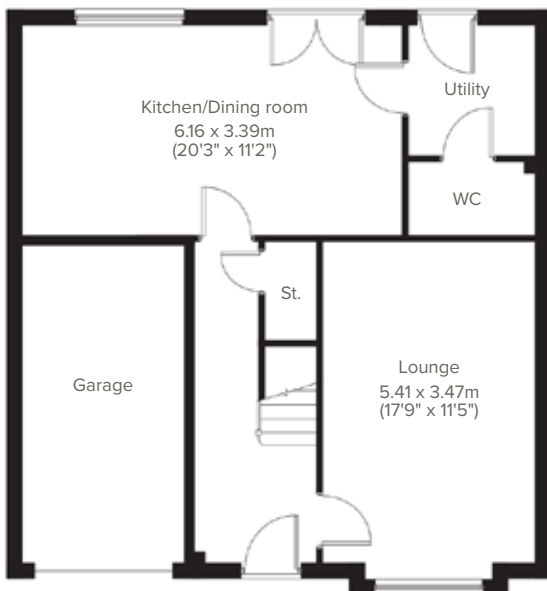
WHITHORN

Four bedroom home

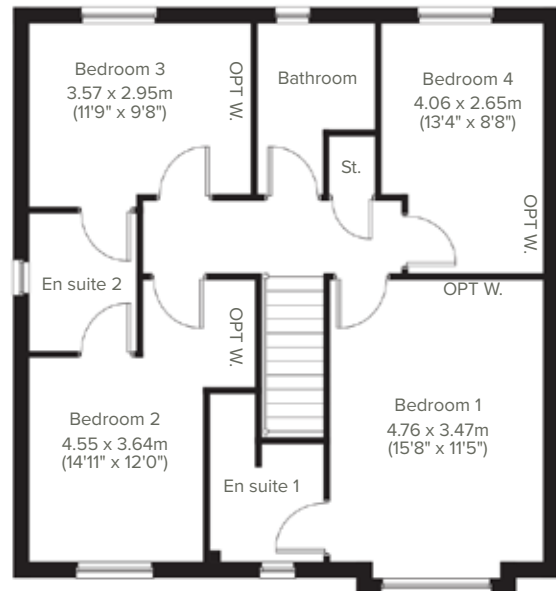


The energy efficiency ratings are an average for each house type and individual plots may vary.

The Whithorn is an impressive four-bedroom detached property. The open plan kitchen/dining room is spacious and bright with double French doors leading onto the garden - perfect for entertaining friends and family. There's also a spacious front aspect lounge, separate utility room, storage cupboard, WC and an integral garage. Upstairs there are four good-sized bedrooms, with an en suite to bedroom one and Jack and Jill en suite to bedrooms two and three.



Ground floor



First floor

This information is for guidance only and does not form any part of any contract or constitute a warranty. Illustrations are of typical elevations and may vary. Floor plans are not drawn to scale and window positions may vary. Room dimensions are subject to a +/- 50mm (2") tolerance and are based on the maximum dimensions in each room. Please consult your sales advisor on site for specific elevations, room dimensions and external finishes. The EPC ratings are estimated and vary between house types, orientation and developments.



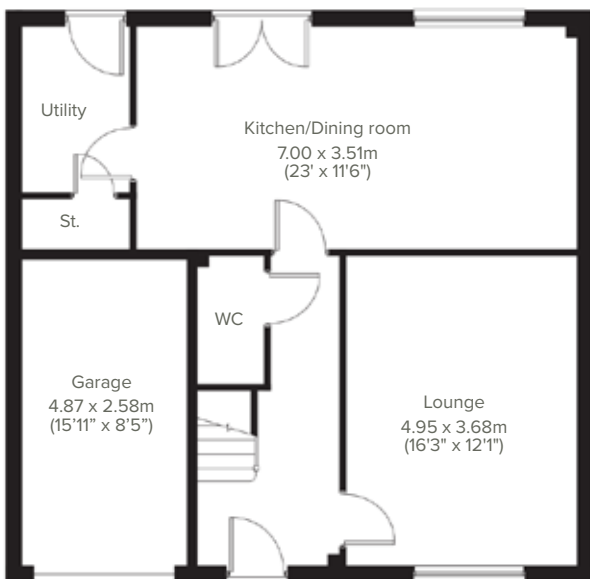
WARRISTON

Five bedroom home

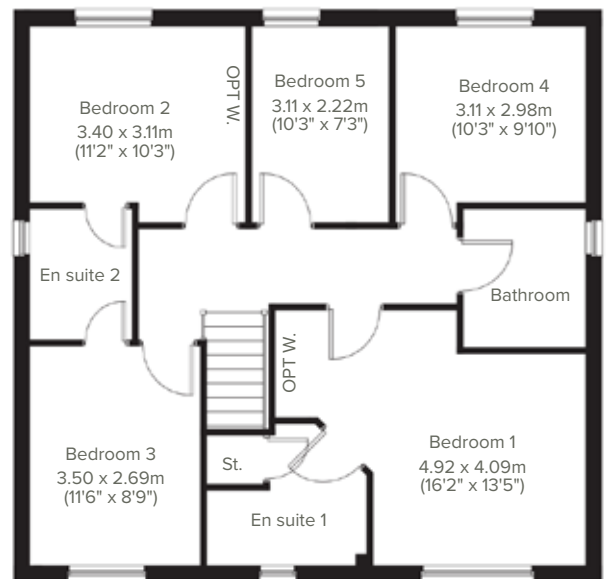


The energy efficiency ratings are an average for each house type and individual plots may vary.

An impressive family home, The Warriston is a five-bedroom detached property perfect for modern living. The stylish open plan kitchen/dining room is ideal for spending time as a family and entertaining guests. There's also a well-proportioned lounge, downstairs storage cupboard, WC and handy utility with outside access. Upstairs there are five bedrooms - bedroom one with en suite - and Jack and Jill en suite to bedroom two and three.



Ground floor



First floor

This information is for guidance only and does not form any part of any contract or constitute a warranty. Illustrations are of typical elevations and may vary. Floor plans are not drawn to scale and window positions may vary. Room dimensions are subject to a +/- 50mm (2") tolerance and are based on the maximum dimensions in each room. Please consult your sales advisor on site for specific elevations, room dimensions and external finishes. The EPC ratings are estimated and vary between house types, orientation and developments.



BUILT BY US, STYLED BY YOU

Our goal is to make your house feel like your home before you've even collected the keys. Key to achieving this is giving you the creative freedom to add your own style and personality to every room through our fabulous **Finishing Touches** collection.

FINISHING TOUCHES

Featuring the very latest designs from a host of leading brands, Finishing Touches lets you personalise your home inside and out.

And rest assured, every upgrade and item available has been carefully chosen to complement the style and finish of your new home. Of course, the real beauty is that all these extras will be ready for the day you move in.



Our Finishing Touches collection includes:

- ✓ Carpets
- ✓ Lighting packages
- ✓ Wardrobes
- ✓ Kitchen upgrades
- ✓ Bathroom upgrades
- ✓ Fixtures
- ✓ Appliances

Thanks to our impressive buying power we can offer almost any upgrade you can imagine at a highly competitive price. And best of all, it can all be arranged from the comfort and convenience of one of our marketing suites.



The earlier you reserve, the greater the choice.

We'll always try and accommodate the Finishing Touches you want, however it's worth remembering that the earlier you reserve your home in the build stage, the more options you'll have available.

Finishing Touches are subject to availability and stage of construction. Prices for your specific home type will be in our price list. For a full list of Finishing Touches available for your home, please contact the Sales Advisor on site.

SPECIFICATIONS

External



Walls	Traditional cavity walls (Inner: timber frame or block Outer: Style suited to planned architecture)
Roof	Tile or slate effect with PVCu rainwater goods
Windows	Double glazed low E-glass windows in PVCu frames
Doors	GRP-skinned external doors with timber frames. French doors to garden (where applicable)
Other	PV Panels

Internal



Ceilings	Painted white
Lighting	Pendant or batten fittings with low-energy bulbs
Stairs & walls	Staircase painted white. Walls painted in white emulsion
Doors	White internal doors
Heating	Gas-fired combi boiler with radiators in all main rooms (most with thermostatically-controlled valves)
Insulation	Insulated loft and hatch to meet current building regulations
Electrics	Individual circuit breakers to consumer unit & double electric sockets to all main rooms
General	TV point and FibreNest router in Lounge

Kitchen



General	Fully-fitted kitchen with a choice of doors * laminate worktop with upstands to match (depending on build stage)
General	Stainless steel bowl sink with pillar taps to kitchen only
Appliances	Single electric oven in white, gas hob in white and integrated cooker hood

Bathroom



General	White bathroom suites with chrome-finished fittings. Extractor fan to bathroom and en suite (where applicable)
General	Shower over bath (applicable to homes with no en suite)
General	Half height tiling to sanitary-ware walls (bathroom and ensuite)
General	Tiled splasback to basin in WC

Security



Locks	Multi-point locking to front and rear doors, locks to all windows (except escape windows)
Fire	Smoke/heat detectors wired to the mains with battery backup

Garage/ Gardens



Garage	Garage with up-and-over white door; or car ports or parking space
Gardens	Front lawn turfed or landscaped (where applicable)
Fencing	1.8 metre fence to rear garden, plus gate

Your home, better connected for a brighter future.

Great news! Mayfields will benefit from access to ultrafast, full fibre-optic broadband.



Your home, better connected with FibreNest

- ▶ 100% full fibre-optic internet access installed directly into your new home
- ▶ You and your family can do more online at the same time, with less lag and hold-ups
- ▶ Enjoy lightning-fast speeds that won't be affected by the length of the line serving your property
- ▶ Full-fibre future-proofs your home, ensuring you'll always be able to access the latest in online services
- ▶ Stream 4k content, play online games and more on multiple devices all at the same time with less interruptions
- ▶ Work from home like you do in the office, thanks to our high-capacity, super reliable network
- ▶ Enjoy an exceptional level of customer support from our UK call centres

How our packages compare¹

Download type	500Mb	250Mb	125Mb	75Mb	20Mb	10Mb
 HD movie (12GB)	3m 15s	6m 30s	13m	23m	1h 20m	2h 40m
 Video game (40GB)	11m	21m 45s	43m 45s	1h 17m	4h 30m	9h

To have your new home connected, register now at fibrenewest.com/connect
 Questions? Just give our friendly team a call on **0333 234 2220**



Please see fibrenewest.com for up-to-date details on our packages and pricing.

No hidden costs. No price rises during the minimum term of your contract or automatic increases at the end.² Great service. Guaranteed.

¹Estimated download times are calculated at the maximum attainable speed and assumes that speed being available for the duration of the download. Speeds are delivered to your FibreNest Hub and may not be achieved when using a device that is incapable of communicating at that speed. Circular graphical illustrations represent proportional segments of time based on the longest and shortest download times displayed. ²FibreNest will not increase the price of your package during the minimum term of your contract unless required to by a change in law or regulatory obligations, for example, due to an increase in the rate of VAT. FibreNest does not plan automatic price increases to apply at the end of your minimum term; however, the basic price of our packages may vary over time and may take effect before you enter a subsequent minimum term with us.

500Mb

Ultrafast Broadband

Great for families with many devices, avid gamers and home workers.

Up to 500Mb download
Up to 50Mb upload

250Mb

Megafast Broadband

Stream 4k Ultra-HD content, play online games and more.

Up to 250Mb download
Up to 25Mb upload

125Mb

Superfast Broadband

Watch full HD TV whilst performing larger downloads.

Up to 125Mb download
Up to 10Mb upload

75Mb

Faster Broadband

Browse the web intensively, play online games and watch catch-up TV.

Up to 75Mb download
Up to 10Mb upload

20Mb

Standard Broadband

Browse, stream music and download larger files.

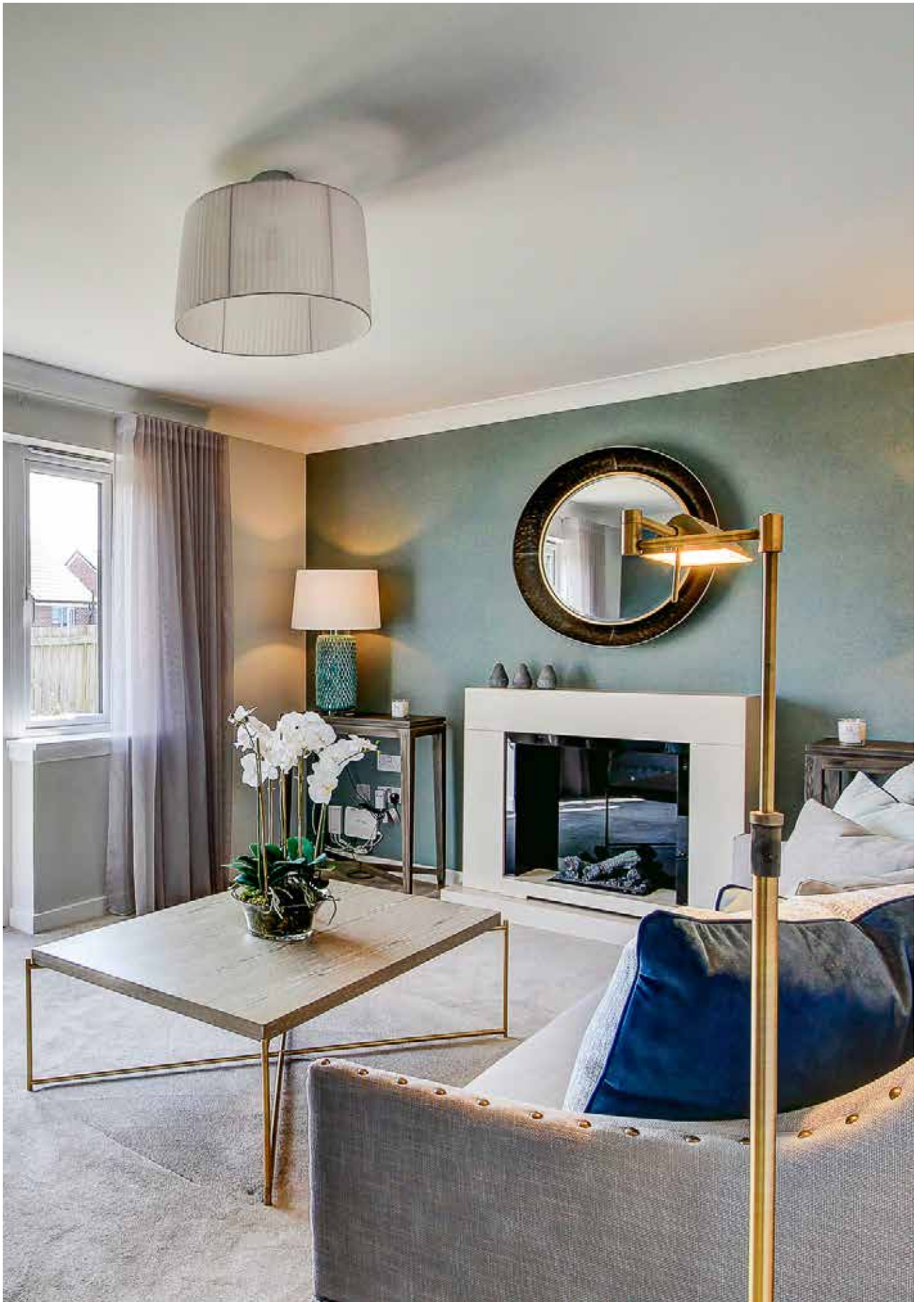
Up to 20Mb download
Up to 2Mb upload

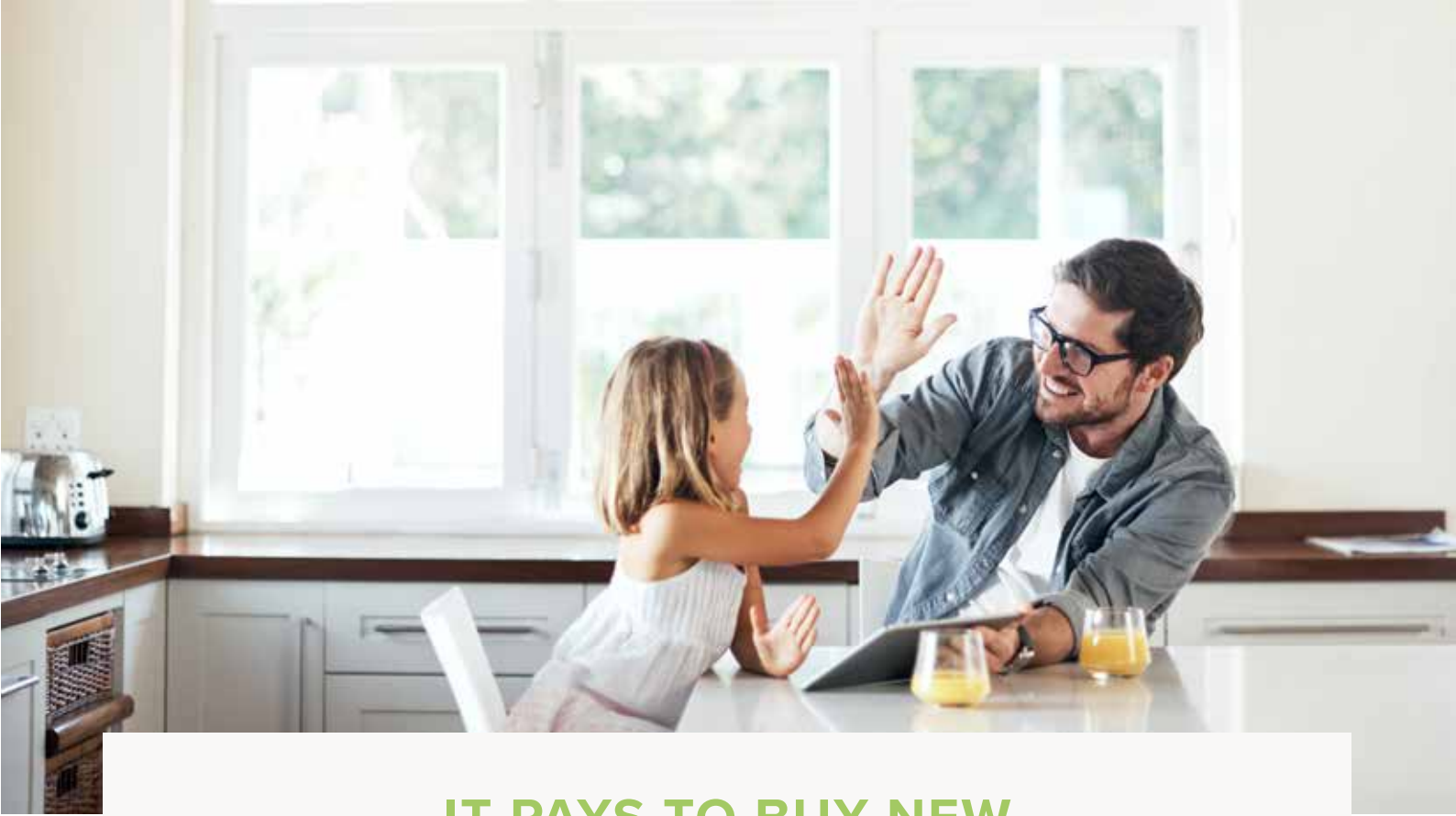
10Mb

Budget Broadband

Suitable for basic general web browsing.

Up to 10Mb download
Up to 1Mb upload





IT PAYS TO BUY NEW

✔ NO CHAINS

Few things are more annoying in the home buying process than a time-consuming chain you can't control. Buying new limits the chance of getting involved in one.

✔ NO SPACE GOES TO WASTE

Research shows that 17% of living space often goes unused in older properties. Modern homes are proven to use every inch of room as effectively as possible.

✔ LIVING IT UP IN STYLE

When you buy a new Persimmon home you can expect a brand spanking new fitted kitchen, bathroom suite, and in some cases an en suite and dressing room.

✔ LESS WORK, MORE FREEDOM

Buying new means you'll spend far less time on repairs and maintenance, after all, life's too short to spend every weekend doing DIY.

✔ FLEXIBLE WAYS TO BUY

We offer a range of schemes to help get you on the property ladder, including Home Change and Part Exchange. You may also be eligible to use the Government's Help to Buy scheme.

✔ BETTER SAFE THAN SORRY

All our homes are built from fire-retardant materials and come with fitted smoke alarms and fire escape windows. They're also far more secure than older buildings thanks to the security locks and lighting we use.

✔ LOWER ENERGY BILLS

New homes have to meet stringent energy-efficient standards, which means you'll spend less on your energy bills from day one. All our homes come with a cost-effective combi boiler, first-rate loft insulation and draught-free double glazed windows.

✔ FIRST-RATE, NOT SECOND-BEST

From your boiler and windows to your carpets and curtains, everything in your new home is new. This means you get to enjoy all the latest designs and tech, while also benefiting from the manufacturers' warranties that come with them.

✔ LONG-TERM PEACE OF MIND

All our new homes come with a ten-year, insurance-backed warranty, as well as our very own two-year Persimmon warranty. In the unlikely event you ever need to make a claim, our Customer Care Team will be happy to provide all the help you need.

✔ THE CHOICE IS ALL YOURS

A new home offers you a blank canvas and a chance to showcase your own style and personality at every turn. So while our homes come with fitted kitchens and bathrooms, which you can fully customise them with our Finishing Touches (depending on the build stage).

Mayfields

For prices, opening times and availability contact:

Mayfields
High Road
Saltcoats, Ayrshire
KA21 5RP

T: 01294 446 808

E: mayfields.wSCO@persimmonhomes.com

[persimmonhomes.com/mayfields](https://www.persimmonhomes.com/mayfields)

Head Office

Persimmon Homes West Scotland

180 Findochty Street
Garthamlock
Glasgow
G33 5EP

T: 0141 766 2600

E: wSCO.sales@persimmonhomes.com

[persimmonhomes.com](https://www.persimmonhomes.com)



Issue: December 2021 Ref: 410 - L14

Persimmon plc, Registered office: Persimmon House, Fulford, York YO19 4FE
Registered in England no: 1818486

Mayfields is a marketing name only. The copyright in this document and design is confidential to and the property of Persimmon Homes Developments 2021. These details are intended to give a general idea of the type of home but they do not form part of any specification or contract. The dimensions are approximate and may vary depending on internal finish. By the time you read this some of the details may have changed because of the Persimmon Homes policy of continually updating and improving design features.

Therefore, please be sure to check the plan and specification in the sales office to keep you up-to-date with the latest improvements. The vendors of this property give notice that: (i) the particulars are produced in good faith, are set out as a general guide only and do not constitute any part of a contract; (ii) no person in the employment of Persimmon Homes or their authorised agents has any authority to make or give any representation or warranty whatever in relation to this property.



www.persimmonhomes.com