



Turner House

Pump House Crescent, TW8

£2,500 per month
(£576.92 per week)

CHESTERTONS



Turner House

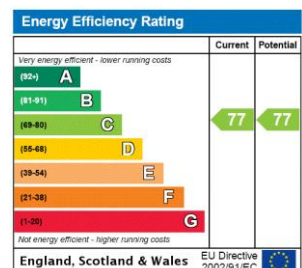
Pump House Crescent, TW8

- Modern Purpose Built Development
- Two Double Bedrooms
- Two Bathrooms
- Private Balcony
- Underground Parking
- Gym & Concierge



Located in a desirable riverside development, this sixth floor (with a lift) two double bedroom apartment is available to rent. The property includes an open plan reception and kitchen, two bathrooms (one being en-suite) and a private balcony. Pump House Crescent offers a gym, concierge and underground parking.

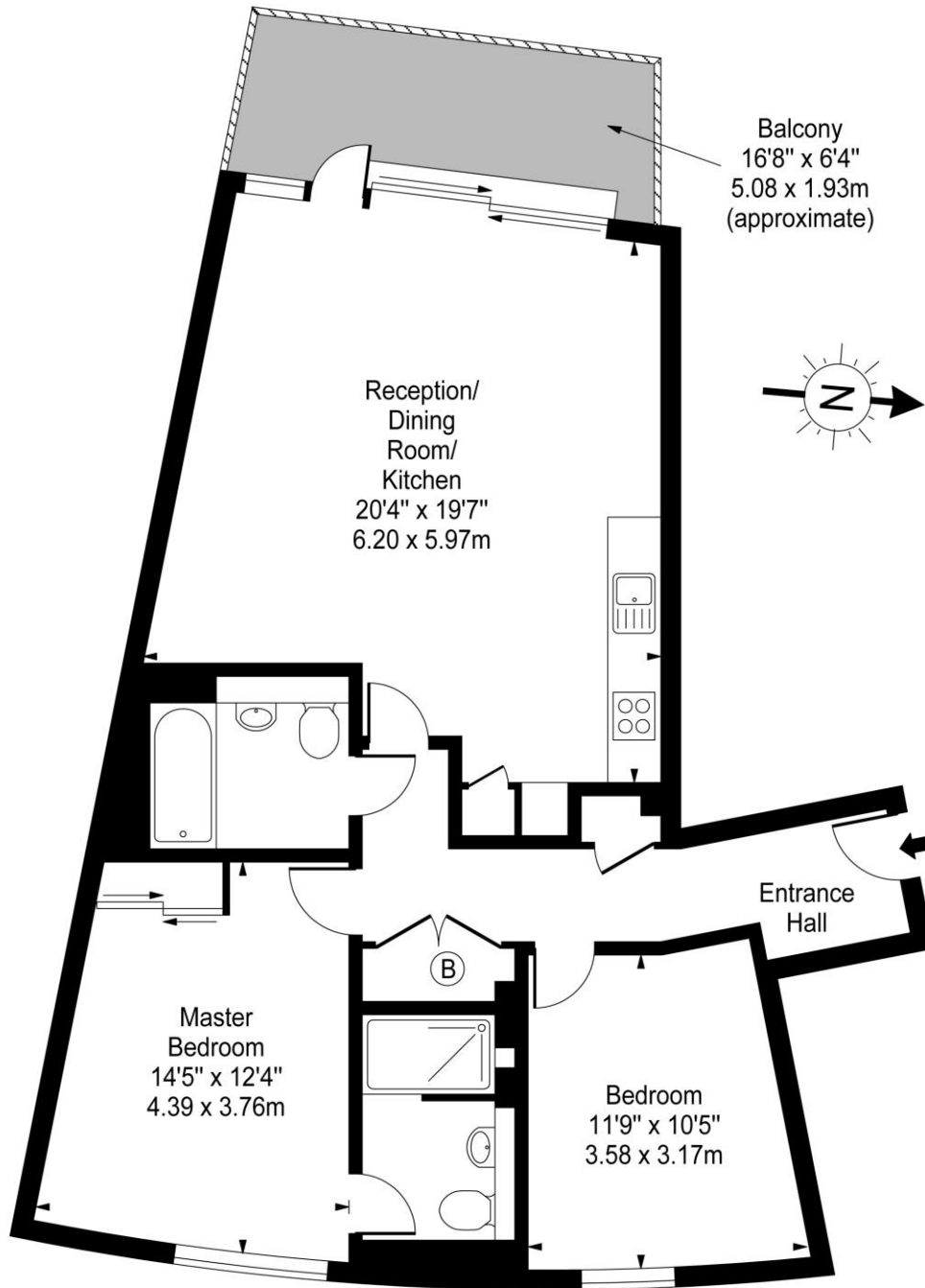
Minimum Term: 12 months
Deposit Required: 5 weeks
Local Authority: London Borough of Hounslow
Council Tax Band: E
EPC Rating: B
Unfurnished



Chestertons Kew Lettings

1 Royal Parade
 Richmond
 Surrey
 TW9 3QD
 kewlettingsusers@chestertons.co.uk
 02081040340
 chestertons.co.uk

Turner House, TW8



Sixth Floor

Approx Gross Internal Area **866 Sq Ft - 80.45 Sq M**

For Illustration Purposes Only - Not To Scale

www.goldlens.co.uk

Ref. No. 006369Ga

