



# Whitcome Mews

Richmond, TW9

£15,000 per month  
(£3,461.54 per week)

A delightful four-bedroom townhouse in Kew Riverside just a stones throw from Kew Station which provides quick access into central London. There is also access to the swimming pool and gym on site.

CHESTERTONS





# Whitcome Mews

## Richmond, TW9

- Short Let
- Four Bedroom Townhouse
- Balcony
- Garden
- Modern
- Furnished



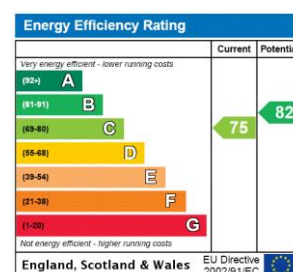
This splendid four-bedroom townhouse situated within the highly desirable Kew Riverside Development benefits from a private garden, exclusive access to the residents gymnasium & swimming facilities plus 24 hour's concierge service.

The ground floor includes an entrance hall, a convenient WC, utility room and a beautifully designed kitchen/dining room that leads directly to a large private patio/garden. There is also a lovely front garden.

On the first floor there is a spacious reception room with natural light and access to a private balcony. Ascending to the the second floor you will find the principal bedroom with en-suite, alongside another double bedroom and a bathroom. The top floor features two further bedrooms, a bathroom, and thoughtful storage.

Richmond's green open spaces, and excellent transport links are all within easy reach.

**Minimum Term:** 1 months  
**Deposit Required:** £20,769.23  
**Local Authority:** Richmond upon Thames  
**Council Tax Band:** H  
**EPC Rating:** C  
**Furnished**



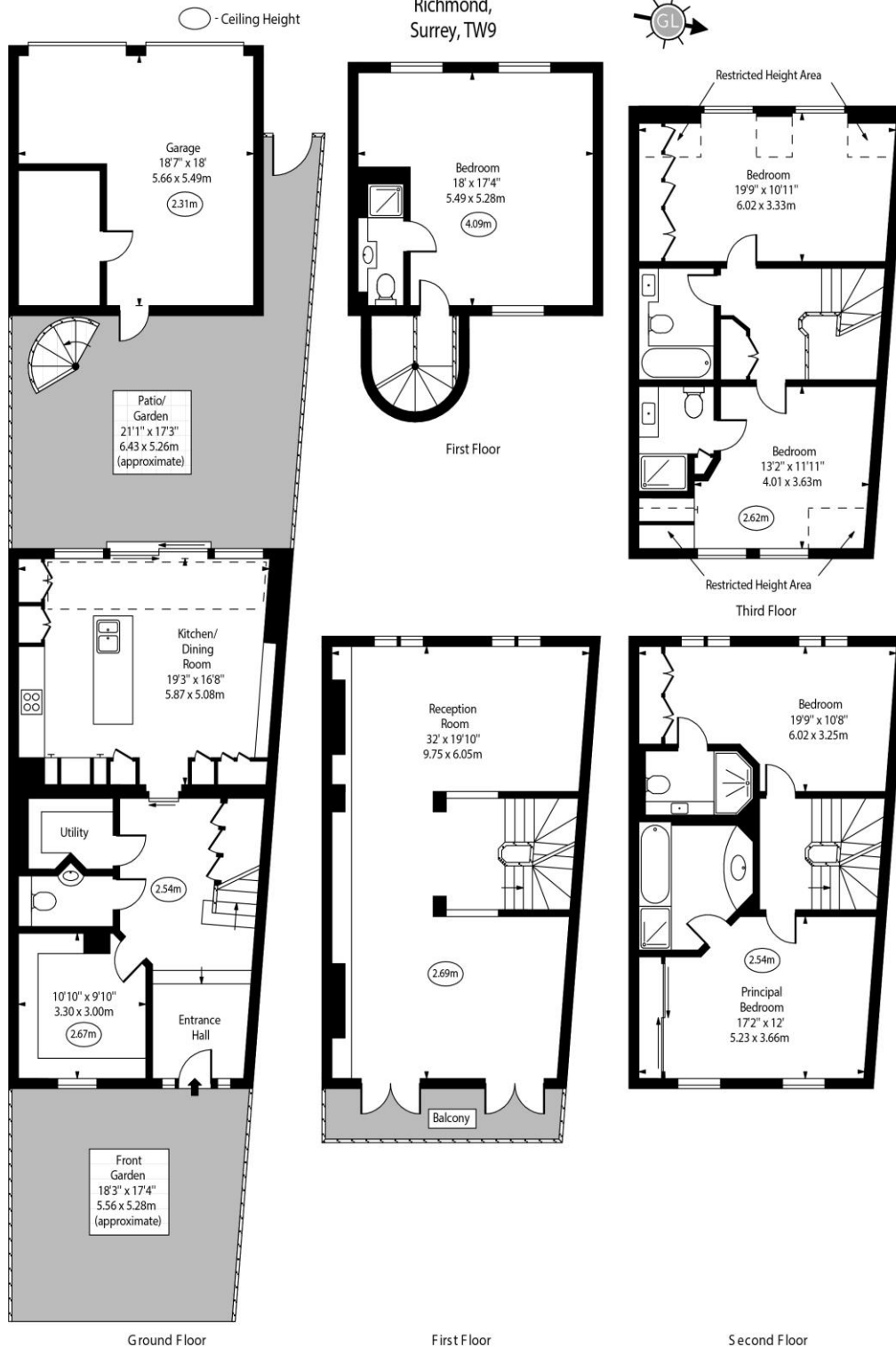
### *Chestertons Kew Lettings*

1 Royal Parade  
 Richmond  
 Surrey  
 TW9 3QD  
 kewlettingsusers@chestertons.co.uk  
 02081040340  
 chestertons.co.uk

Additional tenant charges apply (fees apply to non-AST tenancies only)  
 Tenancy Agreement Fee: £300  
 References per Tenant/Guarantor: £60  
 Inventory check (approx. £100 – £250 inc. VAT)  
 chestertons.co.uk/property-to-rent/applicable-fees



Whitcome Mews,  
Richmond,  
Surrey, TW9



Approx Gross Internal Area 2438 Sq Ft - 226.49 Sq M  
(Excluding Out Building)

Approx. Floor Area Including Restricted Heights 2490 Sq Ft - 231.32 Sq M  
(Excluding Out Building)

Out Building Area 690 Sq Ft - 64.10 Sq M

For Illustration Purposes Only - Not To Scale  
www.goldlens.co.uk  
Ref. No. 026894E

Chesterton UK Services Limited trading as Chestertons for themselves and for the vendor of this property whose agents they are, give notice that (i) these particulars do not constitute any part of an offer or contract, (ii) all statements contained within these particulars are made without responsibility on the part of Chestertons or the vendor, (iii) whilst made in good faith, none of the statements contained within these particulars are to be relied upon as a statement or representation of fact, (iv) any intending purchasers must satisfy themselves by inspection or otherwise as to the correctness of each of the statements contained within these particulars, (v) the vendor does not make or give either Chestertons or any person in their employment any authority to make or give representation or warranty whatsoever in relation to this property. Wide angle lenses may be used. ©Copyright Chestertons | Chesterton Global Ltd | Registered Office 40 Connaught Street, Hyde Park, London W2 2AB Registered Company Number 05334580.

