



Quayside House

8 Kew Bridge Road, TW8

£7,500 per month
(£1,730.77 per week)

An exceptionally high specification, elite and newly built waterside penthouse with 270 degree balcony, situated opposite Kew Bridge station. Benefits include residents gym, underground parking & 24 hour concierge.

CHESTERTONS



Quayside House

8 Kew Bridge Road, TW8

- Elite waterside penthouse
- Wrap-around waterside terrace
- Unfurnished
- Parking, concierge & gym
- SONOS surround system



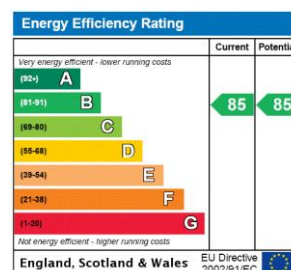
An exceptionally high specification, elite and newly built waterside penthouse with 270 degree balcony, situated in the sought after and highly regarded Kew Bridge development close to local amenities, Kew Bridge mainline station & excellent access to the M4.

This impressive & spacious apartment is ideal for lateral living - boasting a large terrace with east to west views along the river Thames and beautiful landscaped gardens.

It comprises; 3 river facing double bedrooms access to riverside balcony, (master with en-suite), built in storage, spacious hallway with storage & further family bathroom, open plan reception room with 270 degree views, wraparound terrace and floor to ceiling windows and elite kitchen with upgraded Miele appliances and 'fold-away' utility area.

Further benefits include; cooling air system, surround sound, underground parking, 24 hour concierge and residents gymnasium. Offered unfurnished and available immediately.

Minimum Term: 12 months
Deposit Required: 5 weeks
Local Authority: London Borough of Hounslow
Council Tax Band: H
EPC Rating: B
Unfurnished

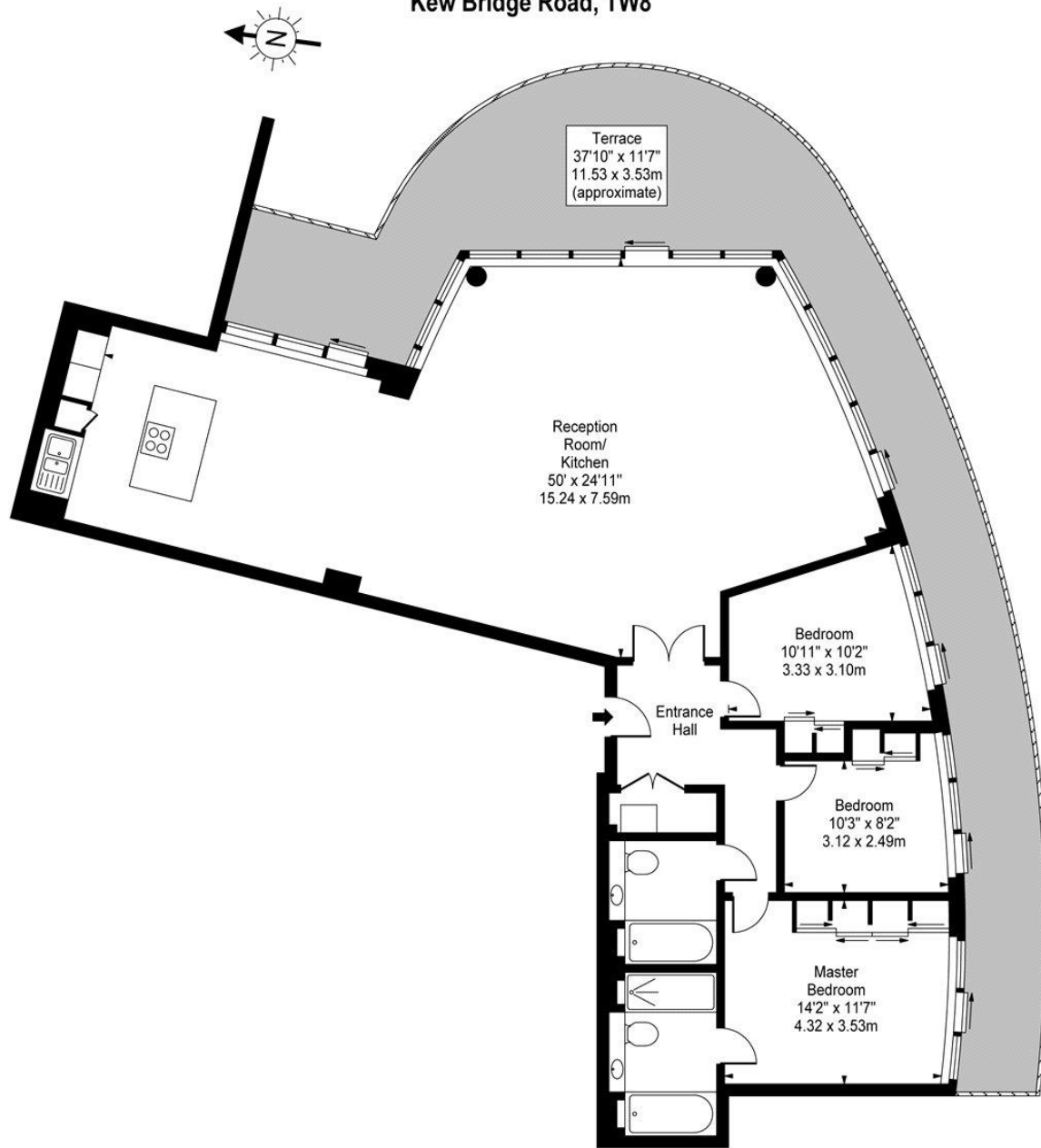


Chestertons Kew Lettings

1 Royal Parade
 Richmond
 Surrey
 TW9 3QD
 kew@chestertons.co.uk
 02081040340
 chestertons.co.uk

Additional tenant charges apply (fees apply to non-AST tenancies only)
 Tenancy Agreement Fee: £300
 References per Tenant/Guarantor: £60
 Inventory check (approx. £100 – £250 inc. VAT)
 chestertons.co.uk/property-to-rent/applicable-fees

**Quayside House,
Kew Bridge Development,
Kew Bridge Road, TW8**



Third Floor

Approx Gross Internal Area 1562 Sq Ft - 145.11 Sq M

For Illustration Purposes Only - Not To Scale

www.goldlens.co.uk

Ref. No. 003541J

