



# Barker Close

Richmond, TW9

£6,500 per month  
(£1,500 per week)

Located in this secure gated development close to the River Thames and being a short walk from Kew Gardens village, a four bedroom, four bathroom family home arranged over four floors and boasting over 2,600 sq. ft of living accommodation.

The house offers fantastic lateral living space to include an amazing double aspect family room with two sets of bi-fold floor to ceiling glass doors overlooking the meticulously designed south facing rear garden. There is also a shower room and utility room on this floor and ample storage facility - perfect for family living.

The first floor which is triple aspect, offers an open plan kitchen/dining room/family room with a Juliette balcony as well as a guest cloakroom. The second floor comprises a main bedroom suite with dressing room and en suite bathroom with separate shower cubicle, a further double bedroom with en suite shower room and the third floor offers two double bedrooms and a family bathroom.

**CHESTERTONS**



# Barker Close

## Richmond, TW9

- Four bedrooms
- Four bathrooms
- Arranged over four floors
- In excess of 2,600 sq. ft
- South facing rear garden
- Video entry phone and alarm system
- Off street and guest parking





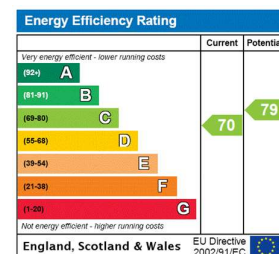
The specification throughout is of the highest quality and also includes underfloor heating, a video entry phone and alarm system and bicycle storage. There is off street parking, with an electric charging point at the front as well as guest parking within the grounds.

Located in this secure gated development close to the River Thames and being a short walk from Kew Gardens village, a four-bedroom, four-bathroom family home arranged over four floors and boasting over 2,600 sq ft of living accommodation.

The house offers fantastic lateral living space to include an amazing double aspect family room with two sets of bi-fold floor to ceiling glass doors overlooking the meticulously designed south facing rear garden. There is also a shower room and utility room on this floor and ample storage facility - perfect for family living.

The specification throughout is of the highest quality and also includes underfloor heating, a video entry phone and alarm system and bicycle storage. There is off street parking to the front as well as guest parking within the grounds.

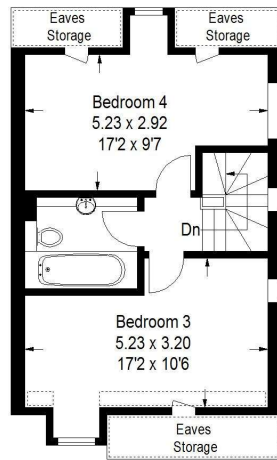
**Minimum Term:** 12 months  
**Deposit Required:** £7,500.00  
**Local Authority:** London Borough of Richmond upon Thames  
**Council Tax Band:** G  
**EPC Rating:** C  
**Unfurnished**



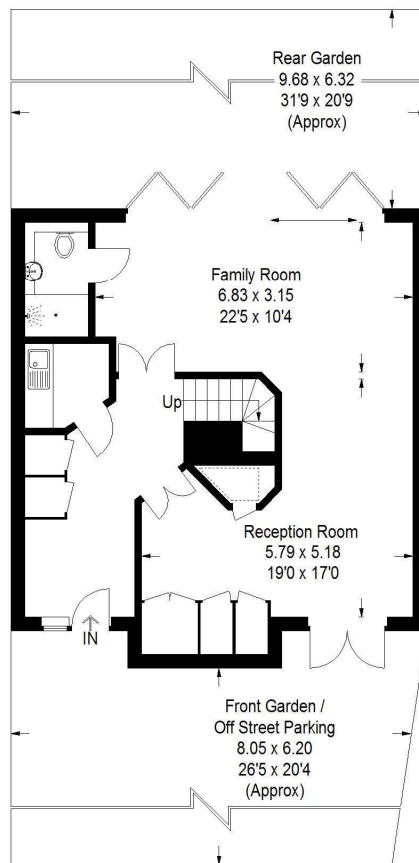
### *Chestertons Kew Lettings*

1 Royal Parade  
 Richmond  
 Surrey  
 TW9 3QD  
[kewlettingsusers@chestertons.co.uk](mailto:kewlettingsusers@chestertons.co.uk)  
 02081040340  
[chestertons.co.uk](http://chestertons.co.uk)

Additional tenant charges apply (fees apply to non-AST tenancies only)  
 Tenancy Agreement Fee: £300  
 References per Tenant/Guarantor: £60  
 Inventory check (approx. £100 – £250 inc. VAT)  
[chestertons.co.uk/property-to-rent/applicable-fees](http://chestertons.co.uk/property-to-rent/applicable-fees)



**Third Floor**



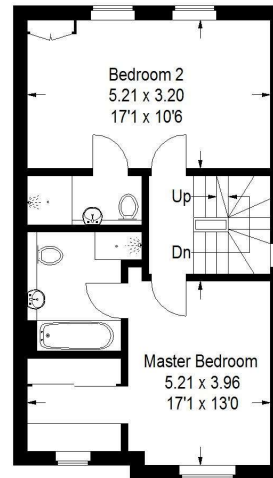
**Ground Floor**

## Barker Close

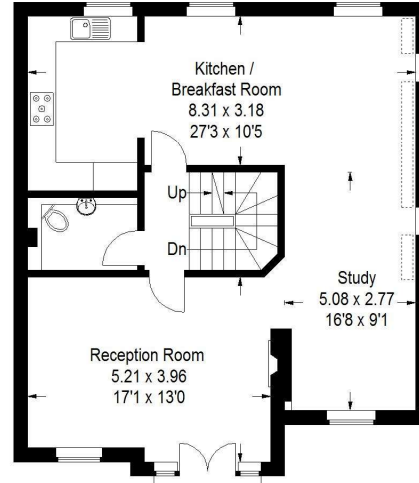
Approx. Gross Internal Area  
(Excluding Eaves Storage)  
238.8 sq mt / 2570 sq ft



Reduced headroom  
below 1.5 m / 5'0



**Second Floor**



**First Floor**

## Featherstone Leigh Ltd

Every attempt is made to assure accuracy, however measurements are approximate and for illustrative purposes only. Not to scale. (505291)

