



# Chatterton Court

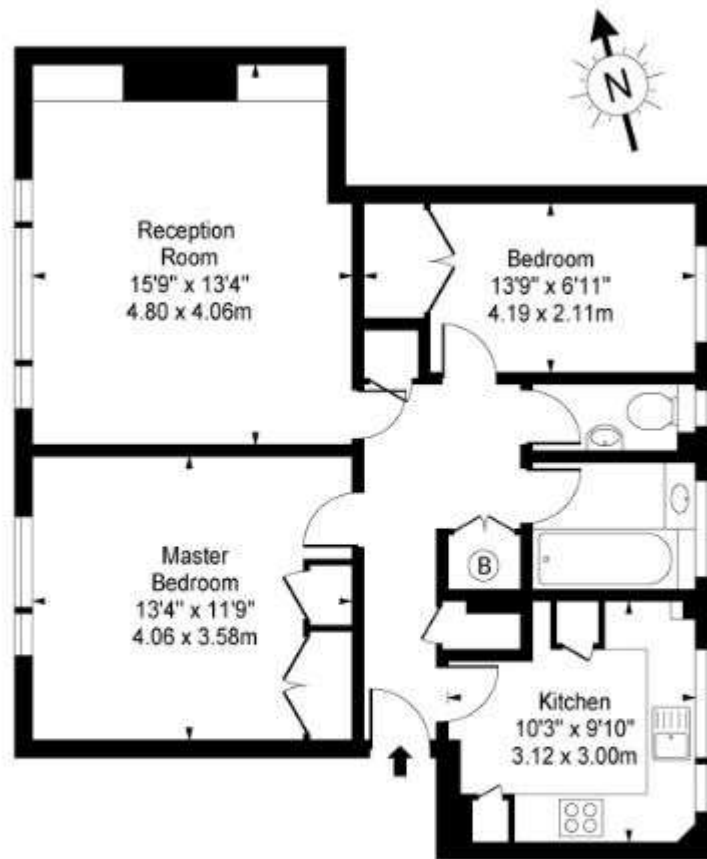
Eversfield Road, TW9

£2,300 per month  
(£530.77 per week)

An extremely well-presented, bright & spacious two bedroom apartment with off road parking overlooking the iconic Kew Gardens with excellent access to Richmond town centre & mainline station. Unfurnished.

**CHESTERTONS**

## Chatterton Court, Eversfield Road, TW9



Second Floor

Approx Gross Internal Area **723 Sq Ft - 67.17 Sq M**

For Illustration Purposes Only - Not To Scale

[www.goldlens.co.uk](http://www.goldlens.co.uk)

Ref. No. 004615J

Minimum Term: 12 months  
Deposit Required: £2,653.85  
Local Authority: London Borough Of Richmond Upon Thames  
Council Tax Band: D  
EPC Rating: D  
Unfurnished



### *Chestertons Kew Lettings*

306 Sandycombe Road  
Kew  
Richmond  
Surrey  
TW9 3NG  
[lettings.kew@chestertons.com](mailto:lettings.kew@chestertons.com)  
0208 104 0340

Additional tenant charges apply (fees apply to non-AST tenancies only)

Tenancy Agreement Fee: £300

References per Tenant/Guarantor: £60

Inventory check (approx. £100 – £250 inc. VAT)

[chestertons.com/property-to-rent/applicable-fees](http://chestertons.com/property-to-rent/applicable-fees)

Chesterton Global Ltd trading as Chestertons for themselves and for the vendor of this property whose agents they are, give notice that (i) these particulars do not constitute any part of an offer or contract, (ii) all statements contained within these particulars are made without responsibility on the part of Chestertons or the vendor, (iii) whilst made in good faith, none of the statements contained within these particulars are to be relied upon as a statement or representation of fact, (iv) any intending purchasers must satisfy themselves by inspection or otherwise as to the correctness of each of the statements contained within these particulars, (v) the vendor does not make or give either Chestertons or any person in their employment any authority to make or give representation or warranty whatsoever in relation to this property. Wide angle lenses may be used. ©Copyright Chestertons | Chesterton Global Ltd | Registered Office 40 Connaught Street, Hyde Park, London W2 2AB Registered Company Number 05334580.

