



Holland Gardens

Brentford, TW8

£2,500 per month
(£576.92 per week)

A well proportioned and spacious ground floor apartment in the increasingly popular Holland Gardens development, situated within close proximity of Kew Bridge station, local shops and the river Thames. EPC C



Holland Gardens

Brentford, TW8

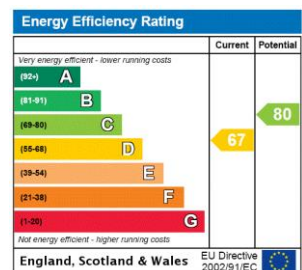
- Ground Floor Apartment
- Two Spacious Bedrooms & On-Site Gym
- Allocated parking & Private Terrace
- Close To Kew Bridge
- EPC Rating C



A well presented and spacious ground floor apartment in the increasingly popular Holland Gardens development, situated within close proximity of Kew Bridge station, local shops and the river Thames. This well proportioned apartment comprises master bedroom with en-suite, further double bedroom, good size living room with patio doors leading to private terrace & overlooking communal gardens, modern fitted kitchen with appliances and family bathroom. Further benefits include an allocated underground parking space & access to the gym and sauna. EPC rating C

Brentford is situated on the banks of the River Thames, with a super market, post office, banks as well as a weekly Sunday food market -

Minimum Term: 12 months
Deposit Required: £0.00
Local Authority: London Borough of Hounslow
Council Tax Band: E
EPC Rating: D
Part Furnished



Chestertons Kew Lettings

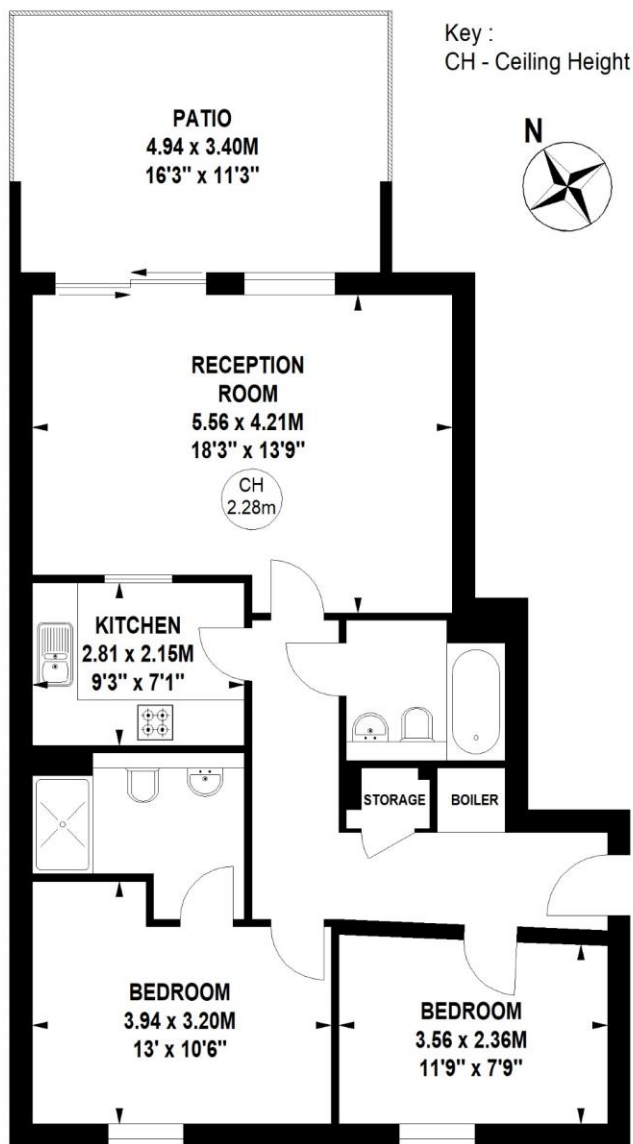
1 Royal Parade
 Richmond
 Surrey
 TW9 3QD
 kew@chestertons.co.uk
 02081040340
 chestertons.co.uk

Additional tenant charges apply (fees apply to non-AST tenancies only)
 Tenancy Agreement Fee: £300
 References per Tenant/Guarantor: £60
 Inventory check (approx. £100 – £250 inc. VAT)
 chestertons.co.uk/property-to-rent/applicable-fees

**Holland Gardens,
Brentford,
Middlesex, TW8**

Approximate gross internal area

70.60 sq m / 760 sq ft



Ground Floor

**Not to scale, for guidance only and must not be relied upon as a statement of fact.
All measurements and areas are approximate only**

