



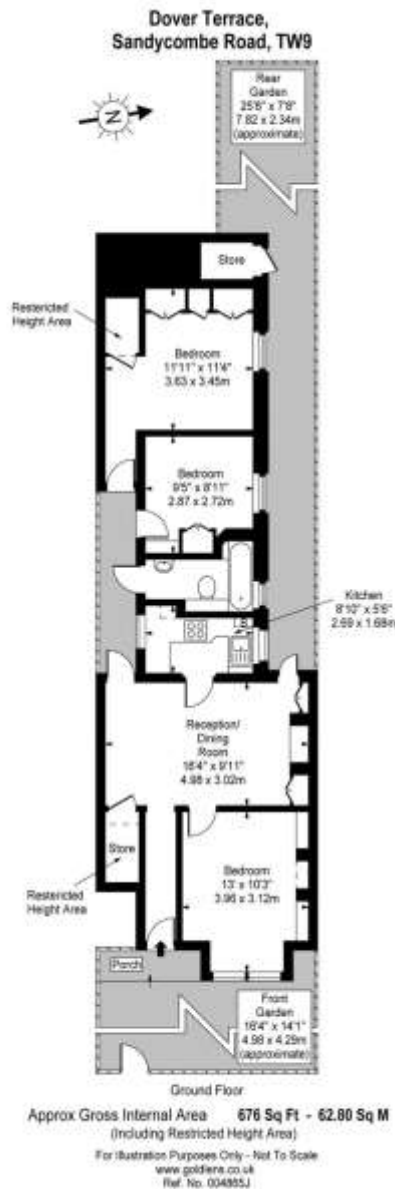
Dover Terrace

Kew, TW9

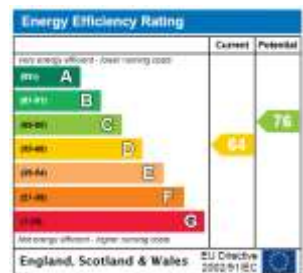
£2,000 per month
(£461.54 per week)

A well-presented & spacious 2 double bedroom ground floor apartment situated close to Kew village & Richmond town centre with privately enclosed rear garden. EPC Rating D

CHESTERTONS



Minimum Term: 6 months
 Deposit Required: 5 weeks
 Local Authority: London Borough of Richmond Upon Thames
 Council Tax Band: D
 EPC Rating: D
 Unfurnished



Chestertons Kew Lettings

306 Sandycombe Road
 Kew
 Richmond
 Surrey
 TW9 3NG
 lettings.kew@chestertons.com

Additional tenant charges apply (fees apply to non-AST tenancies only)
 Tenancy Agreement Fee: £300
 References per Tenant/Guarantor: £60
 Inventory check (approx. £100 – £250 inc. VAT)
chestertons.com/property-to-rent/applicable-fees

Chesterton Global Ltd trading as Chestertons for themselves and for the vendor of this property whose agents they are, give notice that (i) these particulars do not constitute any part of an offer or contract, (ii) all statements contained within these particulars are made without responsibility on the part of Chestertons or the vendor, (iii) whilst made in good faith, none of the statements contained within these particulars are to be relied upon as a statement or representation of fact, (iv) any intending purchasers must satisfy themselves by inspection or otherwise as to the correctness of each of the statements contained within these particulars, (v) the vendor does not make or give either Chestertons or any person in their employment any authority to make or give representation or warranty whatsoever in relation to this property. Wide angle lenses may be used. ©Copyright Chestertons | Chesterton Global Ltd | Registered Office 40 Connaught Street, Hyde Park, London W2 2AB Registered Company Number 05334580.

