



# Kelsall Mews

Richmond, TW9

Asking Price £1,700,000

Exceptionally well-presented modern townhouse enviably positioned within the popular Kew Riverside gated development overlooking the river Thames.

Kelsall Mews is a superb modern family home offering well-balanced living space arranged over four floors. The property combines elegant design with relaxed, practical living.

**CHESTERTONS**





# Kelsall Mews

Richmond, TW9

- Five Bedrooms
- Townhouse
- Gated Development
- Circa 2,400 sq. ft.
- Garage
- Garden
- Gym/Pool





The ground floor welcomes you with a bright, spacious hallway leading through to an impressive kitchen/breakfast room - perfect for everyday family life and entertaining. From here, doors open directly onto a private rear garden. The house also comes with underfloor heating, a video entry system, and an integral garage with space for additional parking in front of the house.

Across the upper levels are two generous first-floor reception rooms, each with its own balcony to the front and rear, together with five well-proportioned bedrooms and four bath/shower rooms. High ceilings give a sense of space and quality throughout.

Kew Riverside residents enjoy access to a private gym and swimming pool complex, and the development itself is gated, peaceful, and exceptionally well maintained. The property is a short walk from Kew Gardens station, Kew Village, local shops and cafés, and Kew Retail Park — all while being just moments from the River Thames.

A substantial, stylish home in one of Kew's most desirable modern developments. Perfect for families wanting space, convenience, and a premium riverside setting.

**Tenure:** Freehold

**Service Charge:** £5,080 per annum

**Ground Rent:** £0

**Local Authority:** Richmond upon Thames

**Council Tax Band:** G

Score	Energy rating	Current	Potential
92+	A		
81-91	B		
69-80	C	74 C	82 B
55-68	D		
39-54	E		
21-38	F		
1-20	G		

### *Chestertons Kew Sales*

1 Royal Parade

Kew

Richmond

TW9 3QD

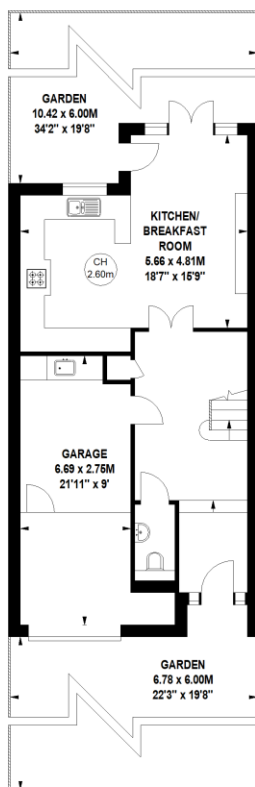
kew@chestertons.co.uk

020 8104 0340

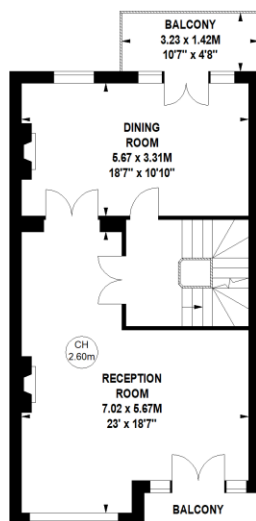
chestertons.co.uk

**Kelsall Mews,  
Richmond, Surrey, TW9**  
Approximate gross internal area  
233.74 sq m / 2516 sq ft

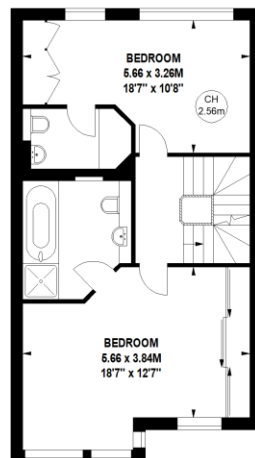
Key :  
CH - Ceiling Height



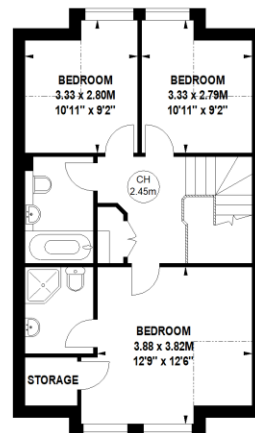
**Ground Floor**



**First Floor**



**Second Floor**



**Third Floor**

Not to scale, for guidance only and must not be relied upon as a statement of fact.  
All measurements and areas are approximate only

