



Sandycombe Road

Kew, TW9

Asking Price £950,000

Delightful Victorian end of terrace house thoughtfully re-modelled and extended offering a most attractive and bright interior arrangement.

CHESTERTONS



Sandycombe Road

Kew, TW9

- End of Terrace House
- Three Bedrooms
- Two Bathrooms
- Private Garden
- Close to Kew Gardens underground station



Well-balanced living space, complemented by a private garden and an outdoor studio/shed. The ground floor boasts a welcoming reception room with period details and a feature fireplace, leading to a bright dining room and a modern galley kitchen with direct access to the garden. The rear garden is a real gem, featuring a low-maintenance lawn, planting borders, and a versatile garden studio ideal for home working or storage.

On the first floor, you'll find two generous double bedrooms and a stylish family bathroom. The top floor has been extended to create an impressive principal bedroom with excellent ceiling height, eaves storage, and views over the surrounding area. The property beautifully combines character features like exposed brickwork and fireplaces with modern touches, including a sleek kitchen and contemporary bathroom.

Good natural light, and an excellent location close to Kew Gardens, Kew Village, and Richmond, with easy access to local schools, shops, and transport links.

Tenure: Freehold

Service Charge: £0

Ground Rent: £0

Local Authority: Richmond upon Thames

Council Tax Band: E

Score	Energy rating	Current	Potential
92+	A		
81-91	B		
69-80	C		
55-68	D	60 D	
39-54	E		
21-38	F		
1-20	G		

Chestertons Kew Sales

1 Royal Parade

Kew

Richmond

TW9 3QD

kew@chestertons.co.uk

020 8104 0340

chestertons.co.uk

Sandycombe Road, TW9

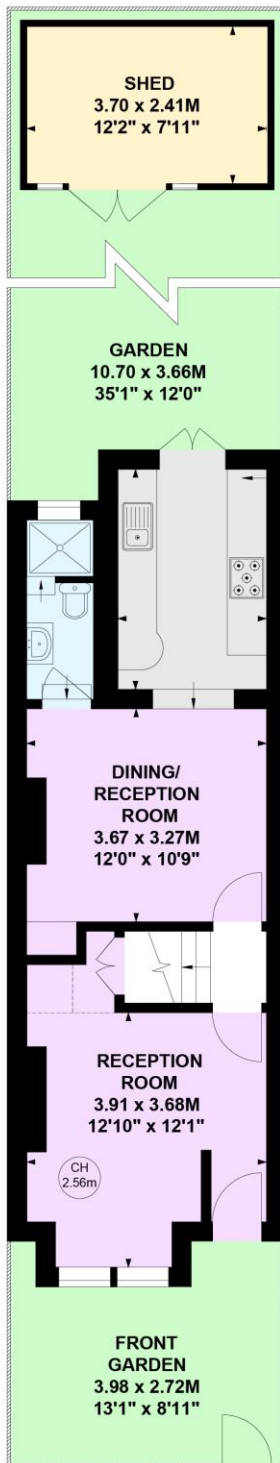
Approximate gross internal area

110.07 sq m / 1185 sq ft
(Including Shed & Excluding Eaves Storage)

Shed

8.91 sq m / 96 sq ft

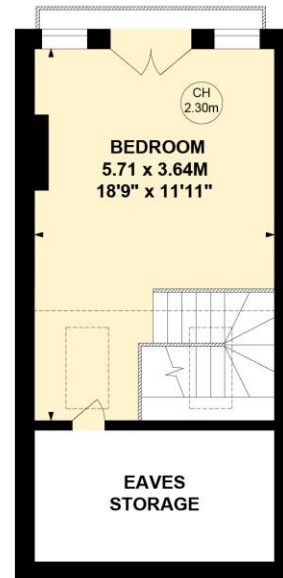
Key :
CH - Ceiling Height



Ground Floor



First Floor



Second Floor

Not to scale, for guidance only and must not be relied upon as a statement of fact.

All measurements and areas are approximate only

