



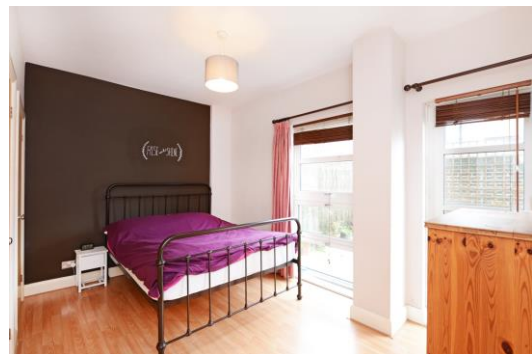
# Rivers House

Aitman Drive, TW8

Asking Price £425,000

Rarely available circa 743 sq. ft apartment with unrivalled, panoramic views of London.

**CHESTERTONS**



# Rivers House

Aitman Drive, TW8

- Two Bedroom
- One Reception
- One Bathroom
- Flat/Apartment
- Concierge
- Resident's Gymnasium
- Allocated Parking Space
- Leasehold





Rarely available circa 721 sq. ft apartment with unrivalled, panoramic views of London.

Concierge, residents gymnasium and 1 allocated parking space.

Rivers House is located moments from Kew Bridge Mainline station with direct links to Waterloo and is well positioned for access to the A4/M4 motorways for those needing access to Heathrow.

**Tenure:** Leasehold

**Service Charge:** £3,862.14 taken half yearly £1,931.07

**Ground Rent:** £612.44 taken half yearly £306.22

**Local Authority:** London Borough of Hounslow

**Council Tax Band:** F

Score	Energy rating	Current	Potential
92+	A		
81-91	B		
69-80	C	74 C	79 C
55-68	D		
39-54	E		
21-38	F		
1-20	G		

### *Chestertons Kew Sales*

1 Royal Parade

Kew

Richmond

TW9 3QD

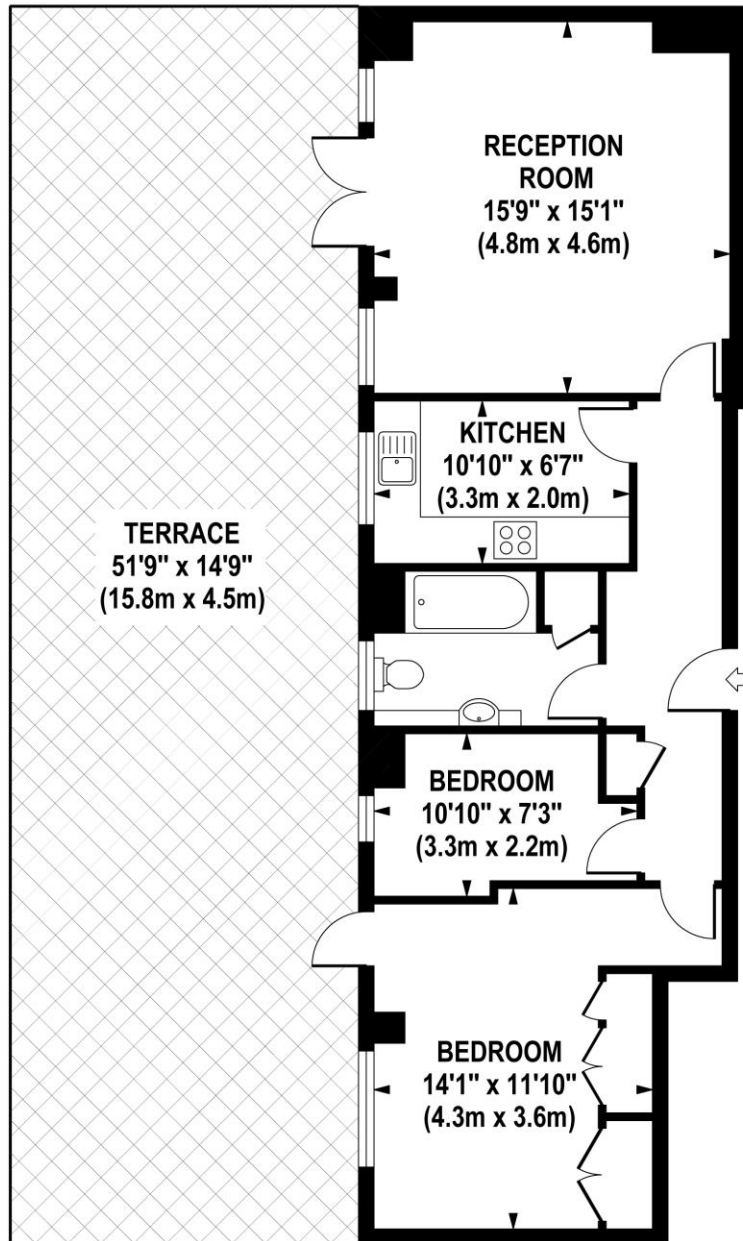
kew@chestertons.co.uk

020 8104 0340

chestertons.co.uk

## RIVERS HOUSE

Approximate Gross Internal Area 721 sq ft / 67.0 sq m



**GROUND FLOOR  
GROSS INTERNAL  
FLOOR AREA 721 SQ FT**

Although every attempt has been made to ensure accuracy, all measurements are approximate.  
The floor plan's for illustrative purposes only and not to scale. Measured in accordance to RICS standards.  
DE-PHOTOGRAPHY.NET

