



Temple Road

Richmond, TW9

Asking Price £540,000

A well-presented ground floor flat with a conservatory and fabulous garden and situated in a popular street.

The property boasts two generous double bedrooms, bathroom, separate kitchen, living room and a large conservatory. The conservatory leads onto a lovely private West-facing garden, perfect for alfresco dining. The Maisonette benefits from its own private front door, as well as access via the rear garden.

The property is perfectly located within a short walk of the boutique shops, bars and restaurants of Kew Gardens Village and its District Line and Overground Station.



Temple Road

Richmond, TW9

- Ground Floor Flat
- End of Terrace
- Two Bedrooms
- Garden



Tenure: Leasehold
Service Charge: TBC
Ground Rent: TBC
Local Authority: Richmond upon Thames
Council Tax Band: D

Chestertons Kew Sales

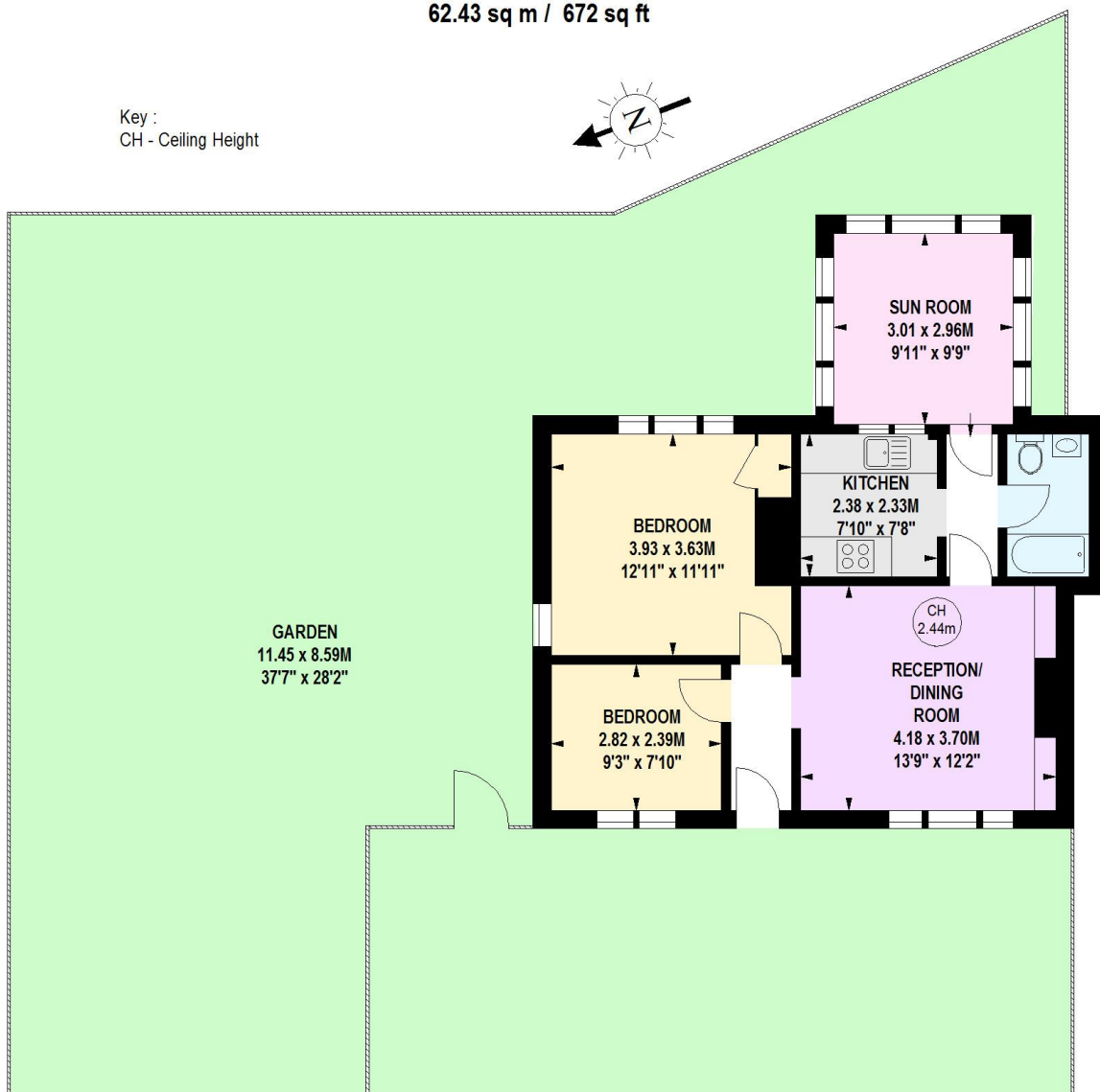
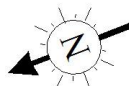
1 Royal Parade
Kew
Richmond
TW9 3QD
kew@chestertons.co.uk
020 8104 0340
chestertons.co.uk

Temple Road, TW9

Approximate gross internal area

62.43 sq m / 672 sq ft

Key :
CH - Ceiling Height



Ground Floor

This floor plan is a representation for guidance purposes only, not for valuation.
Any figure is approximate and must not be relied on as a statement of fact.
Copyright of Wyatt Dixon Homes

