



Pagoda Avenue

Richmond, TW9

Asking Price £1,900,000

A beautiful family house located in a popular residential road. The house has been finished to an excellent standard inside with ample storage space.



Pagoda Avenue

Richmond, TW9

- • Spacious family home
- • Five bedrooms
- • Quiet location
- • Driveway parking
- • Two reception rooms
- • Three bathrooms



A beautiful family house located in a popular residential road. The house has been finished to an excellent standard inside with ample storage space.

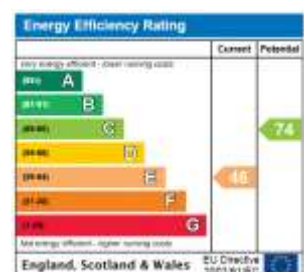
Accommodation briefly comprises; to the ground floor, a double reception room with wood flooring, spacious kitchen / dining / family room with modern units and opens out onto the private rear garden, separate utility room and guest WC; to the first floor, there is the master bedroom with built in wardrobes and en suite, a further two bedrooms with built-in wardrobes and family bathroom; to the second floor, there is a further two bedrooms and bathroom.

The property further benefits from off-street parking. Pagoda Avenue is conveniently located between Kew and Richmond and so provides excellent transport links as well as an array of boutique shops and cafes in Kew Gardens, which is also the home of the Royal Botanic Gardens and high street shops, bars and restaurants in Richmond.

Tenure: Freehold

Local Authority: London Borough of Richmond upon Thames

Council Tax Band: G



Chestertons Kew Sales

1 Royal Parade

Kew

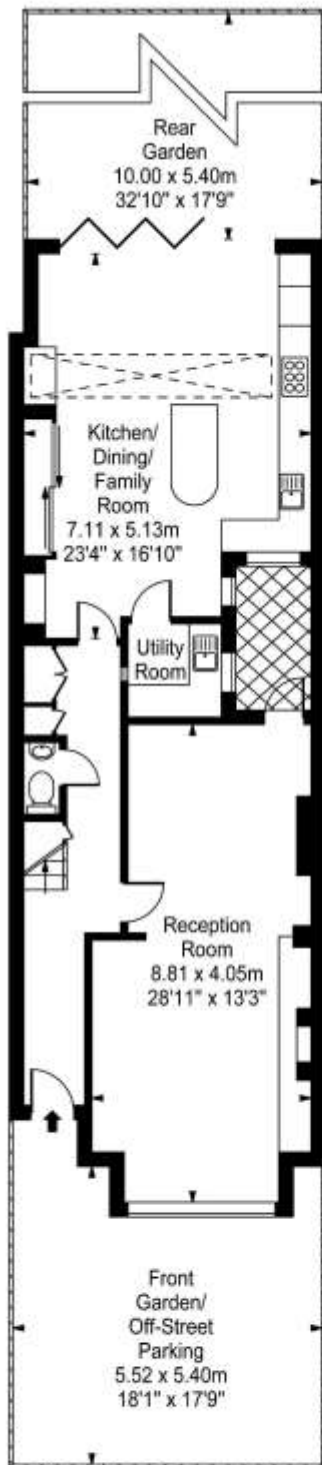
Richmond

TW9 3QD

kew@chestertons.co.uk

020 8104 0340

chestertons.co.uk



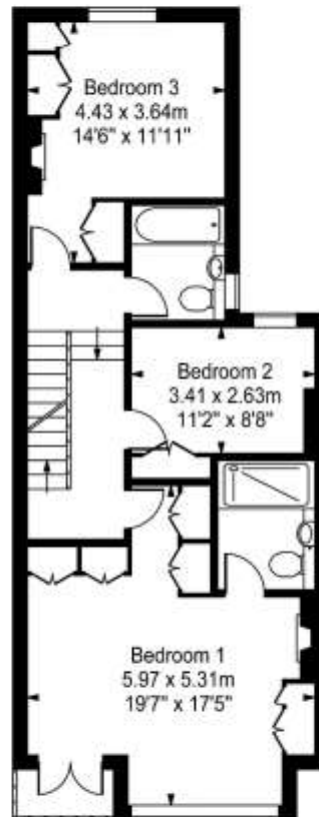
Ground Floor

Pagoda Avenue

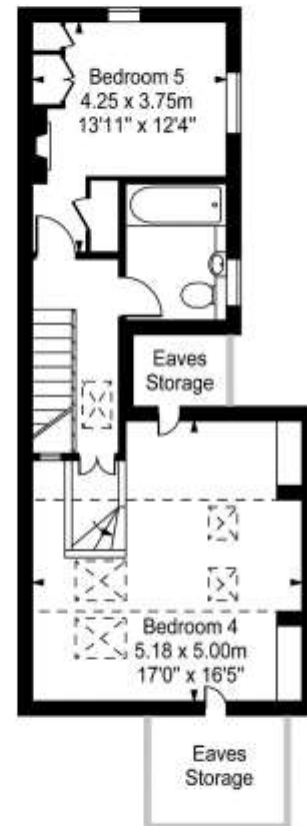
Approx. Gross Internal Area
207.51 Sq M - 2234 Sq Ft
(Including Eaves Storage)

Key:

----- = Reduced headroom below 1.5m / 5'0"



First Floor



Second Floor

Every attempt is made to assure accuracy, however measurements are approximate and for illustrative purposes only. Not to scale.
Floor plan by: www.frameworkphotos.co.uk

