



Jasmine House

16 Capital Interchange Way, TW8

OIEO £450,000

A beautifully presented 10th floor apartment with spectacular views from its private balcony in a fabulous new development, with private parking, a resident's gym, a cinema and concierge service.

CHESTERTONS



Jasmine House

16 Capital Interchange Way, TW8

- 10th Floor Apartment
- One Double Bedroom
- Balcony
- Fabulous Views over Brentford Stadium
- Concierge
- Residents Gym
- Private Parking



A beautifully presented 10th floor apartment with spectacular views from its private balcony in a fabulous new development with private parking, a long lease, a cinema, residents gym and looking directly down onto Brentford Stadium.

Kew Bridge and Gunnersbury Stations are both close and there are many green spaces within walking distance. There is also convenient access to the M4 and A4.

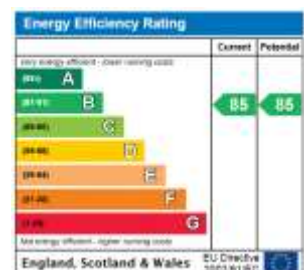
Tenure: Leasehold - 249 years from 20 August 2018

Service Charge: £2,800 per annum

Ground Rent: £0

Local Authority: London Borough of Hounslow

Council Tax Band: C



Chestertons Kew Sales

1 Royal Parade

Kew

Richmond

TW9 3QD

kew@chestertons.co.uk

020 8104 0340

chestertons.co.uk

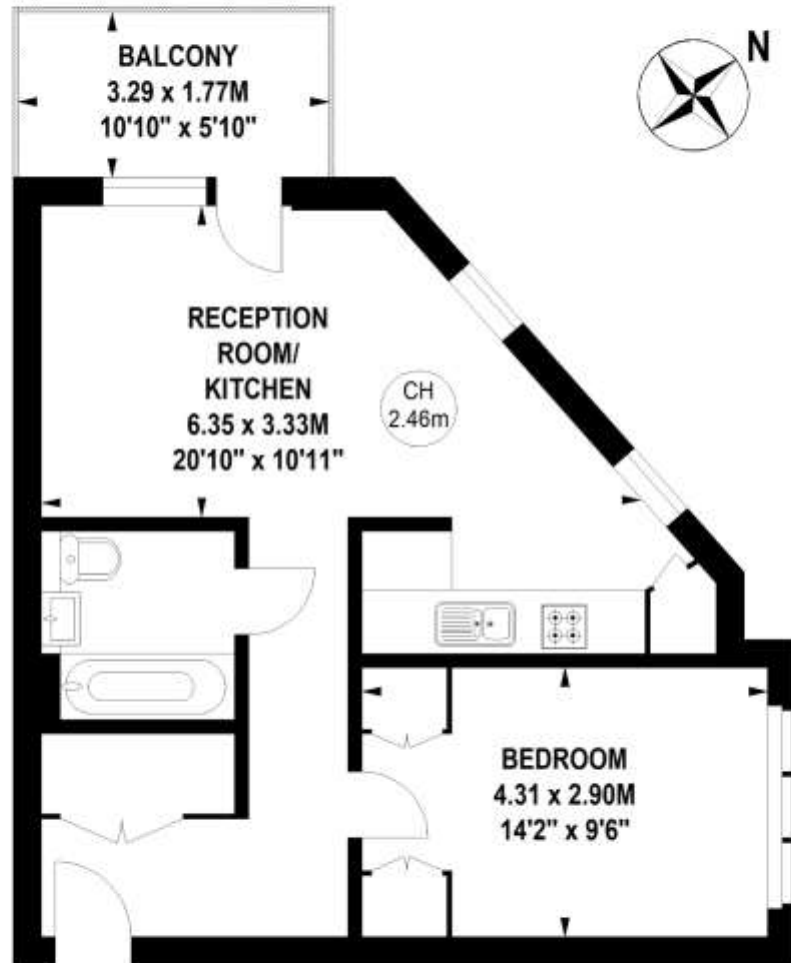
Jasmine House, Capital Interchange Way, TW8

Approximate gross internal area

49.89 sq m / 537 sq ft

Key :

CH - Ceiling Height



Tenth Floor

Not to scale, for guidance only and must not be relied upon as a statement of fact.

All measurements and areas are approximate only