



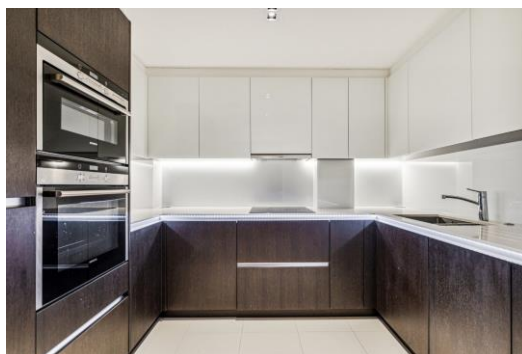
Rothschild House

8 Kew Bridge Road, TW8

Asking Price £820,000

Modern two double bedroom riverside apartment with secure parking.

CHESTERTONS



Rothschild House

8 Kew Bridge Road, TW8

- First floor apartment
- Two double bedrooms
- Two bathrooms
- South facing balcony
- Direct river views
- Secure underground parking
- 24 hour concierge
- Residents gym



This spacious apartment is set in Rothschild House which forms part of the vibrant Kew Bridge development positioned along the riverside. The property is a short walk from Kew Bridge National Rail station, which has direct services to Waterloo station in 30 minutes.

Comprising a bright open plan reception room with dining space, wood floors and floor-to-ceiling windows leading out to a private balcony with direct views over the River Thames. There is a separate fully fitted modern kitchen with integrated appliances including wine cooler, two double bedrooms both with fitted wardrobes, en-suite to the main, and a separate family bathroom. The property has also been fitted with a 'Sonos' system.

The development offers 24-hour concierge, residents' gym, communal gardens, and secure underground parking. The property's location along the river allows for a scenic outlook with nearby open spaces to explore. Brentford offers a selection of shops, restaurants, and cafes to explore, while the amenities of Kew Village are a short journey away.

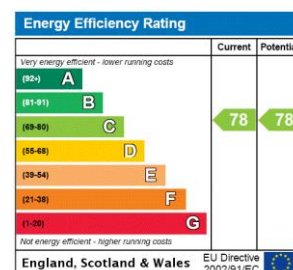
Tenure: 999 years from 1 June 2011

Service Charge: £7,000-£8,000 per annum includes garden and courtyard maintenance, concierge and communal services

Ground Rent: £300 per annum

Local Authority: London Borough of Hounslow

Council Tax Band: F



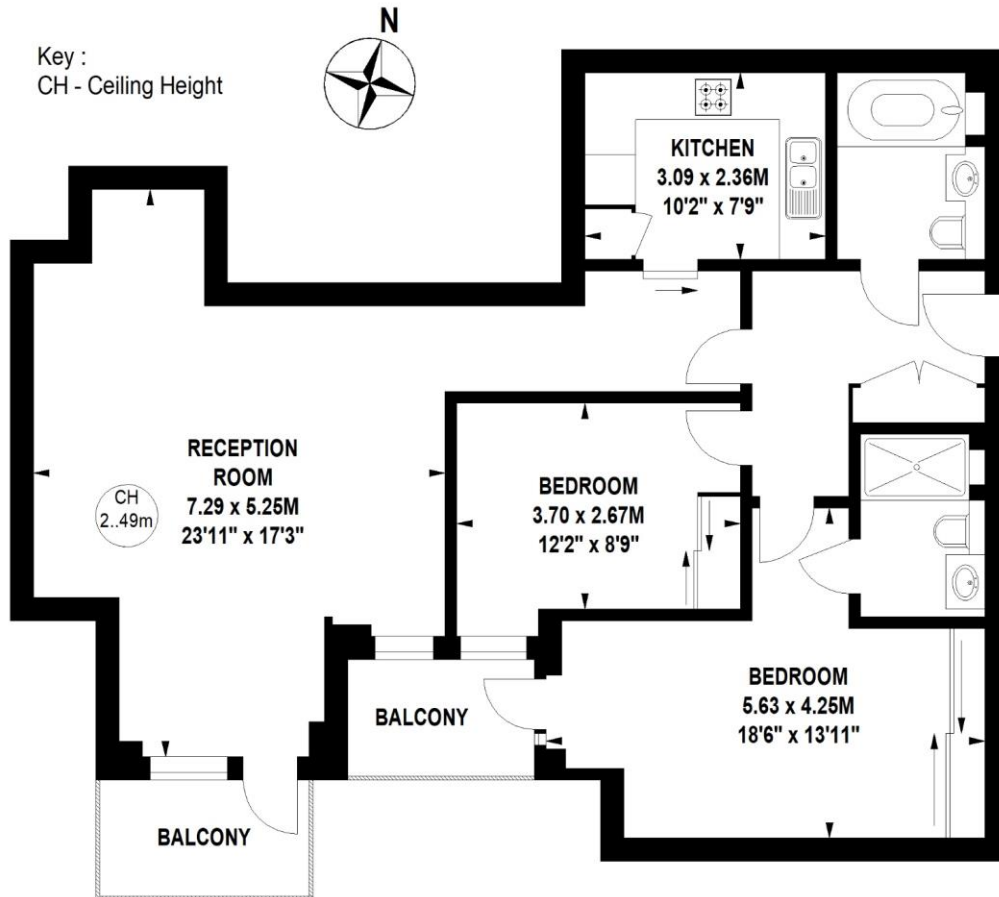
Chestertons Kew Sales

306 Sandycombe Road
Kew
Richmond Surrey
TW9 3NG
kew@chestertons.co.uk
020 8104 0340
chestertons.co.uk

Rothschild House, Kew Bridge Road, TW8

Approximate gross internal area

87.33 sq m / 940 sq ft



First Floor

Not to scale, for guidance only and must not be relied upon as a statement of fact.
All measurements and areas are approximate only

