



**19 Berw Road, Pontypridd, CF37 2AA**  
**£825 Per Calendar Month**

**\*\* Walk to Town, Bus & Train Stations \*\* Three Bedrooms \*\* Off Road Parking \*\* Well Presented \*\***  
Available from beginning of January 2026.

A well presented mid terraced house with off road parking for 2 vehicles and walking distance of amenities,  
Town, shops, doctors and transport links.

Comprising entrance hall, lounge, gloss kitchen with oven & hob, three bedrooms and modern first floor  
bathroom.

Viewing recommended.

Entrance Hall

Lounge



Kitchen

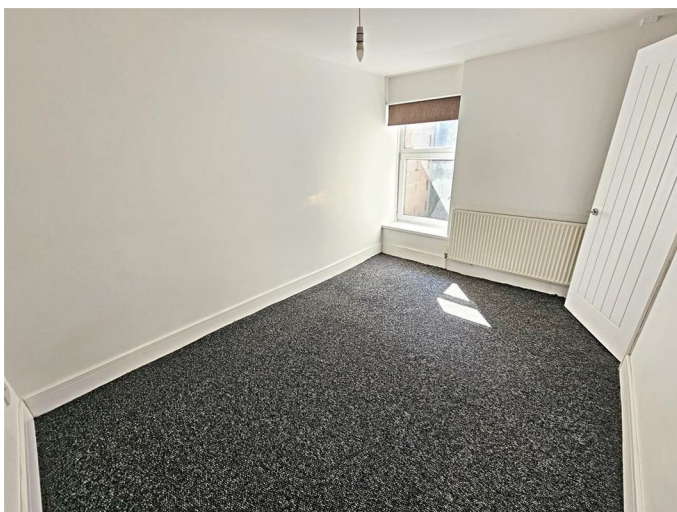


First Floor Landing

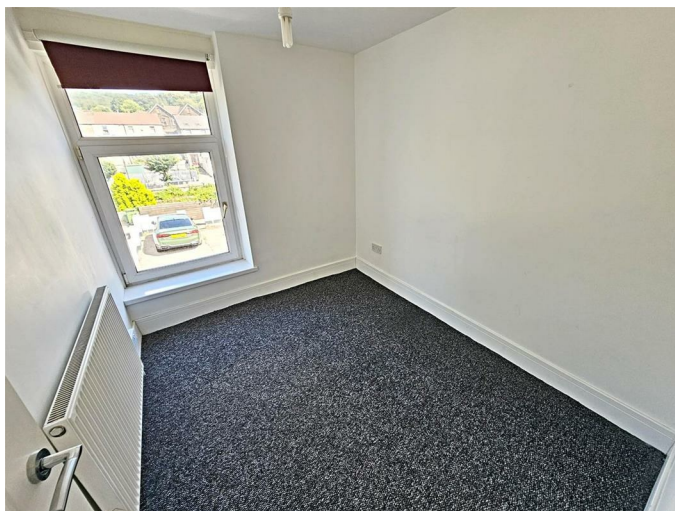
Bedroom 1



Bedroom 2



Bedroom 3



Bathroom/WC



Off Road Parking

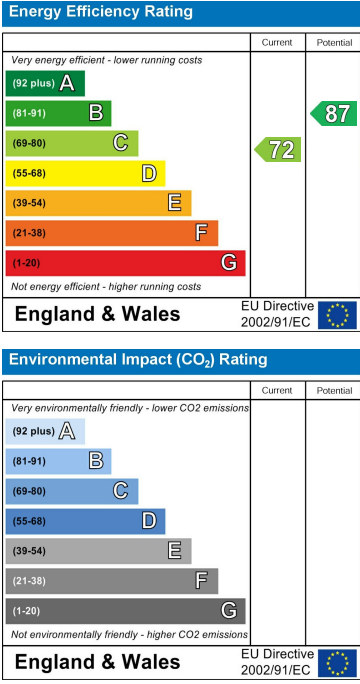


Floor Plan

Area Map



Energy Efficiency Graph



These particulars, whilst believed to be accurate are set out as a general outline only for guidance and do not constitute any part of an offer or contract. Intending purchasers should not rely on them as statements of representation of fact, but must satisfy themselves by inspection or otherwise as to their accuracy. No person in this firms employment has the authority to make or give any representation or warranty in respect of the property.