



**15 Paget Street, Pontypridd, CF37 3LF**  
**£775 Per Calendar Month**

Village Location - Close to Amenities \*\*

Viewing recommended on this well presented mid terraced house located in the popular village of Ynysybwl - walking distance of school, shops, doctors and many amenities.

Comprising entrance lobby, lounge/diner, modern kitchen with oven & hob, two bedrooms and refitted, first floor bathroom.

There is a paved, level garden together with double glazing and gas central heating.

Available immediately



## Entrance Lobby

Lounge/Diner 20'8" x 14'6" (6.32 x 4.43)



Kitchen 10'4" x 7'4" (3.15 x 2.26)

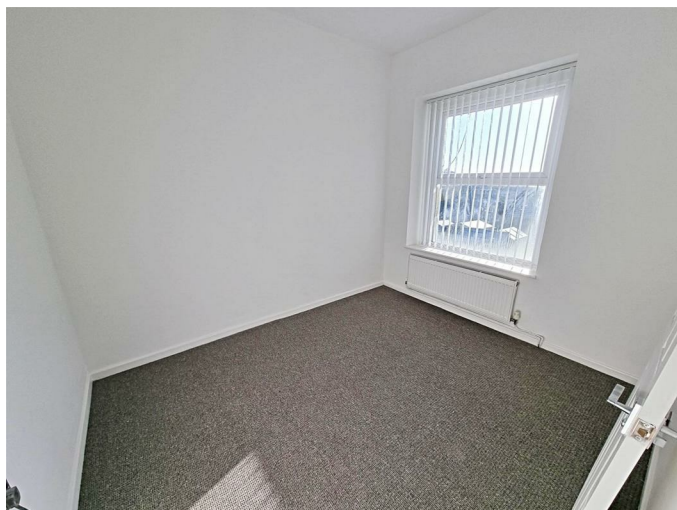


## First Floor

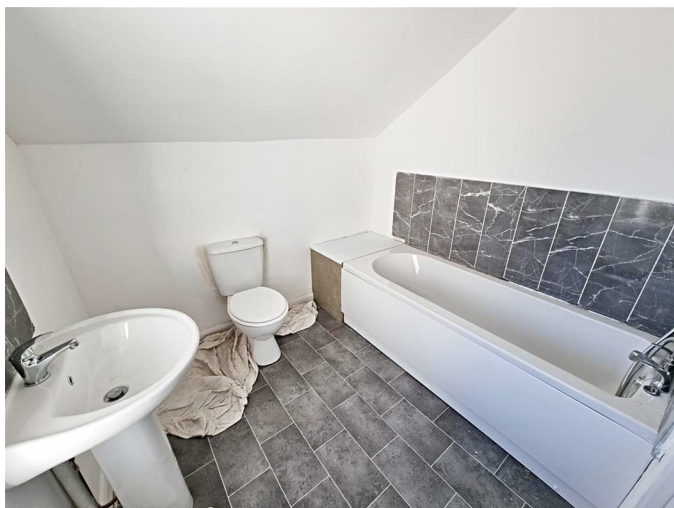
Bedroom 1 14'6" x 10'0" (4.44 x 3.05)



Bedroom 2 10'2" x 8'9" (3.11 x 2.68)



## Bathroom/WC

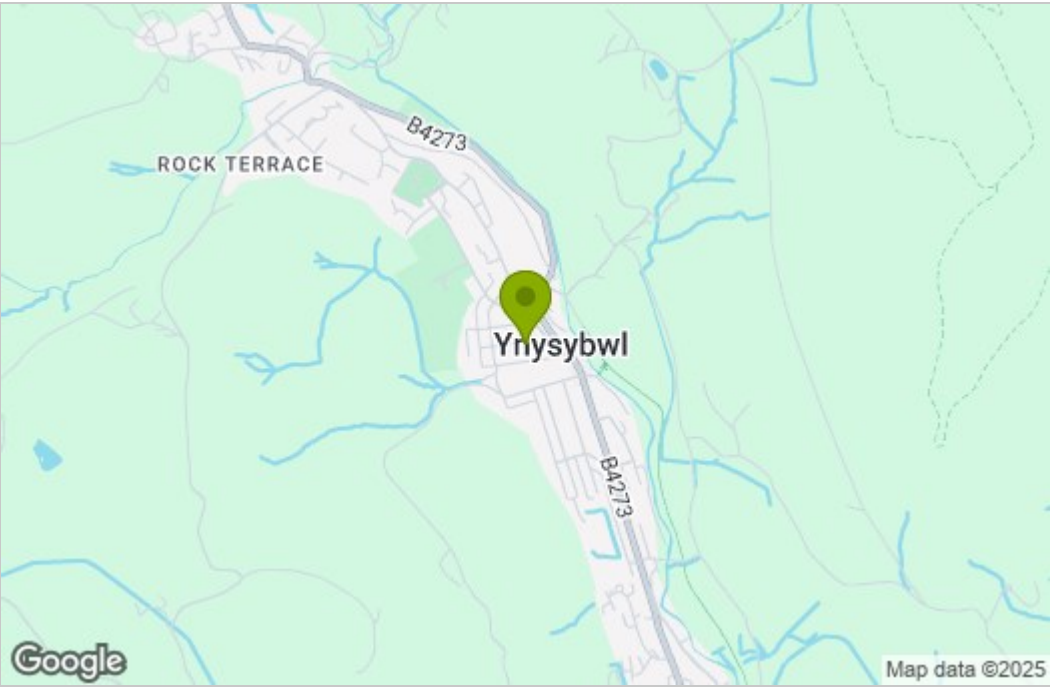


## Rear Garden

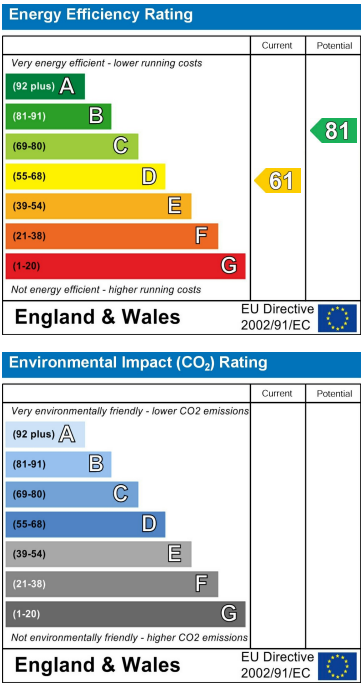


Floor Plan

Area Map



Energy Efficiency Graph



These particulars, whilst believed to be accurate are set out as a general outline only for guidance and do not constitute any part of an offer or contract. Intending purchasers should not rely on them as statements of representation of fact, but must satisfy themselves by inspection or otherwise as to their accuracy. No person in this firms employment has the authority to make or give any representation or warranty in respect of the property.