



**8 Cwrt Y Garth, Pontypridd, CF38 2JH**  
**£825 Per Calendar Month**

**\*\* Available Now \*\* Refurbished to a High Standard \*\* Newly Fitted Kitchen \*\***

Viewing recommended to this lovely end link house located on the popular Manor Chase development.

Minutes from local shops, schools and main roads.

Comprising entrance hall, newly fitted kitchen with oven & hob, lounge with french doors leading to garden, two bedrooms and modern first floor bathroom.

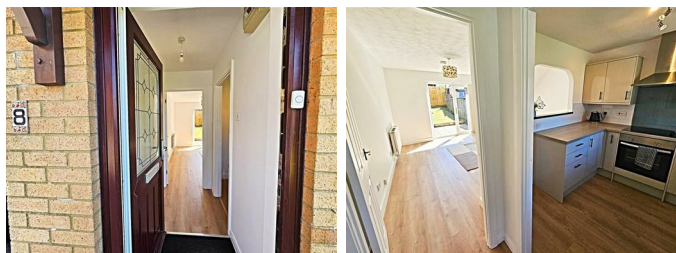
There are gardens to the front and rear as well as off road parking for two vehicles to the side.

Freshly decorated throughout and new flooring to the ground floor.

Highly recommended.



Entrance Hall



Kitchen 8'4" x 7'9" (2.56 x 2.38)

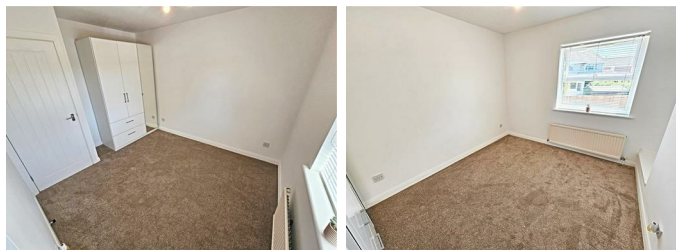


Lounge 12'9" x 12'4" (3.91 x 3.77)

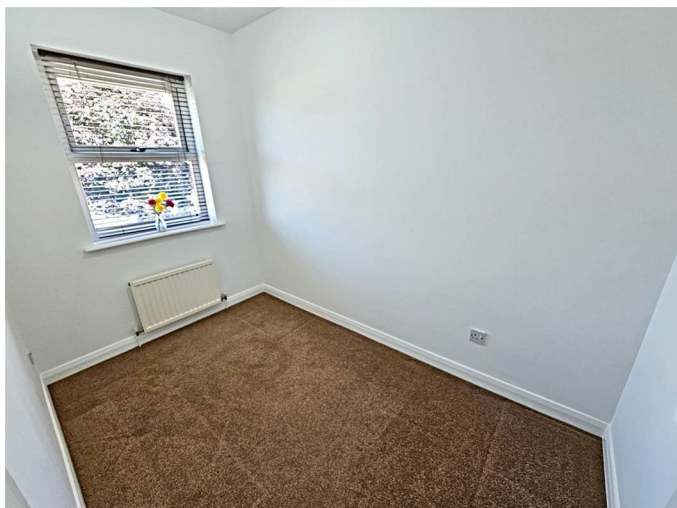


First Floor Landing

Bedroom 1 11'1" x 8'11" (3.39 x 2.72)



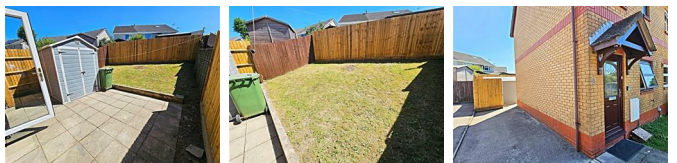
Bedroom 2 9'5" x 5'9" (2.88 x 1.76)



Bathroom

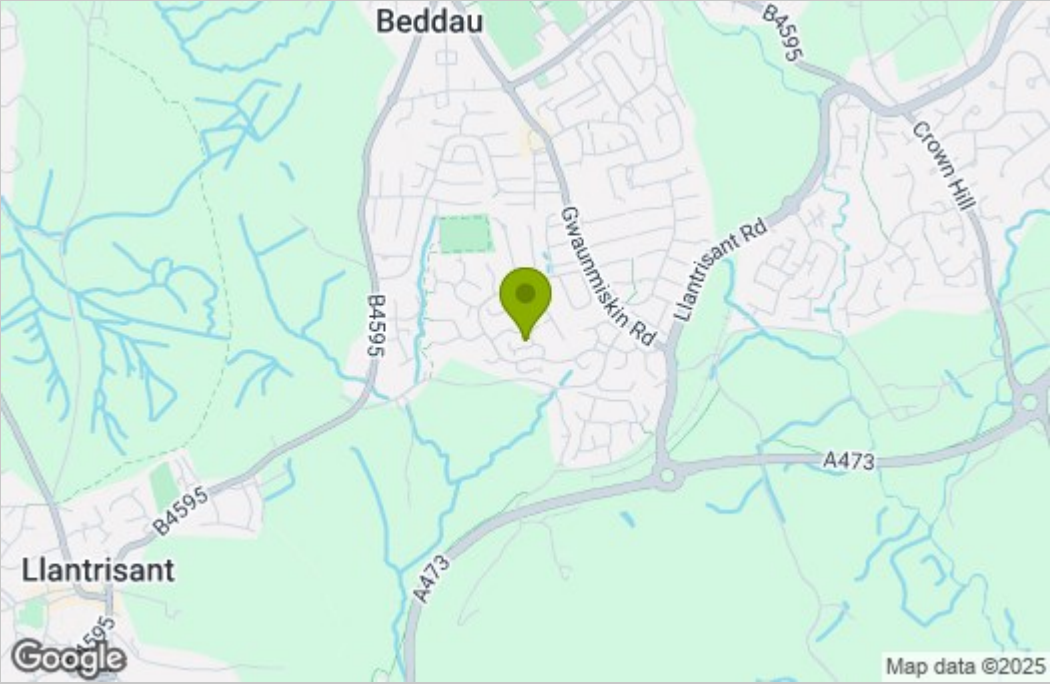


Gardens & Parking

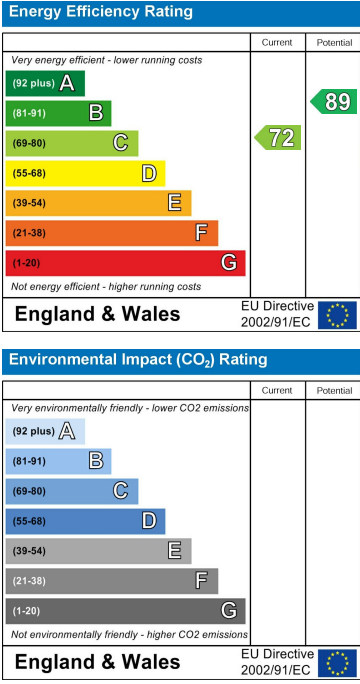


Floor Plan

Area Map



Energy Efficiency Graph



These particulars, whilst believed to be accurate are set out as a general outline only for guidance and do not constitute any part of an offer or contract. Intending purchasers should not rely on them as statements of representation of fact, but must satisfy themselves by inspection or otherwise as to their accuracy. No person in this firms employment has the authority to make or give any representation or warranty in respect of the property.