



## 79 Merthyr Road, Pontypridd, CF37 4DD

**£255,000**

Located on Merthyr Road in the charming town of Pontypridd, this delightful end terrace house presents an ideal family home. Boasting four spacious bedrooms, this property offers ample room for both relaxation and privacy. The open plan living and kitchen area creates a warm and inviting atmosphere, perfect for family gatherings and entertaining guests.

The house features well-appointed reception rooms, providing additional space for leisure or formal dining. With three bathrooms, morning routines will be a breeze, ensuring convenience for the entire family.

One of the standout features of this property is the good-sized garden, which includes a garden room that can serve as a home office or a tranquil retreat. This versatile space allows for a seamless blend of work and leisure, catering to the needs of modern living.

Situated close to the town centre, residents will enjoy easy access to local amenities, shops, and services. Additionally, nearby parks offer opportunities for outdoor activities and family outings.

This lovely family home combines comfort, space, and a prime location, making it an excellent choice for those seeking a vibrant community in which to settle. Don't miss the chance to make this charming property your own.



## Ground Floor

### Entrance Lobby

Double glazed entrance door, tiled floor, staircase to first floor.

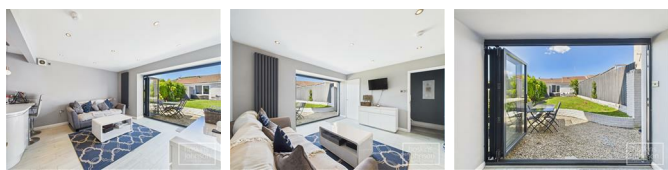
Lounge 24'1" x 13'2" (7.36 x 4.02)



Excellent size lounge with double glazed windows to front and rear, two radiators, coved ceiling, wood flooring, attractive feature fireplace.

### Lower Ground Floor

#### Living Room



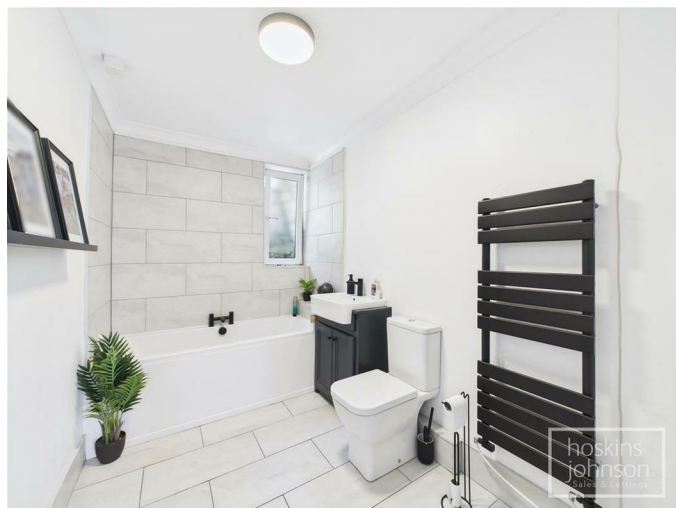
Double glazed bi fold doors leading out to the rear garden, modern vertical radiator, ceiling spotlights, laminated wood flooring, understairs storage with gas combination boiler, open plan to kitchen.

#### Kitchen



Contemporary kitchen with a range of gloss base and wall cupboards with contrasting work tops and up stands, sink unit, gas hob and electric double oven with extractor hood above, integral fridge, freezer, washing machine and wine cooler, breakfast bar, modern vertical radiator, ceiling spotlights, double glazed window to front.

## Bathroom



Modern three piece suite in white comprising double ended bath with tiled surrounds, wc, wash hand basin, heated towel rail, coved ceiling, tiled floor, storage cupboard.

### First Floor Landing

Storage cupboard, staircase to second floor.

Bedroom 2 11'0" x 10'6" (3.37 x 3.21)



Double glazed window to front, radiator, coved ceiling, built in wardrobes.

Bedroom 3 10'9" x 10'5" (3.28 x 3.19)



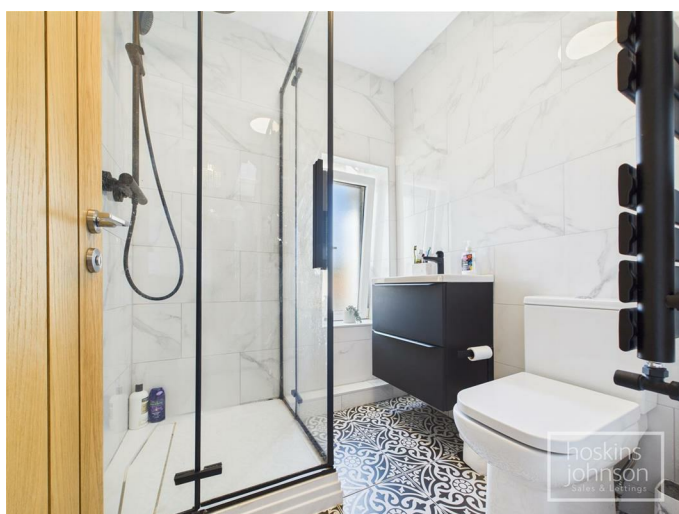
Double glazed window to rear, radiator, coved ceiling.

Bedroom 4 8'11" x 5'10" (2.74 x 1.79)



Double glazed window to front, radiator, coved ceiling.

Shower Room



Three piece suite in white with modern fittings and comprising tiled shower cubicle with 'rainfall' shower

head and separate hand held attachment, wc, wash hand basin, tiled walls, heated towel rail, double glazed window to rear.

Second Floor

Master Bedroom 19'3" x 10'1" (5.87 x 3.08)



Double glazed picture windows to rear with superb views over the surrounding area, two skylights to front, modern vertical radiator, built in storage cupboard.

En-Suite Shower Room



Large walk in shower with 'rainfall' shower head and separate hand held shower attachment, wc, wash hand basin, heated towel rail, tiled floor, ceiling spotlights, double glazed window to rear.

Outside



Gravelled front garden.

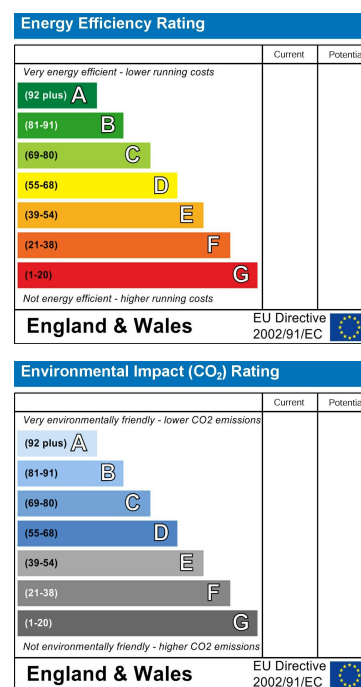
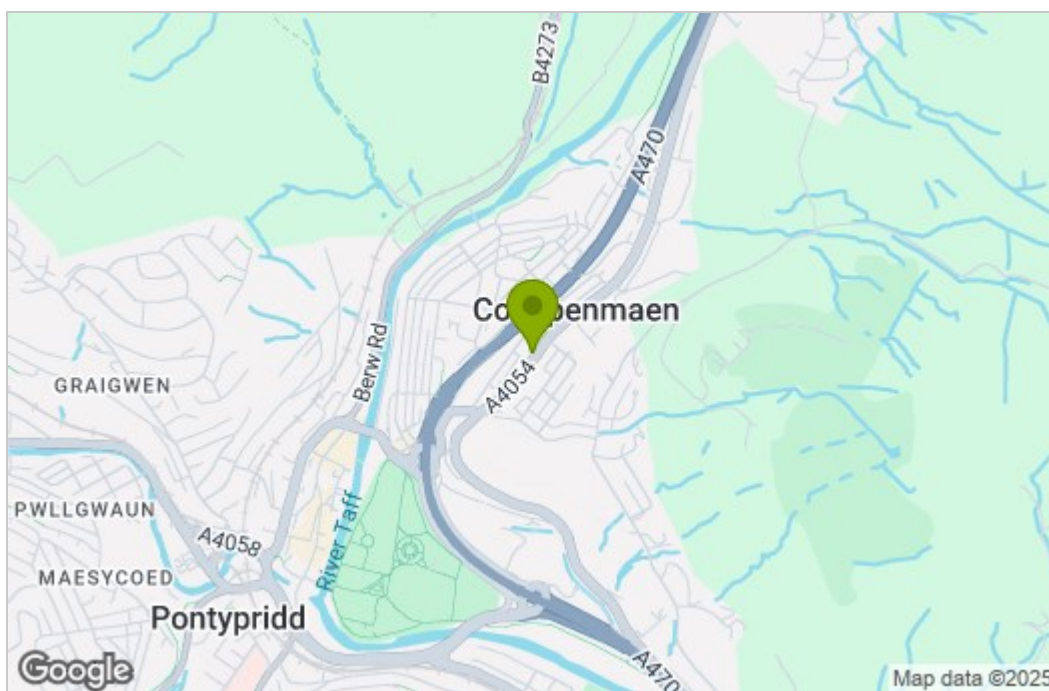
Good size, level rear garden with gravelled area, lawn, decked seating area, garden room/home office (5.21 x 2.85m) and storage area.



## Floor Plan



## Area Map



These particulars, whilst believed to be accurate are set out as a general outline only for guidance and do not constitute any part of an offer or contract. Intending purchasers should not rely on them as statements of representation of fact, but must satisfy themselves by inspection or otherwise as to their accuracy. No person in this firm's employment has the authority to make or give any representation or warranty in respect of the property.

22 Market Street, Pontypridd, CF37 2ST  
Tel: 01443 404093 Email: [pontypridd@hoskinsjohnson.co.uk](mailto:pontypridd@hoskinsjohnson.co.uk) [www.hoskinsjohnson.co.uk](http://www.hoskinsjohnson.co.uk)