



8a Ceridwen Terrace, Pontypridd, CF37 4PD

£575 Per Calendar Month

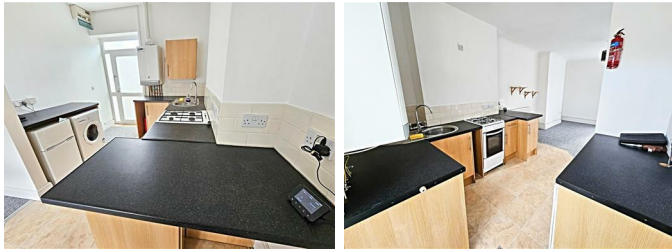
**** Available Now ** Well Presented First Floor Apartment ** Walk to Town & Park ****

Move straight into this lovely first floor apartment, located minutes from many amenities including Town Centre with its many shops, cafes and bars, Park with the Lido swimming pool, bus/train stations and main roads. Comprising open plan living/kitchen with oven, hob, washing machine & fridge/freezer, bathroom and bedroom.

Available now.

Recommended.

Kitchen 9'4" x 8'7" (2.87 x 2.64)



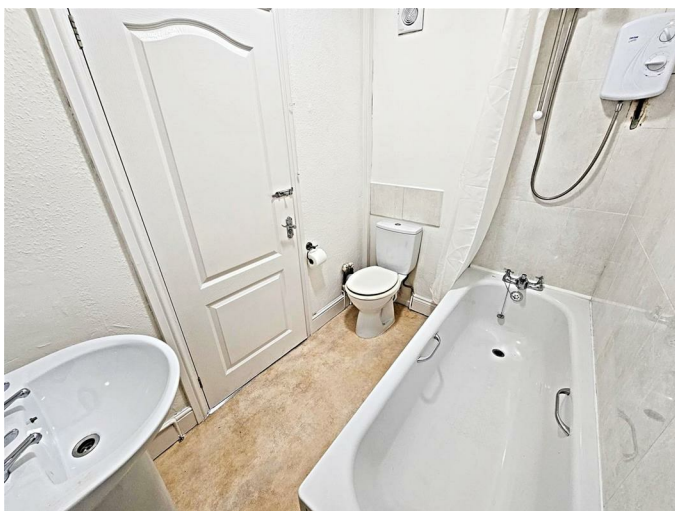
Open plan lounge 13'1" x 12'7" (4.00 x 3.86)



Bedroom 9'11" x 7'8" (3.04 x 2.35)

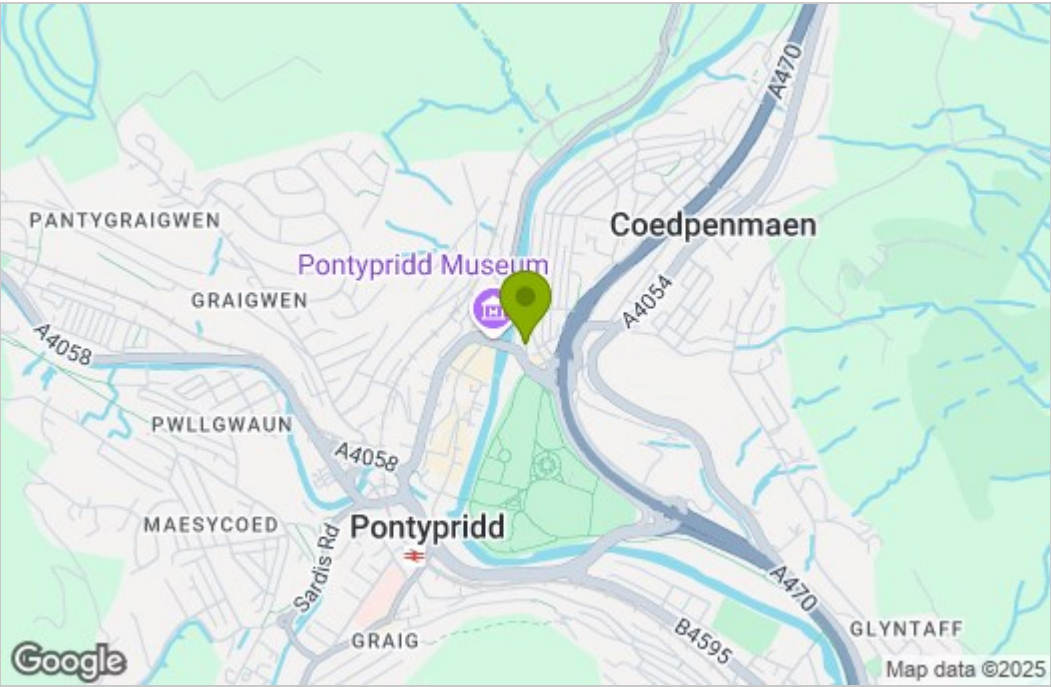


Bathroom

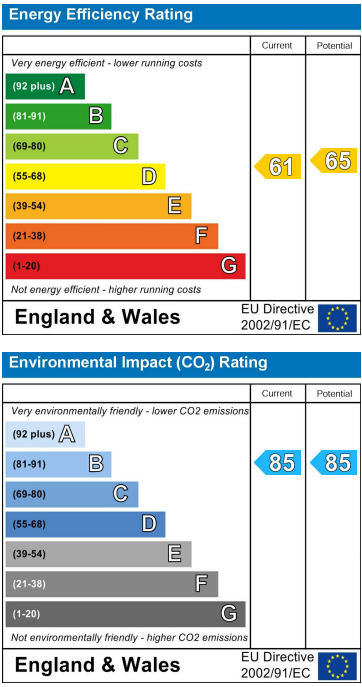


Floor Plan

Area Map



Energy Efficiency Graph



These particulars, whilst believed to be accurate are set out as a general outline only for guidance and do not constitute any part of an offer or contract. Intending purchasers should not rely on them as statements of representation of fact, but must satisfy themselves by inspection or otherwise as to their accuracy. No person in this firms employment has the authority to make or give any representation or warranty in respect of the property.